

WAAS CH 50518 W32A	APP CRS 319°	Rwy Idg 10000 TDZE 442 Apt Elev 459
--	------------------------	--

RNAV (GPS) RWY 32R

SCOTT AFB/MIDAMERICA ST LOUIS (BLV)

RNP APCH - GPS.



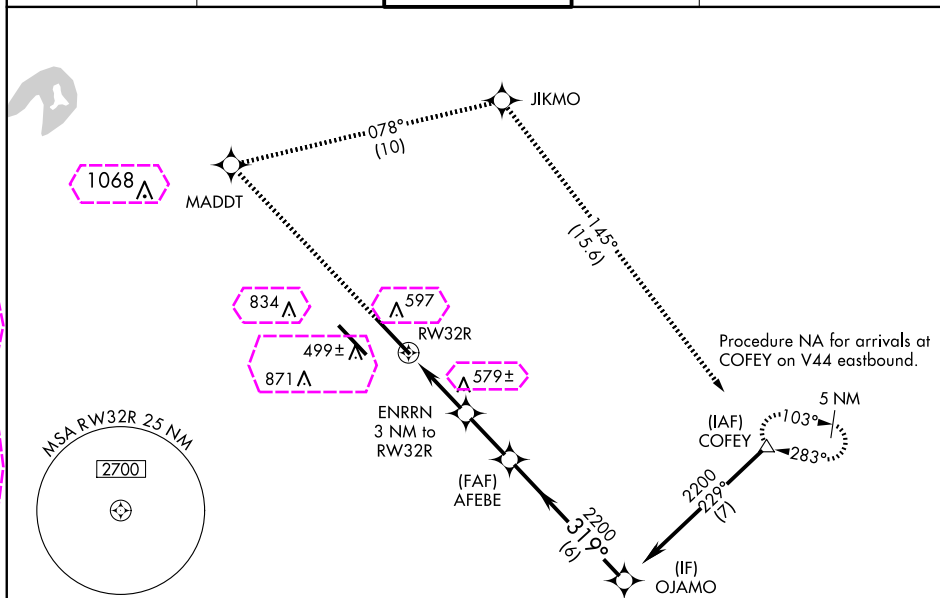
For uncompensated Baro-VNAV systems,
procedure NA below -18°C or above 54°C.
For inop ALS, increase LNAV/VNAV all Cats visibility to RVR 5500.

MALSR



MISSED APPROACH: Climb to 2300 direct MADDT and right turn on track 078° to JIKMO and on track 145° to COFEY and hold.

ATIS ★ 128.7 256.7	ST LOUIS APP CON 125.2 281.5	SCOTT TOWER 128.25 253.5	GND CON 119.2 275.8	CLNC DEL 119.875 263.025
-----------------------	---------------------------------	-----------------------------	------------------------	-----------------------------



ELEV 459	D	TDZE 442	<div><div><div>2300</div><div>↑</div></div><div><div>MADDT</div><div>☀</div></div><div><div>tr 078°</div><div>↷</div></div><div><div>JIKMO</div><div>☀</div></div><div><div>tr 145°</div><div>↷</div></div><div><div>COFEY</div><div>△</div></div></div>																										
<div></div>			<div><div>VGSI and RNAV glidepath not coincident (VGSI Angle 3.00/TCH 71).</div><div><div>AFEBE 2200</div><div>OJAMO</div><div>319° 2200</div><div>2200</div><div>1460</div><div>ENRRN 3 NM to RW32R</div><div>1 NM to RW32R</div><div>1 NM</div><div>2 NM</div><div>2.3 NM</div><div>6 NM</div><div>GP 3.00° TCH 55</div></div></div>																										
			<table><tr><th>CATEGORY</th><th>A</th><th>B</th><th>C</th><th>D</th></tr><tr><td>LPV DA</td><td colspan="4">642/24 200 (200-½)</td></tr><tr><td>LNAV/VNAV DA</td><td colspan="4">804/35 362 (400-¾)</td></tr><tr><td>LNAV MDA</td><td colspan="2">840/24 398 (400-½)</td><td colspan="2">840/35 398 (400-¾)</td></tr><tr><td><div> CIRCLING</div></td><td>1000-1 541 (600-1)</td><td>1120-1 661 (700-1)</td><td>1240-2¼ 781 (800-2¼)</td><td>1240-2½ 781 (800-2½)</td></tr></table>					CATEGORY	A	B	C	D	LPV DA	642/24 200 (200-½)				LNAV/VNAV DA	804/35 362 (400-¾)				LNAV MDA	840/24 398 (400-½)		840/35 398 (400-¾)		<div> CIRCLING</div>	1000-1 541 (600-1)
CATEGORY	A	B	C	D																									
LPV DA	642/24 200 (200-½)																												
LNAV/VNAV DA	804/35 362 (400-¾)																												
LNAV MDA	840/24 398 (400-½)		840/35 398 (400-¾)																										
<div> CIRCLING</div>	1000-1 541 (600-1)	1120-1 661 (700-1)	1240-2¼ 781 (800-2¼)	1240-2½ 781 (800-2½)																									
REIL Rwy 14L HIRL Rwy 14R-32L and 14L-32R																													

BELLEVILLE, ILLINOIS

Orig-F 08SEP22

SCOTT AFB/MIDAMERICA ST LOUIS (BLV)

38°33'N-89°50'W

RNAV (GPS) RWY 32R

BELLEVILLE, ILLINOIS

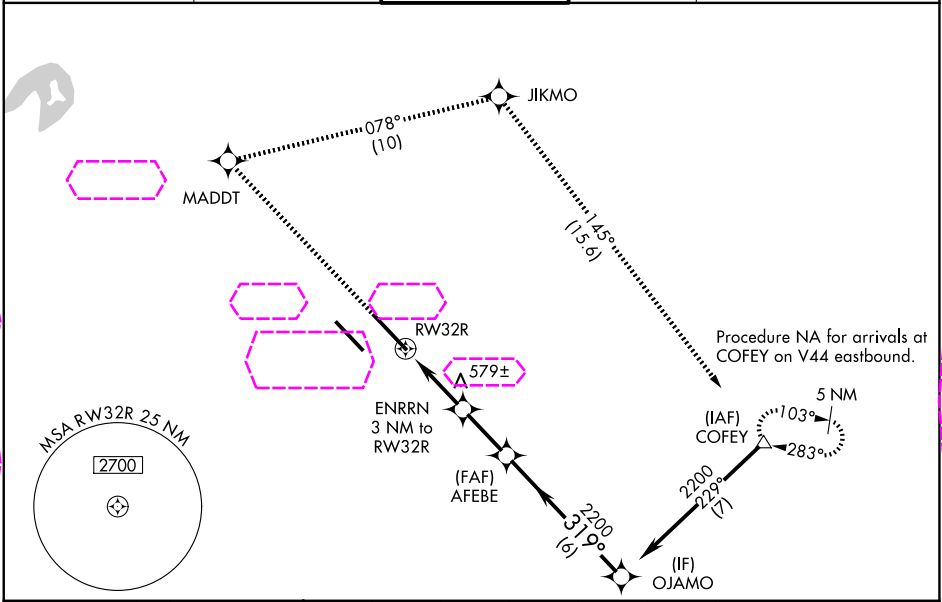
AL-46 (FAA)

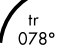
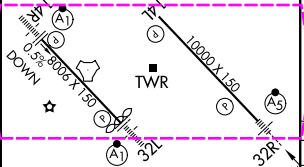
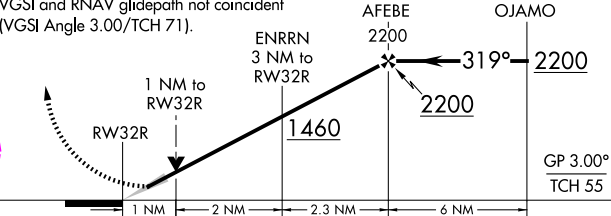
25219

WAAS CH 50518 W32A	APP CRS 319°	Rwy Ldg 10000 TDZE 442 Apt Elev 459
--	------------------------	--

RNAV (GPS) RWY 32R
SCOTT AFB/MIDAMERICA ST LOUIS (BLV)

RNP APCH - GPS.		MALSR	MISSED APPROACH: Climb to 2300 direct MADDT and right turn on track 078° to JIKMO and on track 145° to COFEY and hold.	
⚠ ASR For uncompensated Baro-VNAV systems, procedure NA below -18°C or above 54°C. For inop ALS, increase LNAV/VNAV all Cats visibility to RVR 5500.		AS		
ATIS ★ 128.7 256.7	ST LOUIS APP CON 125.2 281.5	SCOTT TOWER 128.25 253.5	GND CON 119.2 275.8	CLNC DEL 119.875 263.025



ELEV 459	D	TDZE 442						
			↑	✧	 tr 078°	✧	tr 145°	△
			VGSI and RNAV glidepath not coincident (VGSI Angle 3.00/TCH 71).					
								
			GP 3.00° TCH 55					
			CATEGORY	A	B	C	D	
			LPV DA	642/24 200 (200-½)				
			LNAV/VNAV DA	804/35 362 (400-⅝)				
			LNAV MDA	840/24 398 (400-½)		840/35 398 (400-⅝)		
			CIRCLING	1000-1 541 (600-1)	1120-1 661 (700-1)	1240-2¼ 781 (800-2¼)	1240-2½ 781 (800-2½)	
REIL Rwy 14L HIRL Rwys 14R-32L and 14L-32R								