

BELLEVILLE, ILLINOIS

AL-46 (FAA)

23334

APP CRS 319°	Rwy Idg 7822
TDZE 439	
Apt Elev 459	

RNAV (GPS) RWY 32L

SCOTT AFB/MIDAMERICA ST LOUIS (BLV)

RNP APCH-GPS.

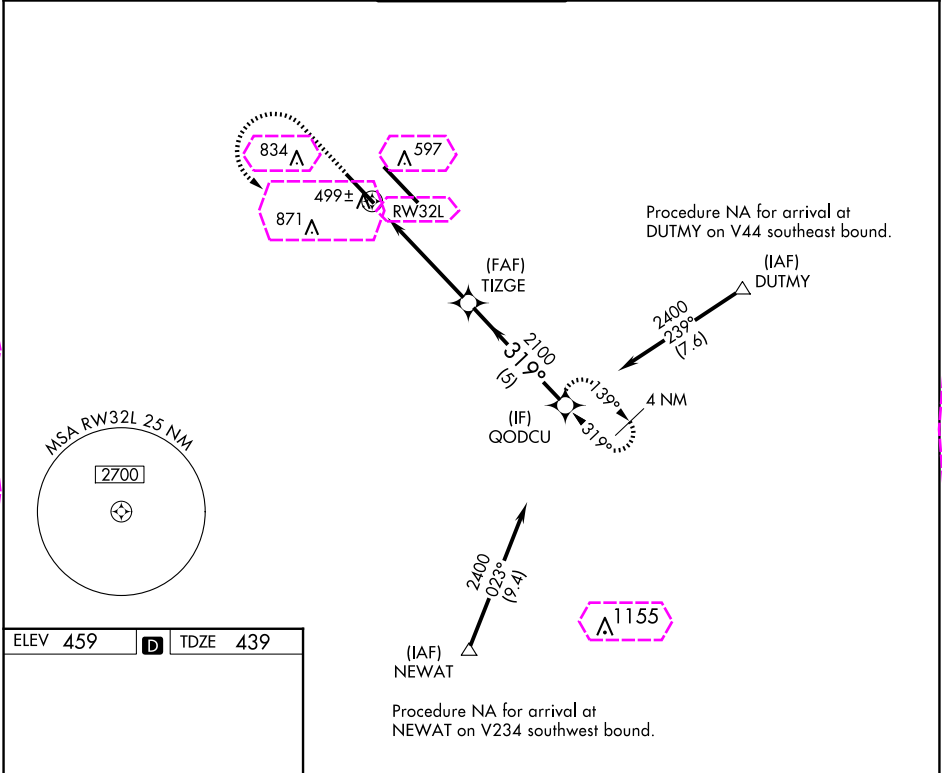
▼
▲
ASR

For inop ALS, increase LNAV Cat C/D visibility to 1 3/8 mile.

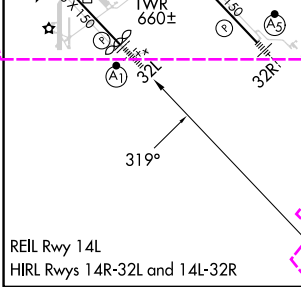
ALSF-1
▲
1

MISSED APPROACH: Climb to 1500 then climbing left turn to 2400 direct QODCU and hold.

ATIS ★ 128.7 256.7	ST LOUIS APP CON 125.2 281.5	SCOTT TOWER 128.25 253.5	GND CON 119.2 275.8	CLNC DEL 119.875 263.025
-----------------------	---------------------------------	-----------------------------	------------------------	-----------------------------



ELEV 459	D	TDZE 439
----------	---	----------



1500	2400	QODCU	VGSI and descent angles not coincident (VGSI Angle 3.00/TCH 50).	
↑	↷	✦		
CATEGORY	A	B	C	D
LNAV MDA	920/24	481 (500-½)	920/50	481 (500-1)
CIRCLING	1000-1 541 (600-1)	1120-1 661 (700-1)	1240-2¼ 781 (800-2¼)	1240-2½ 781 (800-2½)

BELLEVILLE, ILLINOIS

AL-46 (FAA)

25219

APP CRS 319°	Rwy Ldg 7822
TDZE 439	
Apt Elev 459	

RNAV (GPS) RWY 32L

SCOTT AFB/MIDAMERICA ST LOUIS (BLV)

RNP APCH-GPS.

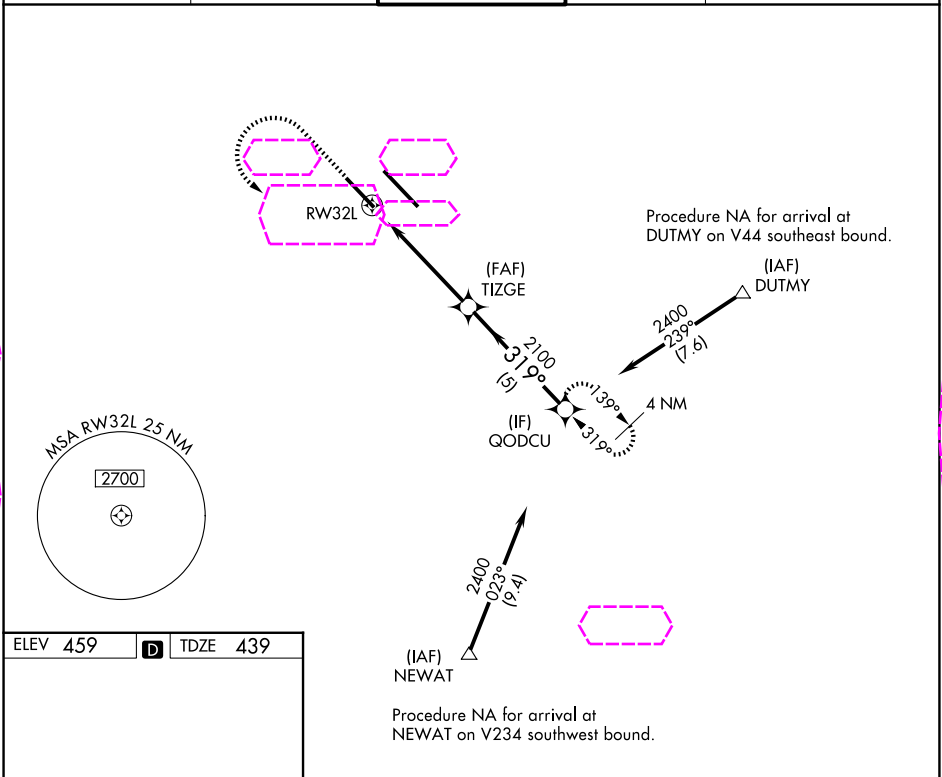
▼
▲
ASR

For inop ALS, increase LNAV Cat C/D visibility to 1 3/8 mile.

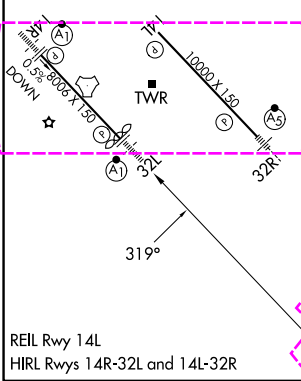
ALSF-1
A1

MISSED APPROACH: Climb to 1500 then climbing left turn to 2400 direct QODCU and hold.

ATIS ★ 128.7 256.7	ST LOUIS APP CON 125.2 281.5	SCOTT TOWER 128.25 253.5	GND CON 119.2 275.8	CLNC DEL 119.875 263.025
-----------------------	---------------------------------	-----------------------------	------------------------	-----------------------------



ELEV 459	D	TDZE 439
----------	---	----------



1500	2400	QODCU	VGSI and descent angles not coincident (VGSI Angle 3.00/TCH 50).	
↑	↷	✦		

BELLEVILLE, ILLINOIS
Orig-F 08SEP22

SCOTT AFB/MIDAMERICA ST LOUIS (BLV)
38°33'N-89°50'W
RNAV (GPS) RWY 32L

EC-3, 07 AUG 2025 to 04 SEP 2025

EC-3, 07 AUG 2025 to 04 SEP 2025