

BELLEVILLE, ILLINOIS

AL-46 (FAA)

23334

LOC I-OKX <b>109.9</b>	APP CRS <b>139°</b>	Rwy Idg <b>3006</b> TDZE <b>459</b> Apt Elev <b>459</b>
---------------------------	------------------------	---

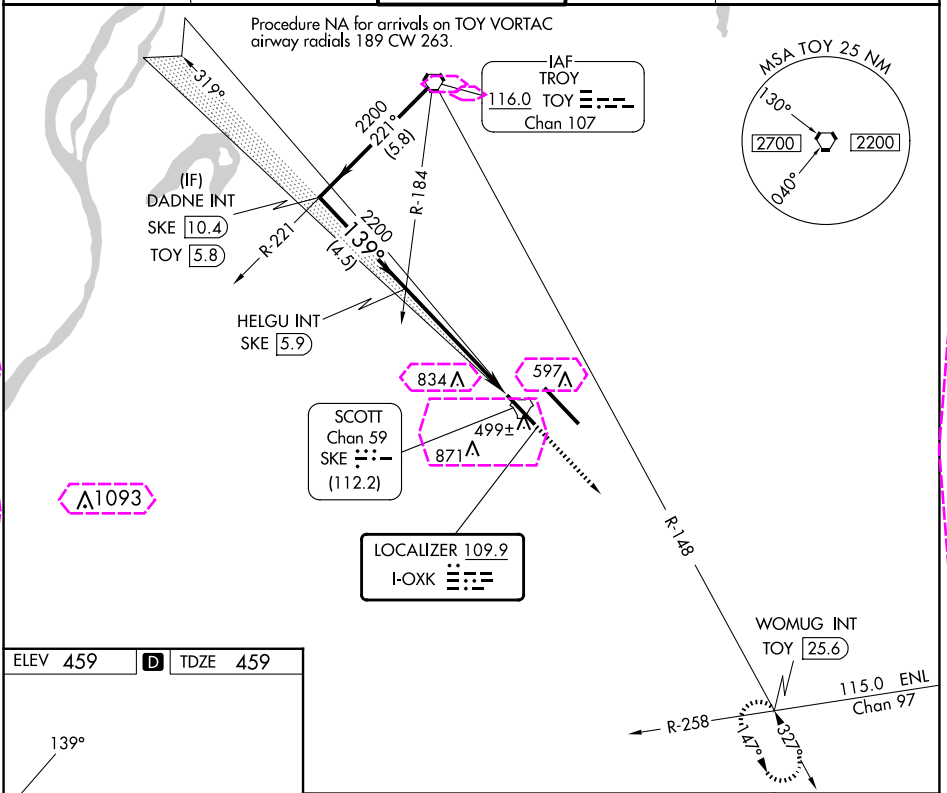
# ILS or LOC RWY 14R

## SCOTT AFB/MIDAMERICA ST LOUIS (BLV)

**⚠** For inop ALS, increase S-ILS 14R Cat E visibility to 1 1/4 mile. DME from SKE TACAN. DME use requires simultaneous reception of I-OKX and SKE DME.  
**ASR** \* RVR 1800 authorized with use of FD or AP or HUD to DA.

**ALSIF-1** MISSED APPROACH: Climb to 2200 then on TOY VORTAC R-148 to WOMUG INT/TOY 25.6 DME and hold.

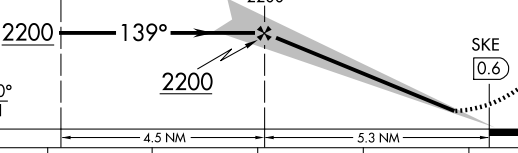
ATIS ★ <b>128.7 256.7</b>	ST LOUIS APP CON <b>125.2 281.5</b>	SCOTT TOWER <b>128.25 253.5</b>	GND CON <b>119.2 275.8</b>	CLNC DEL <b>119.875 263.025</b>
------------------------------	--	------------------------------------	-------------------------------	------------------------------------



ELEV <b>459</b>	<b>D</b>	TDZE <b>459</b>
-----------------	----------	-----------------



HIRL Rws 14L-32R and 14R-32L REIL Rwy 14L FAF to MAP 5.3 NM					
Knots	60	90	120	150	180
Min:Sec	5:18	3:32	2:39	2:07	1:46

DADNE INT SKE <u>10.4</u>		HELGU INT SKE <u>5.9</u>		2200 ↑ TOY R-148		WOMUG INT	
GS 3.00° TCH 51							
CATEGORY	A	B	C	D	E		
S-ILS 14R *	659/24 200 (200-½)						
S-LOC 14R	1040/24 581 (600-½)		1040-1¼ 581 (600-1¼)				
<b>CIRCLING</b>	1040-1 581 (600-1)	1120-1 661 (700-1)	1240-2¼ 781 (800-2¼)	1240-2½ 781 (800-2½)	1240-2¾ 781 (800-2¾)		

BELLEVILLE, ILLINOIS

Orig-H 08SEP22

SCOTT AFB/MIDAMERICA ST LOUIS (BLV)

38°33'N-89°50'W

# ILS or LOC RWY 14R

EC-3, 10 JUL 2025 to 07 AUG 2025

EC-3, 10 JUL 2025 to 07 AUG 2025

LOC I-0XK <b><u>109.9</u></b>	APP CRS <b>139°</b>	Rwy Ldg <b>8006</b> TDZE <b>459</b> Apt Elev <b>459</b>
----------------------------------	------------------------	---

ILS or LOC RWY 14R  
SCOTT AFB/MIDAMERICA ST LOUIS (BLV)

**T** For inop ALS, increase S-ILS 14R Cat E visibility to RVR 4000 and S-LOC 14R Cat E visibility to 1 3/4 mile. DME from SKE TACAN. DME use requires simultaneous reception of I-0XK and SKE DME.

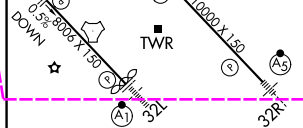
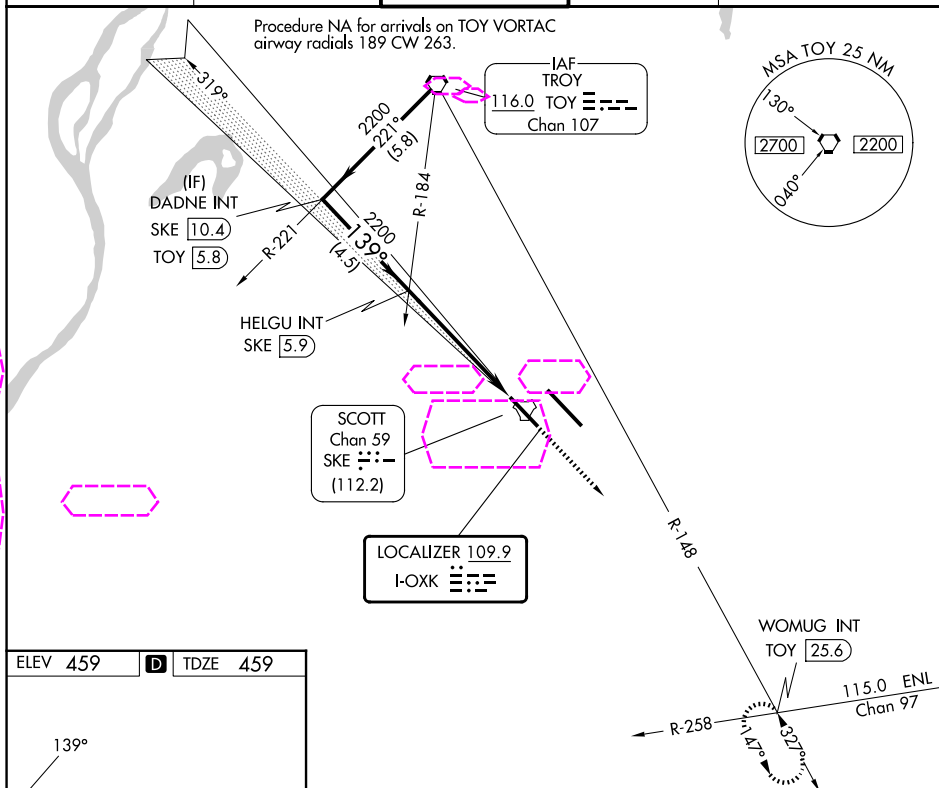
**A** \*RVR 1800 authorized with use of FD or AP or HUD to DA.

**ASR**

ALSF-1

**MISSED APPROACH:** Climb to 2200 then on TOY VORTAC R-148 to WOMUG INT/TOY 25.6 DME and hold.

ATIS *		ST LOUIS APP CON		SCOTT TOWER		GND CON		CLNC DEL	
128.7	256.7	125.2	281.5	128.25	253.5	119.2	275.8	119.875	263.025



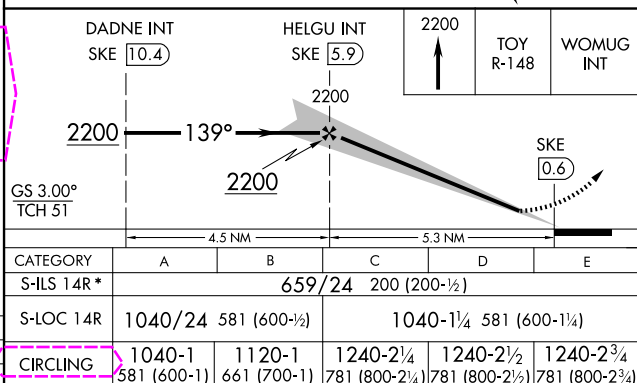
HIRL Rwy 14L-32R and 14R-32L  
REIL Rwy 14L

FAF to MAP 5.3 NM

Knots	60	90	120	150	180
Min:Sec	5:18	3:32	2:39	2:07	1:46

BELLEVILLE, ILLINOIS

Orig-H 08SEP22



SCOTT AFB/MIDAMERICA ST LOUIS (BLV)

ILS or LOC RWY 14R

38°33'N-89°50'W

EC-3, 07 AUG 2025 to 04 SEP 2025

EC-3, 07 AUG 2025 to 04 SEP 2025