

BELLINGHAM, WASHINGTON

AL-45 (FAA)

25163

WAAS CH 86223 W34A	APP CRS 344°	Rwy Ldg TDZE 171 Apt Elev 171
--	------------------------	---

RNAV (GPS) Y RWY 34

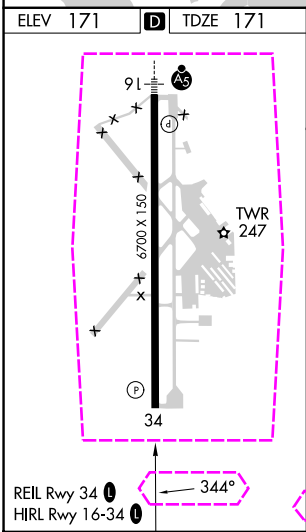
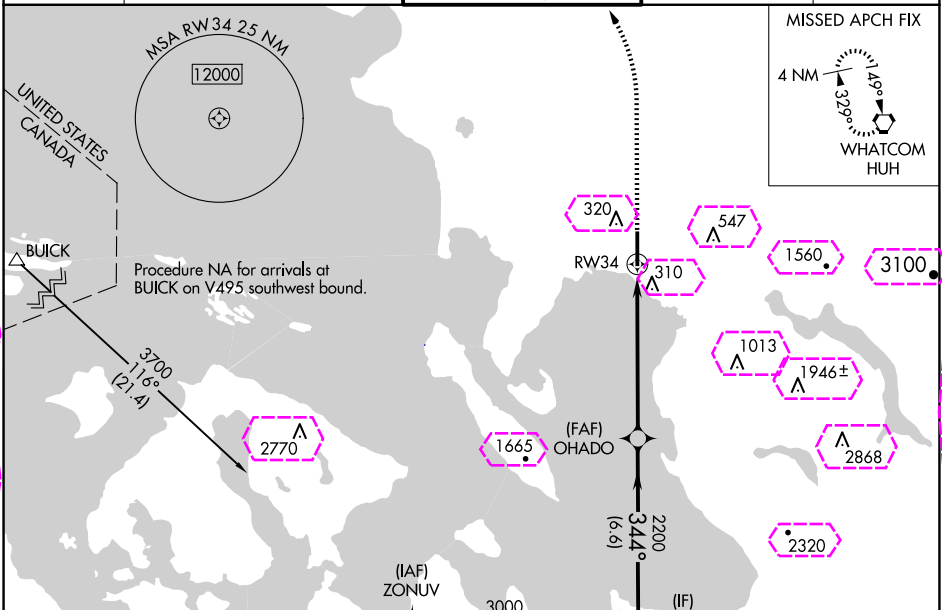
BELLINGHAM INTL (BLI)

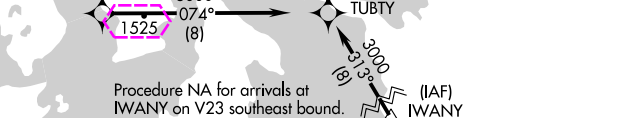

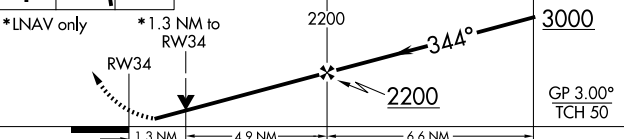

RNP APCH - GPS.

For uncompensated Baro-VNAV systems, LNAV/VNAV NA below -10°C or above 54°C.
Baro-VNAV and VDP NA when using Friday Harbor altimeter setting. When local altimeter setting not received, use Friday Harbor altimeter setting and increase all DAs 67 feet and all MDA 80 feet; increase LPV all Cats visibility, LNAV/VNAV all Cats visibility, LNAV Cats C/D and Circling Cat C ¼ mile. Rwy 34 helicopter visibility reduction below ¾ SM NA.

MISSED APPROACH: Climb to 700 then climbing left turn to 3000 direct HUH VORTAC and hold, continue climb-in-hold to 3000.

ATIS 134.45	VICTORIA TERMINAL APP CON 132.7	BELLINGHAM TOWER ★ 124.9 (CTAF) 0 379.3	GND CON 127.4 379.3	UNICOM 122.95
-----------------------	---	---	-------------------------------	-------------------------



				
700 ↑	3000 ↖	HUH 	TUBTY	
<p>*LNAV only *1.3 NM to RW34</p>  <p>RW34 1.3 NM 4.9 NM 6.6 NM OHADO 2200 3000 344° GP 3.00° TCH 50</p>				
CATEGORY	A	B	C	D
LPV DA	421-¾ 250 (300-¾)			
LNAV/VNAV DA	503-1½ 332 (400-1½)			
LNAV MDA	640-1 469 (500-1)		640-1½ 469 (500-1½)	
 CIRCLING	640-1 469 (500-1)		900-2 729 (800-2)	1160-3 989 (1000-3)

BELLINGHAM, WASHINGTON
Amdt 2A 06OCT22

48°48'N-122°32'W

RNAV (GPS) Y RWY 34

NW-1, 10 JUL 2025 to 07 AUG 2025

NW-1, 10 JUL 2025 to 07 AUG 2025

RNAV (GPS) Y RWY 34