

BELLINGHAM, WASHINGTON

AL-45 (FAA)

25163

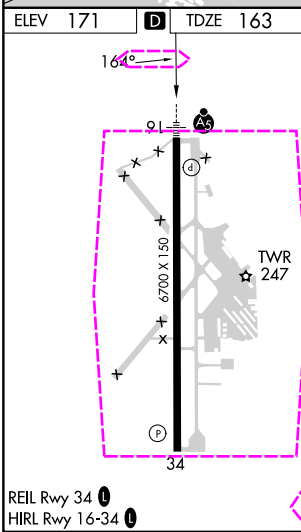
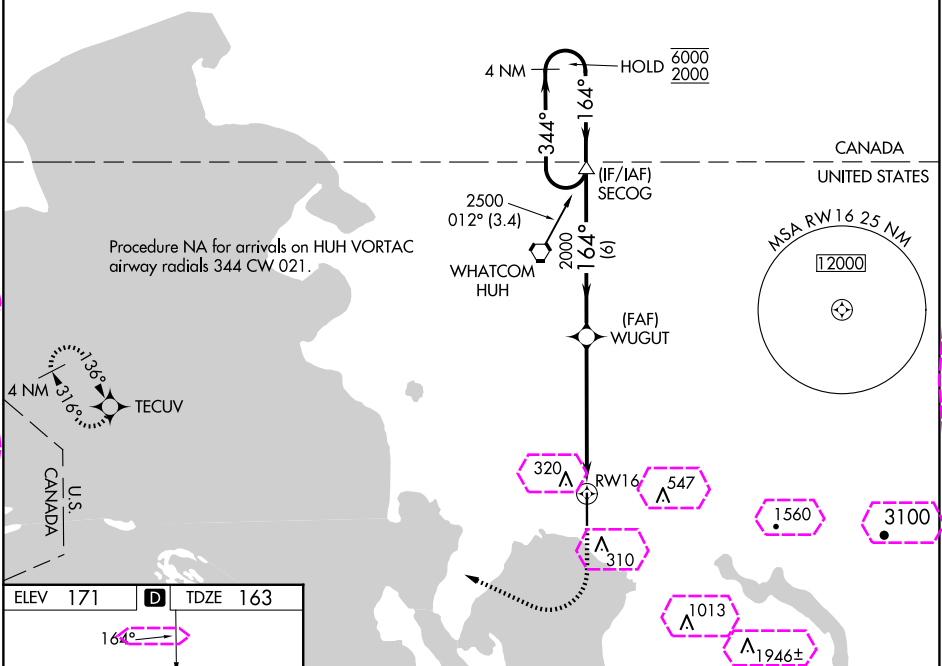
WAAS CH 45999 W16A	APP CRS 164°	Rwy Ldg TDZE 163 Apt Elev 171
--	------------------------	---

RNAV (GPS) Y RWY 16

BELLINGHAM INTL (BLI)

RNP APCH. A For uncompensated Baro-VNAV systems, LNAV/VNAV NA below -10°C or above 54°C. #RVR 1800 authorized with use of FD or AP or HUD to DA.	MALSR 	MISSED APPROACH: Climb to 700 then climbing right turn to 2000 direct TECUV and hold.
--	-----------	--

ATIS 134.45	VICTORIA TERMINAL APP CON 132.7	BELLINGHAM TOWER ★ 124.9 (CTAF) 0 379.3	GND CON 127.4 379.3	UNICOM 122.95
-----------------------	---	---	-------------------------------	-------------------------



4 NM Holding Pattern		SECOG	WUGUT	2000	700	2000	TECUV
6000 ← 344°		164° →		2000	*1.1 NM to RW16		
GP 3.00°		TCH 51					
6 NM		4.5 NM		1.1 NM			
CATEGORY	A	B	C	D			
LPV DA #	363/24 200 (200-½)						
LNAV/VNAV DA	491/30 328 (400-¾)						
LNAV MDA	560/24 397 (400-½)		560/35 397 (400-¾)				
C CIRCLING	640-1 469 (500-1)		900-2 729 (800-2)		1160-3 989 (1000-3)		

BELLINGHAM, WASHINGTON
Amdt 3C 15AUG19

48°48'N-122°32'W

RNAV (GPS) Y RWY 16

NW-1, 10 JUL 2025 to 07 AUG 2025

NW-1, 10 JUL 2025 to 07 AUG 2025

BELLINGHAM, WASHINGTON

AL-45 (FAA)

25219

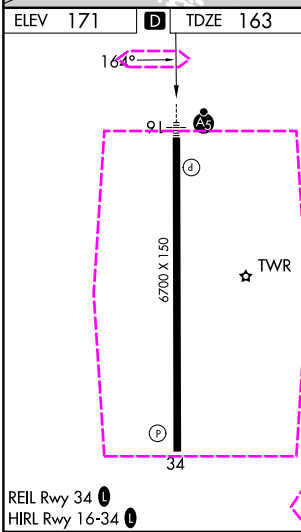
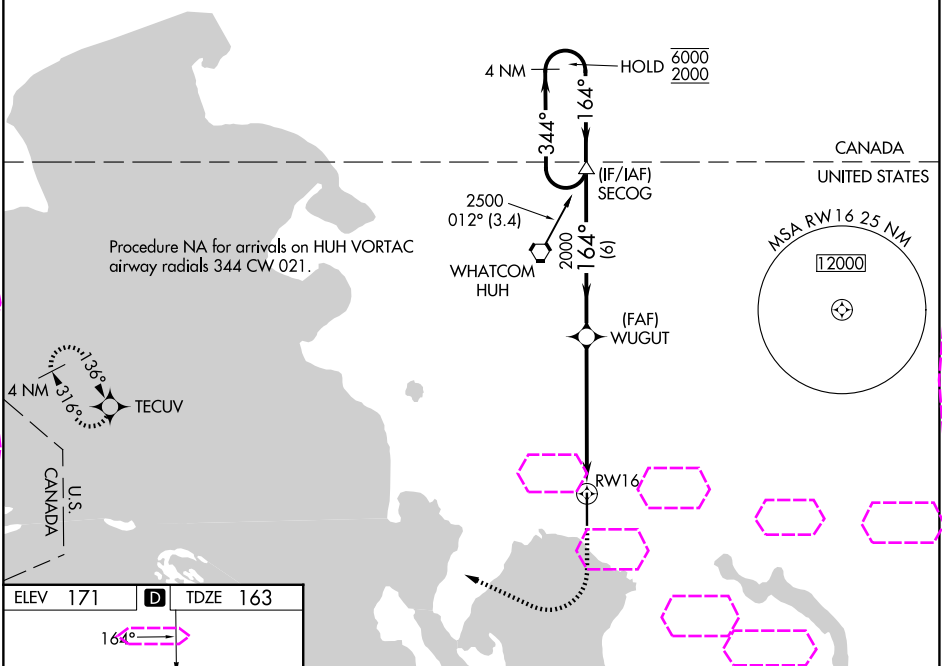
WAAS CH 45999 W16A	APP CRS 164°	Rwy Ldg TDZE 163 Apt Elev 171
--	------------------------	---

RNAV (GPS) Y RWY 16

BELLINGHAM INTL (BLI)

RNP APCH. A For uncompensated Baro-VNAV systems, LNAV/VNAV NA below -10°C or above 54°C. #RVR 1800 authorized with use of FD or AP or HUD to DA.	MALSR 	MISSED APPROACH: Climb to 700 then climbing right turn to 2000 direct TECUV and hold.
--	-----------	--

ATIS 134.45	VICTORIA TERMINAL APP CON 132.7	BELLINGHAM TOWER ★ 124.9 (CTAF) 0 379.3	GND CON 127.4 379.3	UNICOM 122.95
-----------------------	---	---	-------------------------------	-------------------------



4 NM Holding Pattern	SECOG	WUGUT	700	2000	TECUV
6000 2000	344° 164°	164° 2000			
GP 3.00° TCH 51					
	6 NM	4.5 NM	1.1 NM		
CATEGORY	A	B	C	D	
LPV DA #		363/24	200 (200-½)		
LNAV/VNAV DA		491/30	328 (400-¾)		
LNAV MDA	560/24	397 (400-½)	560/35	397 (400-¾)	
CIRCLING	640-1	469 (500-1)	900-2 729 (800-2)	1160-3 989 (1000-3)	

BELLINGHAM, WASHINGTON
Amdt 3C 15AUG19

48°48'N-122°32'W

BELLINGHAM INTL (BLI)
RNAV (GPS) Y RWY 16

NW-1, 07 AUG 2025 to 04 SEP 2025

NW-1, 07 AUG 2025 to 04 SEP 2025