

BELLINGHAM, WASHINGTON

AL-45 (FAA)

25163

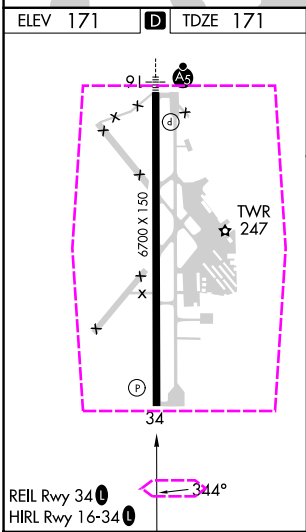
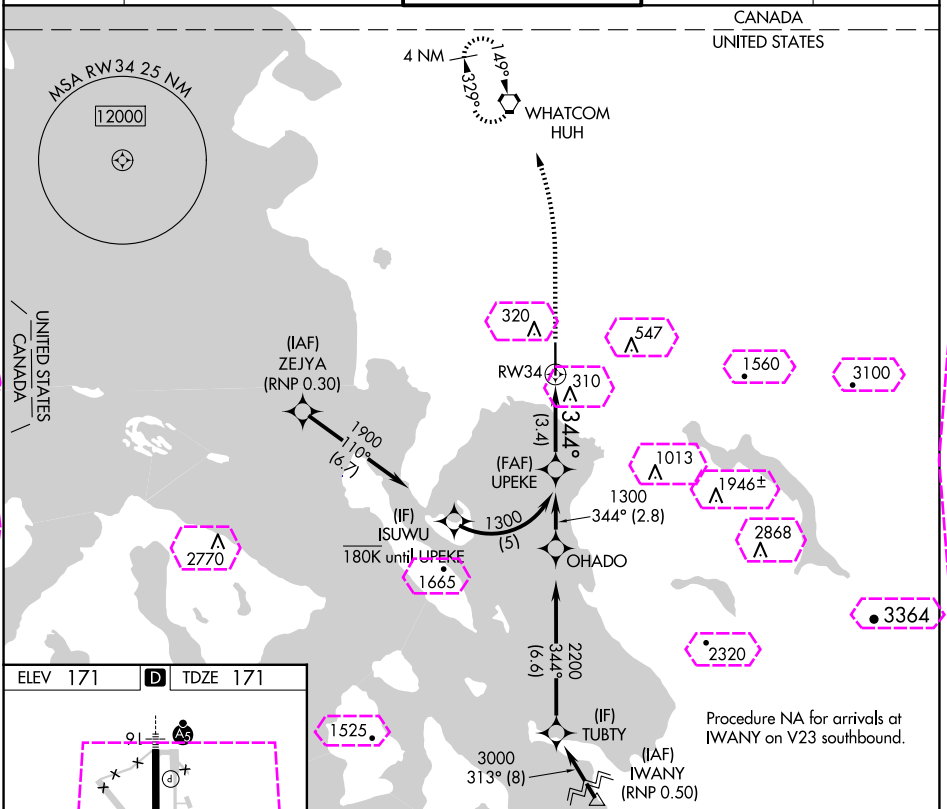
APP CRS	Rwy Ldg	6700
344°	TDZE	171
	Apt Elev	171




RNAV (RNP) Z RWY 34

BELLINGHAM INTL (BLI)

RNP AR APCH-GPS.	MISSED APPROACH: Climb to 700 then climbing left turn to 3000 direct WHATCOM VORTAC and hold, continue climb-in-hold to 3000.
For uncompensated Baro-VNAV systems, procedure NA below -7°C or above 54°C.	

ATIS	VICTORIA TERMINAL APP CON	BELLINGHAM TOWER ★	GND CON	UNICOM
134.45	132.7	124.9 (CTAF) 0 379.3	127.4 379.3	122.95



700	3000	HUH		
			See planview for multiple IF locations.	
			UPEKE	1300
RW34			344°	1300
			GP 3.00°	TCH 50
			3.4 NM	
CATEGORY	A	B	C	D
RNP 0.11 DA	463-7 ⁷ / ₈ 292 (300-7 ⁷ / ₈)			
RNP 0.30 DA	578-13 ¹³ / ₈ 407 (500-13 ¹³ / ₈)			
AUTHORIZATION REQUIRED				

AUTHORIZATION REQUIRED

BELLINGHAM, WASHINGTON

Amdt 1B 19MAY22

48°48'N-122°32'W

BELLINGHAM INTL (BLI)

RNAV (RNP) Z RWY 34

NW-1, 10 JUL 2025 to 07 AUG 2025

NW-1, 10 JUL 2025 to 07 AUG 2025

BELLINGHAM INTL (BLI)
RNAV (RNP) Z RWY 34