

BELLINGHAM, WASHINGTON

AL-45 (FAA)

25163

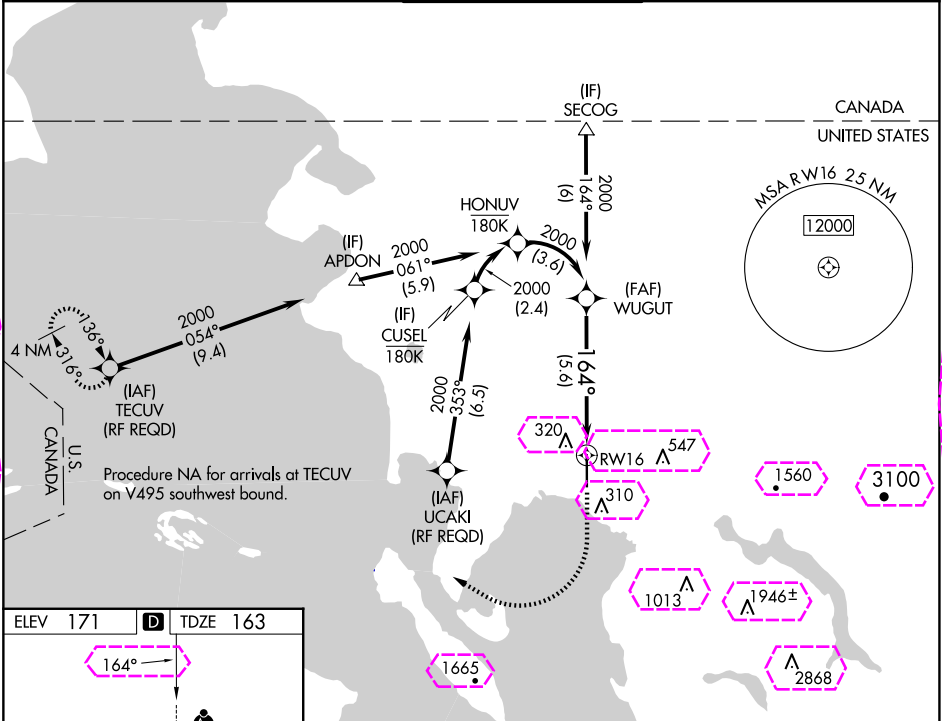
APP CRS	Rwy Ldg	6700
164°	TDZE	163
	Apt Elev	171

RNAV (RNP) Z RWY 16

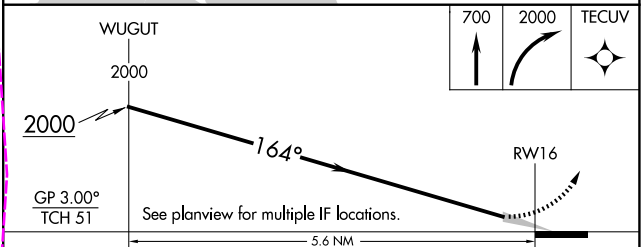
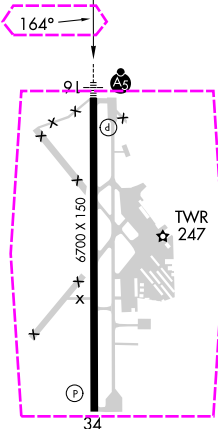
BELLINGHAM INTL (BLI)

RNP AR APCH	MALSR	MISSED APPROACH: Climb to 700 then climbing right turn to 2000 direct TECUV and hold.
For uncompensated Baro-VNAV systems, procedure NA below -10°C or above 54°C. For inop ALS, increase RNP 0.27 all Cats visibility to RVR 4500, increase RNP 0.30 all Cats visibility to RVR 6000.		

ATIS 134.45	VICTORIA TERMINAL APP CON 132.7	BELLINGHAM TOWER★ 124.9 (CTAF) 0 379.3	GND CON 127.4 379.3	UNICOM 122.95
----------------	------------------------------------	---	------------------------	------------------



ELEV 171	D	TDZE 163
----------	---	----------



CATEGORY	A	B	C	D
RNP 0.27 DA	483/24	320 (400-½)		
RNP 0.30 DA	580/45	417 (500-¾)		

AUTHORIZATION REQUIRED

BELLINGHAM, WASHINGTON

Amdt 1A 15AUG19

48°48'N-122°32'W

BELLINGHAM INTL (BLI)

RNAV (RNP) Z RWY 16

NW-1, 10 JUL 2025 to 07 AUG 2025

NW-1, 10 JUL 2025 to 07 AUG 2025

BELLINGHAM, WASHINGTON

AL-45 (FAA)

25219

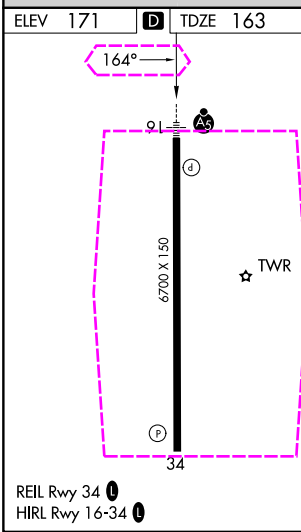
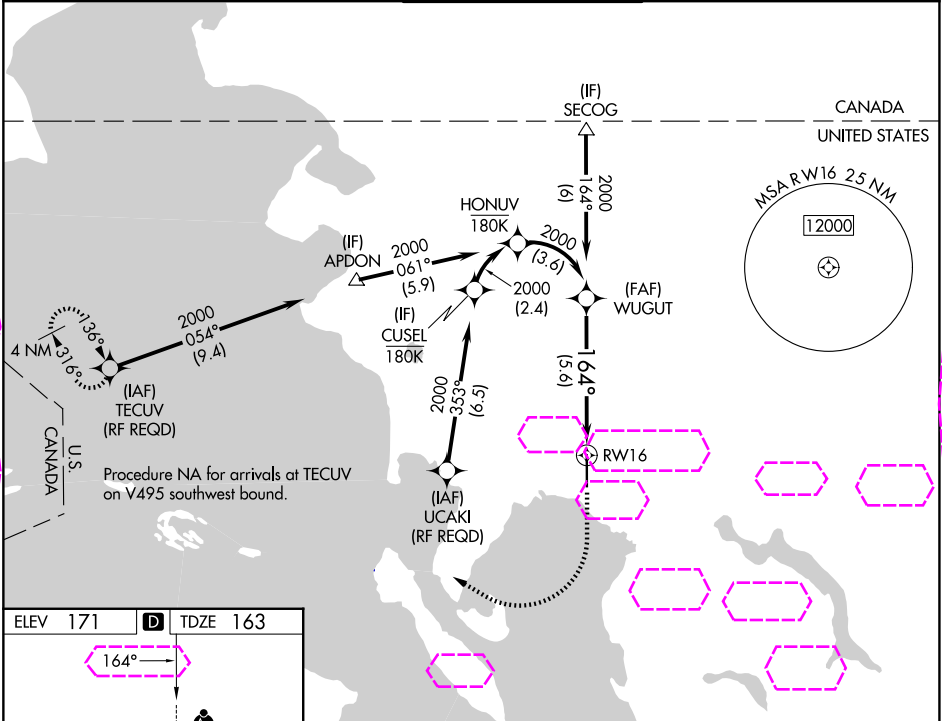
APP CRS	Rwy Ldg	6700
164°	TDZE	163
	Apt Elev	171

RNAV (RNP) Z RWY 16

BELLINGHAM INTL (BLI)

RNP AR APCH	MALSR	MISSED APPROACH: Climb to 700 then climbing right turn to 2000 direct TECUV and hold.
For uncompensated Baro-VNAV systems, procedure NA below -10°C or above 54°C. For inop ALS, increase RNP 0.27 all Cats visibility to RVR 4500, increase RNP 0.30 all Cats visibility to RVR 6000.		

ATIS 134.45	VICTORIA TERMINAL APP CON 132.7	BELLINGHAM TOWER★ 124.9 (CTAF) 0 379.3	GND CON 127.4 379.3	UNICOM 122.95
----------------	------------------------------------	---	------------------------	------------------



WUGUT	2000	700	2000	TECUV
2000	164°			
GP 3.00°	TCH 51			
See planview for multiple IF locations.				
5.6 NM				
CATEGORY	A	B	C	D
RNP 0.27 DA	483/24 320 (400-½)			
RNP 0.30 DA	580/45 417 (500-¾)			
AUTHORIZATION REQUIRED				

BELLINGHAM, WASHINGTON
Amdt 1A 15AUG19

48°48'N-122°32'W

BELLINGHAM INTL (BLI)
RNAV (RNP) Z RWY 16

NW-1, 07 AUG 2025 to 04 SEP 2025

NW-1, 07 AUG 2025 to 04 SEP 2025