

LOC/DME I-BL1 108.5 Chan 22	APP CRS 164°	Rwy Ldg 6700 TDZE 163 Apt Elev 171
---	------------------------	---

ILS or LOC RWY 16

BELLINGHAM INTL (BLI)

DME or RADAR required.

T Autopilot coupled approach NA below 500. For inop ALS, **A** increase S-LOC Cat C/D visibility to RVR 6000.

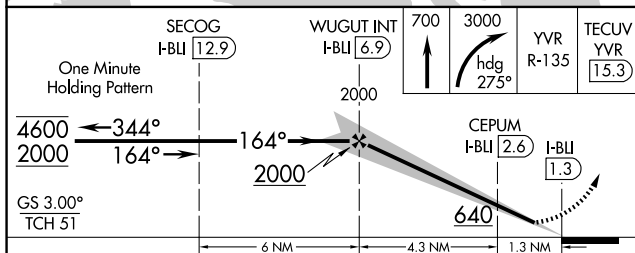
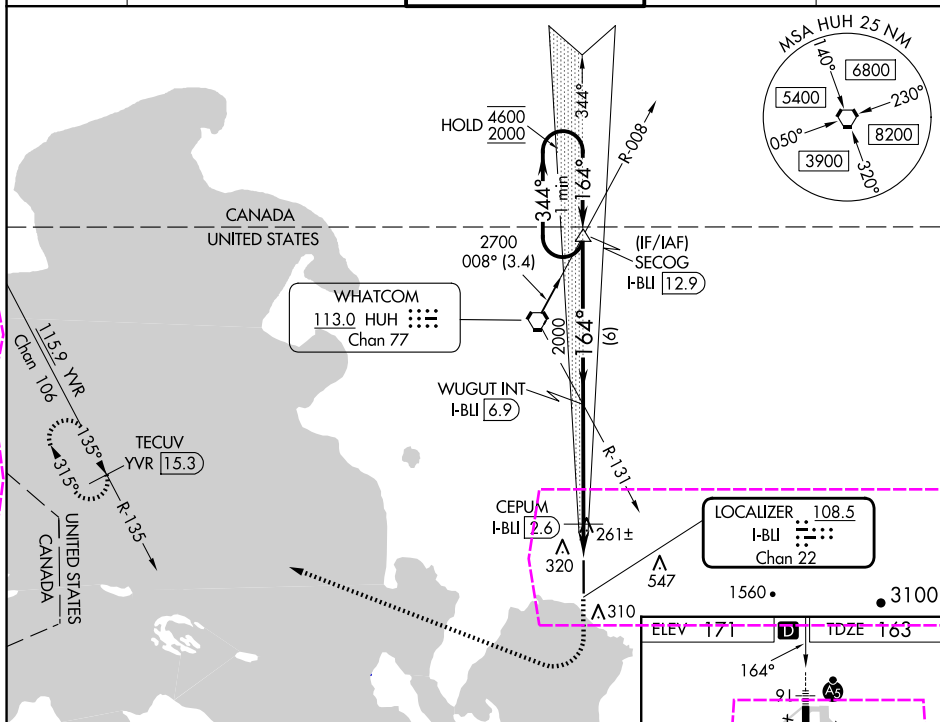
*RVR 1800 authorized with use of FD or AP or HUD to DA (NA when using FHR altimeter setting)

MALSR

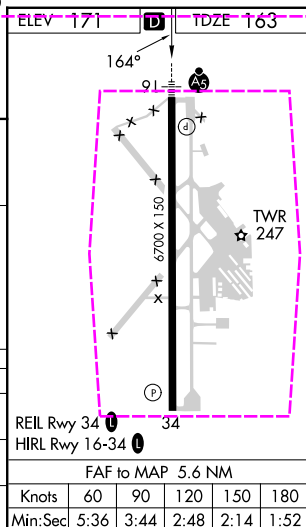


MISSED APPROACH: Climb to 700 then climbing right turn to 3000 on heading 275° and on YVR VOR/DME R-135 to TECUV/YVR 15.3 DME and hold.

ATIS 134.45	VICTORIA TERMINAL APP CON 132.7	BELLINGHAM TOWER ★ 124.9 (CTAF) 0 379.3	GND CON 127.4 379.3	UNICOM 122.95
-----------------------	---	--	-------------------------------	-------------------------



CATEGORY	A	B	C	D
S-ILS 16*	363/24 200 (200-½)			
S-LOC 16	520/24 357 (400-½)		520/40 357 (400-¾)	
C CIRCLING	640-1 469 (500-1)		900-2 729 (800-2)	1160-3 989 (1000-3)



BELLINGHAM, WASHINGTON

Amdt 9 17APR25

48°48'N-122°32'W

BELLINGHAM INTL (BLI)

ILS or LOC RWY 16

BELLINGHAM, WASHINGTON

AL-45 (FAA)

25219

LOC/DME I-BLI 108.5 Chan 22	APP CRS 164°	Rwy Ldg TDZE 163 Apt Elev 171
---	------------------------	---

ILS or LOC RWY 16

BELLINGHAM INTL (BLI)

DME or RADAR required.

▼

▲

Autopilot coupled approach NA below 500. For inop ALS, increase S-LOC Cat C/D visibility to RVR 6000.
*RVR 1800 authorized with use of FD or AP or HUD to DA (NA when using FHR altimeter setting).

MALSR

MISSED APPROACH: Climb to 700 then climbing right turn to 3000 on heading 275° and on YVR VOR/DME R-135 to TECUV/YVR 15.3 DME and hold.

ATIS 134.45	VICTORIA TERMINAL APP CON 132.7	BELLINGHAM TOWER ★ 124.9 (CTAF) 379.3	GND CON 127.4 379.3	UNICOM 122.95
-----------------------	---	--	-------------------------------	-------------------------

