

BELLINGHAM, WASHINGTON

AL-45 (FAA)

25163

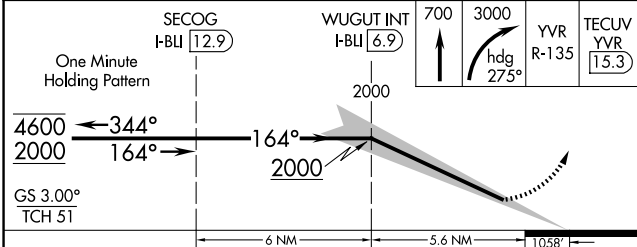
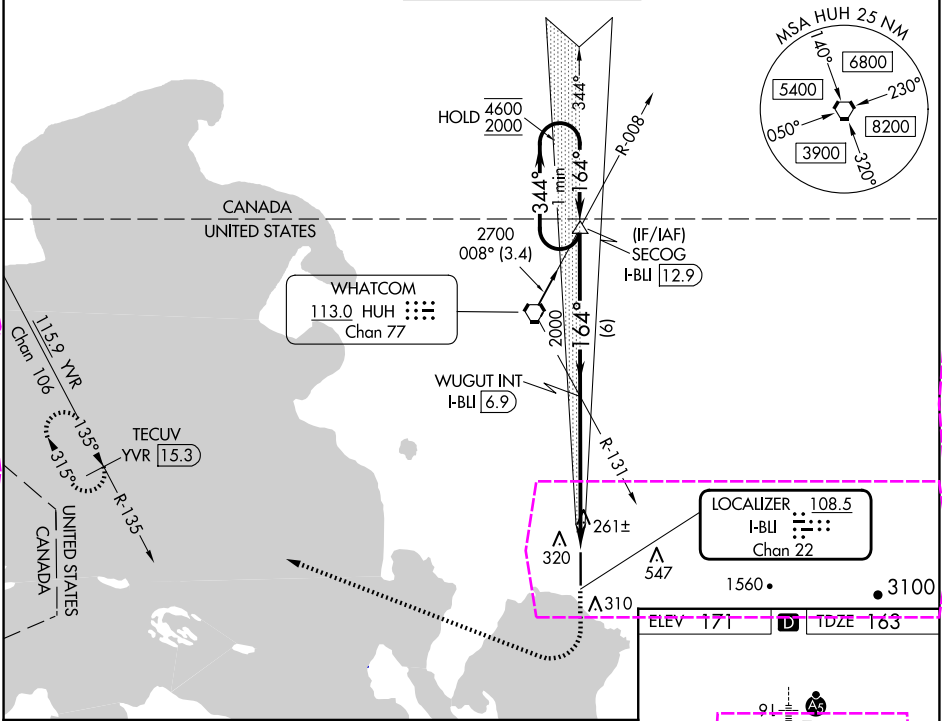
| | | |
|---|------------------------|---|
| LOC/DME I-BLI 108.5 Chan 22 | APP CRS 164° | Rwy Ldg TDZE 163 Apt Elev 171 |
|---|------------------------|---|

ILS RWY 16 (SA CAT I)

BELLINGHAM INTL (BLI)

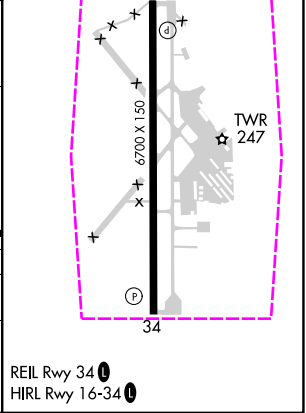
| | | |
|--|-----------|---|
| DME or RADAR required. | MALSR | MISSED APPROACH: Climb to 700 then climbing right turn to 3000 on heading 275° and on YVR VOR/DME R-135 to TECUV/YVR 15.3 DME and hold. |
| Requires specific OPSPEC, MSPEC or LOA approval. Autopilot coupled approach NA below 500. Procedure NA when tower closed. | | |

| | | | | |
|-----------------------|---|--|-------------------------------|-------------------------|
| ATIS 134.45 | VICTORIA TERMINAL APP CON 132.7 | BELLINGHAM TOWER ★ 124.9 (CTAF) 0 379.3 | GND CON 127.4 379.3 | UNICOM 122.95 |
|-----------------------|---|--|-------------------------------|-------------------------|



| | | | | |
|----------|----------------------|---|---|---|
| CATEGORY | A | B | C | D |
| S-ILS 16 | RA 244/14 150 DA 313 | | | |

SA CATEGORY I ILS-SPECIAL AIRCREW & AIRCRAFT CERTIFICATION REQUIRED



BELLINGHAM, WASHINGTON
Amdt 9 17APR25

48°48'N-122°32'W

BELLINGHAM INTL (BLI)
ILS RWY 16 (SA CAT I)

NW-1, 10 JUL 2025 to 07 AUG 2025

NW-1, 10 JUL 2025 to 07 AUG 2025

BELLINGHAM, WASHINGTON

AL-45 (FAA)

25219

| | | |
|---|------------------------|---|
| LOC/DME I-BLI 108.5 Chan 22 | APP CRS 164° | Rwy Ldg TDZE 163 Apt Elev 171 |
|---|------------------------|---|

ILS RWY 16 (SA CAT I)

BELLINGHAM INTL (BLI)

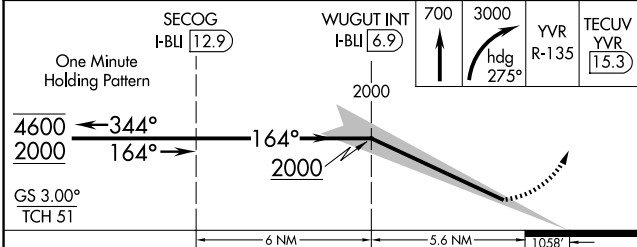
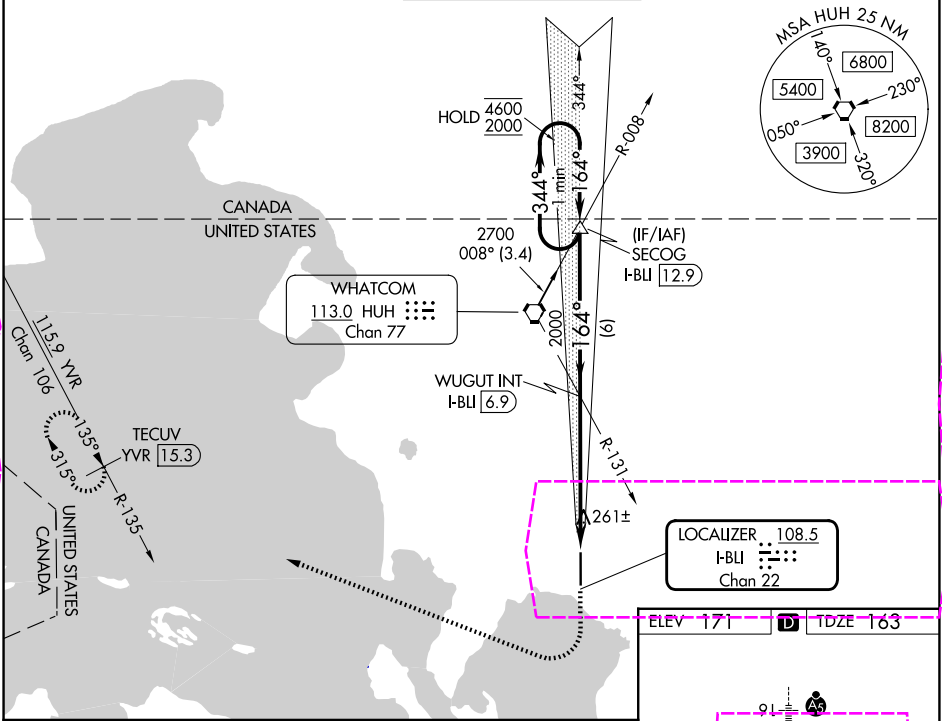
DME or RADAR required.

Requires specific OPSPEC, MSPEC or LOA approval.
Autopilot coupled approach NA below 500. Procedure
NA when tower closed.

MALSR

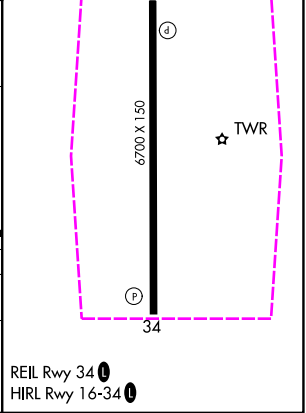
MISSED APPROACH: Climb to 700 then climbing
right turn to 3000 on heading 275° and on YVR
VOR/DME R-135 to TECUV/YVR 15.3 DME
and hold.

| | | | | |
|-----------------------|---|--|-------------------------------|-------------------------|
| ATIS 134.45 | VICTORIA TERMINAL APP CON 132.7 | BELLINGHAM TOWER ★ 124.9 (CTAF) 379.3 | GND CON 127.4 379.3 | UNICOM 122.95 |
|-----------------------|---|--|-------------------------------|-------------------------|



| | | | | |
|----------|----------------------|---|---|---|
| CATEGORY | A | B | C | D |
| S-ILS 16 | RA 244/14 150 DA 313 | | | |

**SA CATEGORY I ILS-SPECIAL AIRCREW
& AIRCRAFT CERTIFICATION REQUIRED**



BELLINGHAM, WASHINGTON

Amtd 9 17APR25

48°48'N-122°32'W

BELLINGHAM INTL (BLI)

ILS RWY 16 (SA CAT I)