

BATTLE CREEK, MICHIGAN

AL-41 (FAA)

25051

WAAS CH 61220 W05A	APP CRS 047°	Rwy Idg TDZE 952 Apt Elev 952	10004
--	------------------------	---	--------------

RNAV (GPS) RWY 5L

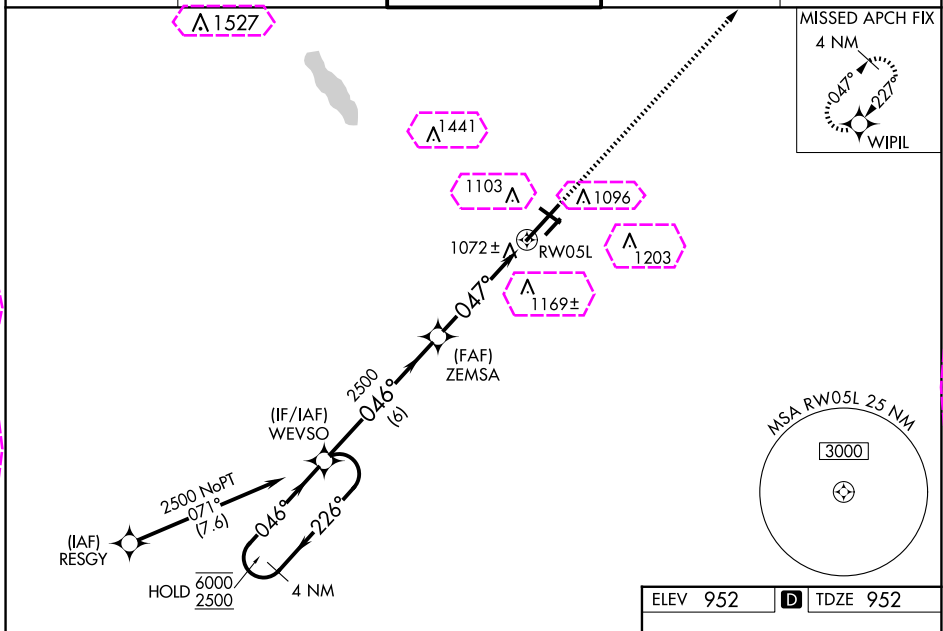
BATTLE CREEK EXEC AT KELLOGG FLD (BTL)

RNP APCH - GPS

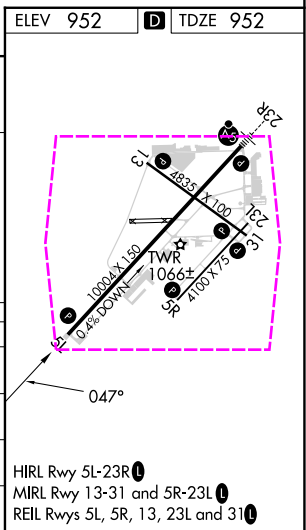
For uncompensated Baro-VNAV systems, LNAV/VNAV NA below -16°C or above 54°C. Circling to Rwy 5R, 23L and 31 NA at night. When local altimeter setting not received, use Grand Rapids altimeter setting and increase LPV DA to 1425 feet and all visibilities $\frac{3}{8}$ SM; increase LNAV/VNAV DA to 1361 feet and all visibilities $\frac{1}{4}$ SM; increase all MDAs 120 feet and LNAV visibility Cat C and D $\frac{3}{8}$ SM and Circling visibility Cat C and D $\frac{1}{2}$ SM. VDP and Baro-VNAV NA when using Grand Rapids altimeter setting. Rwy 5L helicopter visibility reduction below $\frac{3}{4}$ SM NA.

MISSED APPROACH:
Climb to 2500 direct
WIPIL and hold.

ATIS 128.325	GREAT LAKES APP CON★ 119.2 239.25	BATTLE CREEK TOWER★ 126.825 (CTAF)	GND CON 121.7	UNICOM 122.95
------------------------	---	--	-------------------------	-------------------------



4 NM Holding Pattern		WEVSO	ZEMSA	2500	WIPIL
6000 ← 226°		2500 → 046°	2500	1.4 NM to RW05L	
GP 3.00°		046°	047°	RW05L	
TCH 49		6 NM	3.3 NM	1.4	
CATEGORY	A	B	C	D	
LPV DA		1317-1	365 (400-1)		
LNAV/VNAV DA		1253- $\frac{7}{8}$	301 (400- $\frac{7}{8}$)		
LNAV MDA	1440-1	488 (500-1)	1440- $\frac{13}{8}$	488 (500- $\frac{13}{8}$)	
CIRCLING	1440-1	1480-1	1520- $\frac{1}{2}$	1520-2	
	488 (500-1)	528 (600-1)	568 (600- $\frac{1}{2}$)	568 (600-2)	



BATTLE CREEK, MICHIGAN
Amdt 1D 21MAR24

BATTLE CREEK EXEC AT KELLOGG FLD (BTL)
RNAV (GPS) RWY 5L

42°18'N-85°15'W

EC-1, 10 JUL 2025 to 07 AUG 2025

EC-1, 10 JUL 2025 to 07 AUG 2025

BATTLE CREEK, MICHIGAN

AL-41 (FAA)

25219

WAAS CH 61220 W05A	APP CRS 047°	Rwy Ldg TDZE 952 Apt Elev 952
--	------------------------	---

RNAV (GPS) RWY 5L

BATTLE CREEK EXEC AT KELLOGG FLD (BTL)

RNP APCH - GPS

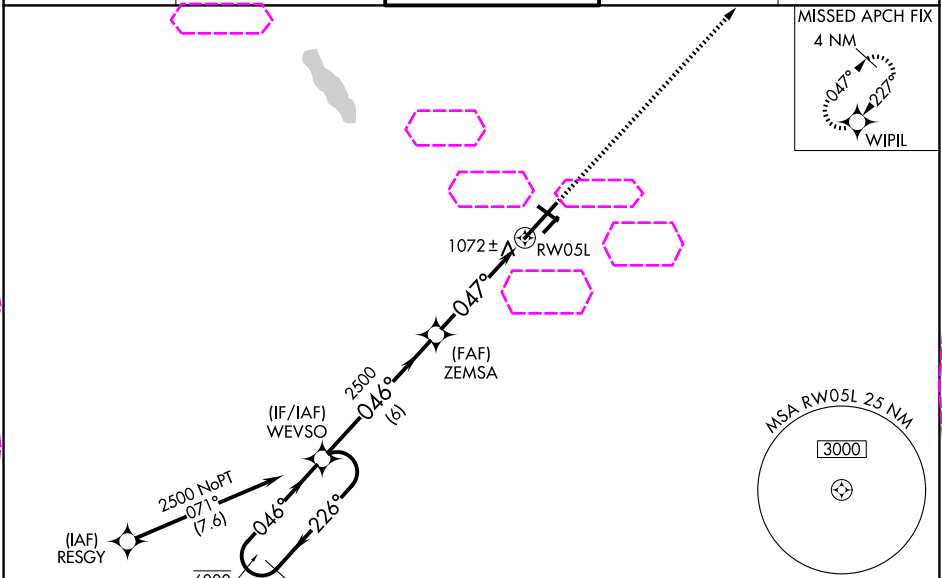
▼

⚠

For uncompensated Baro-VNAV systems, LNAV/VNAV NA below -16°C or above 54°C. Circling to Rwy 5R, 23L and 31 NA at night. When local altimeter setting not received, use Grand Rapids altimeter setting and increase LPV DA to 1425 feet and all visibilities $\frac{3}{8}$ SM; increase LNAV/VNAV DA to 1361 feet and all visibilities $\frac{1}{4}$ SM; increase all MDAs 120 feet and LNAV visibility Cat C and D $\frac{3}{8}$ SM and Circling visibility Cat C and D $\frac{1}{2}$ SM. VDP and Baro-VNAV NA when using Grand Rapids altimeter setting. Rwy 5L helicopter visibility reduction below $\frac{3}{4}$ SM NA.

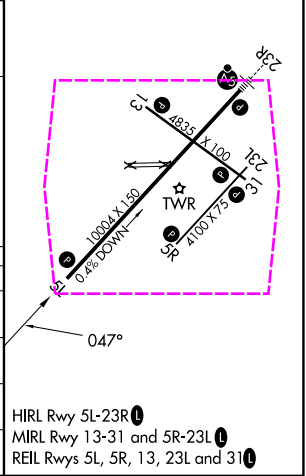
MISSED APPROACH:
Climb to 2500 direct
WIPIL and hold.

ATIS 128.325	GREAT LAKES APP CON★ 119.2 239.25	BATTLE CREEK TOWER★ 126.825 (CTAF)	GND CON 121.7	UNICOM 122.95
------------------------	---	--	-------------------------	-------------------------



ELEV 952	TDZE 952
----------	----------

4 NM Holding Pattern		WEVSO	ZEMSA	2500	WIPIL
6000 ← 226° 2500 ← 046°		046°	047°	1.4 NM to RWY 05L	
GP 3.00° TCH 49		2500			
		6 NM	3.3 NM	1.4	
CATEGORY	A	B	C	D	
LPV DA		1317-1	365 (400-1)		
LNAV/VNAV DA		1253- $\frac{7}{8}$	301 (400- $\frac{7}{8}$)		
LNAV MDA	1440-1	488 (500-1)	1440- $1\frac{3}{8}$	488 (500- $1\frac{3}{8}$)	
CIRCLING	1440-1 488 (500-1)	1480-1 528 (600-1)	1520- $1\frac{1}{2}$ 568 (600- $1\frac{1}{2}$)	1520-2 568 (600-2)	



BATTLE CREEK, MICHIGAN
Amdt 1D 21MAR24

42°18'N-85°15'W

BATTLE CREEK EXEC AT KELLOGG FLD (BTL)
RNAV (GPS) RWY 5L

EC-1, 07 AUG 2025 to 04 SEP 2025

EC-1, 07 AUG 2025 to 04 SEP 2025