

BATTLE CREEK, MICHIGAN

AL-41 (FAA)

25051

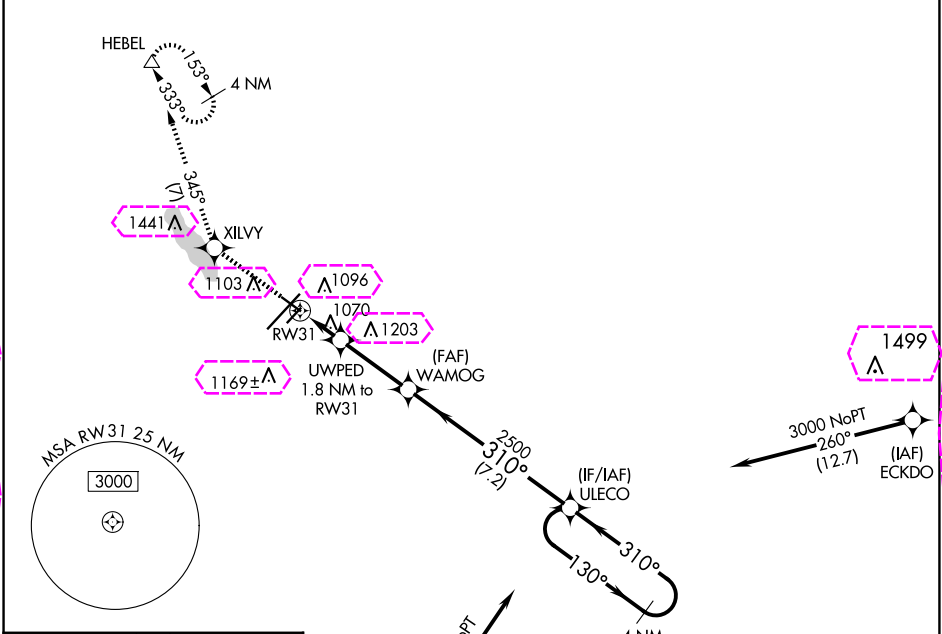
APP CRS	Rwy Idg	4835
310°	TDZE	930
	Apt Elev	952

RNAV (GPS) RWY 31

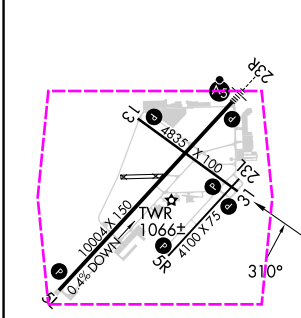
BATTLE CREEK EXEC AT KELLOGG FLD (BTL)

RNP APCH.	MISSED APPROACH: Climb to 3000 direct XILVY and on 345° track to HEBEL and hold.
Circling NA to Rwys 5R and 23L. Rwy 31 helicopter visibility reduction below 1 SM NA. Procedure NA at night.	

ATIS 128.325	GREAT LAKES APP CON★ 119.2 239.25	BATTLE CREEK TOWER★ 126.825 (CTAF)	GND CON 121.7	UNICOM 122.95
-----------------	--------------------------------------	---------------------------------------	------------------	------------------



ELEV 952	D	TDZE 930
----------	---	----------



3000	XILVY	tr 345°	HEBEL	4 NM Holding Pattern
UWPED 1.8 NM to RW31	WAMOG	ULECO	310°	3000
RW31	TCH 40	2500	1540	VGSI and descent angles not coincident (VGSI Angle 3.00/TCH 25).
1.8 NM	3 NM	7.2 NM		
CATEGORY	A	B	C	D
LNAV MDA	1320-1	390 (400-1)	1320-1½	390 (400-1½)
CIRCLING	1420-1 468 (500-1)	1480-1 528 (600-1)	1520-1½ 568 (600-1½)	1520-2 568 (600-2)

HIRL Rwy 5L-23R
MIRL Rwys 13-31 and 5R-23L
REIL Rwys 5L, 5R, 13, 23L and 31

BATTLE CREEK, MICHIGAN

Amdt 1A 10SEP20

BATTLE CREEK EXEC AT KELLOGG FLD (BTL)

42°18'N-85°15'W

RNAV (GPS) RWY 31

EC-1, 10 JUL 2025 to 07 AUG 2025

EC-1, 10 JUL 2025 to 07 AUG 2025

BATTLE CREEK, MICHIGAN

AL-41 (FAA)

25219

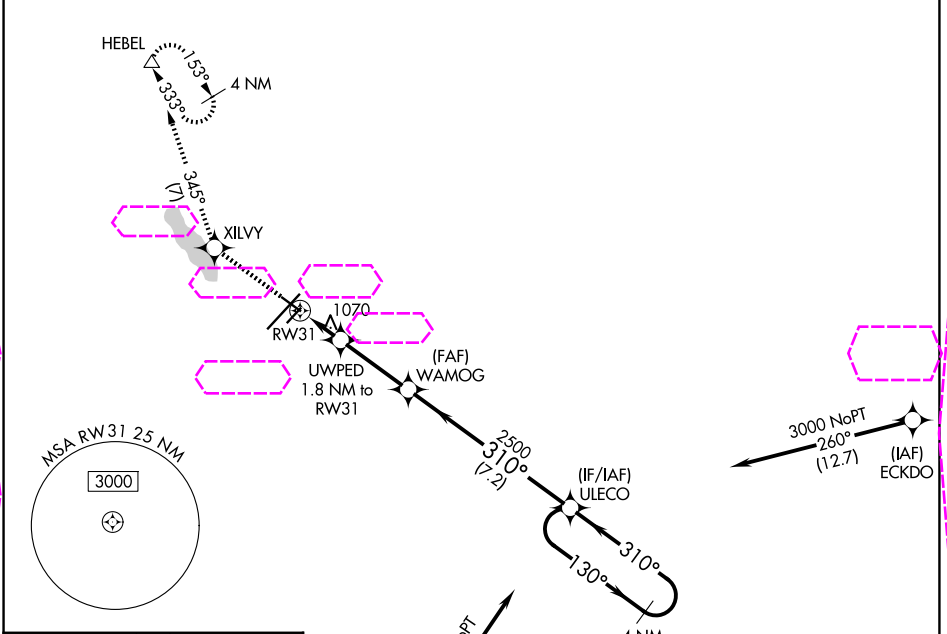
APP CRS	Rwy Ldg	4835
310°	TDZE	930
	Apt Elev	952

RNAV (GPS) RWY 31

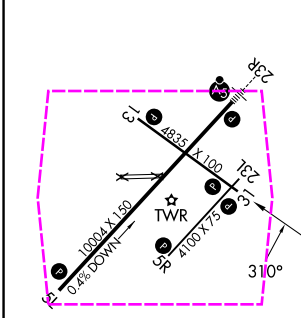
BATTLE CREEK EXEC AT KELLOGG FLD (BTL)

RNP APCH.	MISSED APPROACH: Climb to 3000 direct XILVY and on 345° track to HEBEL and hold.
Circling NA to Rwys 5R and 23L. Rwy 31 helicopter visibility reduction below 1 SM NA. Procedure NA at night.	

ATIS 128.325	GREAT LAKES APP CON★ 119.2 239.25	BATTLE CREEK TOWER★ 126.825 (CTAF)	GND CON 121.7	UNICOM 122.95
-----------------	--------------------------------------	---------------------------------------	------------------	------------------



ELEV 952	D	TDZE 930
----------	---	----------



3000	XILVY	tr 345°	HEBEL	4 NM Holding Pattern
UWPED 1.8 NM to RW31	WAMOG	ULECO		
RW31	3.00 TCH 40	2500		
1540				
1.8 NM	3 NM	7.2 NM		
CATEGORY	A	B	C	D
LNAV MDA	1320-1	390 (400-1)	1320-1½	390 (400-1½)
CIRCLING	1420-1 468 (500-1)	1480-1 528 (600-1)	1520-1½ 568 (600-1½)	1520-2 568 (600-2)

HIRL Rwy 5L-23R
MIRL Rwys 13-31 and 5R-23L
REIL Rwys 5L, 5R, 13, 23L and 31

BATTLE CREEK, MICHIGAN

Amdt 1A 10SEP20

BATTLE CREEK EXEC AT KELLOGG FLD (BTL)

42°18'N-85°15'W

RNAV (GPS) RWY 31

EC-1, 07 AUG 2025 to 04 SEP 2025

EC-1, 07 AUG 2025 to 04 SEP 2025