

BATTLE CREEK, MICHIGAN

AL-41 (FAA)

25051

WAAS CH 56411 W23A	APP CRS 227°	Rwy Idg 10004 TDZE 929 Apt Elev 952
--	------------------------	--

RNAV (GPS) RWY 23R

BATTLE CREEK EXEC AT KELLOGG FLD (BTL)

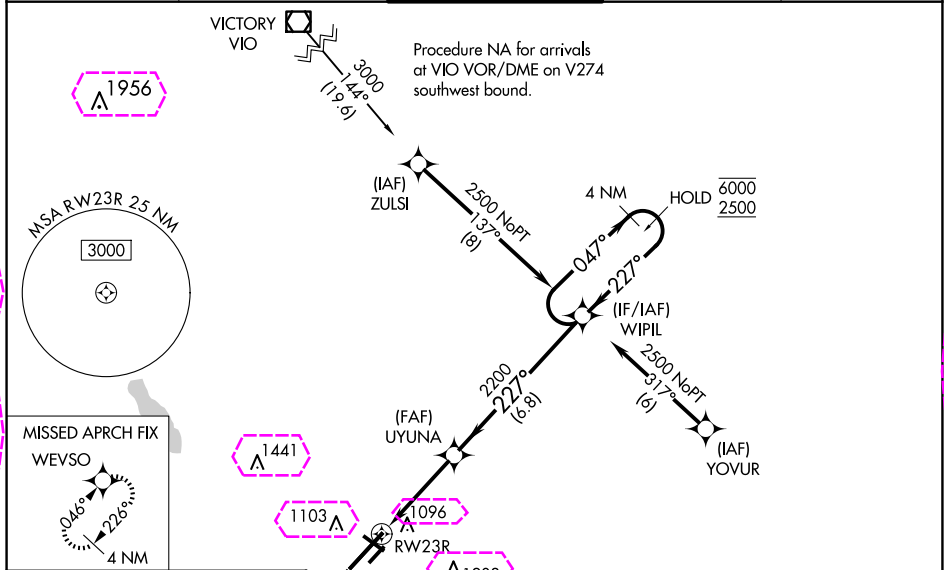
RNP APCH - GPS.

⚠ For uncompensated Baro-VNAV systems, LNAV/VNAV NA below -20°C or above 54°C. Circling to Rwy 5R, 23L and 31 NA at night. When local altimeter setting not received, use Grand Rapids altimeter setting: increase all LPV DA to 1236 feet and LNAV/VNAV DA to 1365 feet and visibility to RVR 5000 all Cats; increase all MDA 120 feet, LNAV Cats C and D visibility to 1¼ SM and Circling Cat C visibility to 2 SM and Cat D visibility to 2½ SM. For inop ALS when using Grand Rapids altimeter setting, increase LPV all Cats visibility to RVR 5000 and LNAV Cats C and D to visibility 1½ SM. Baro-VNAV and VDP NA when using Grand Rapids altimeter setting. *RVR 1800 authorized with use of FD or AP or HUD to DA.

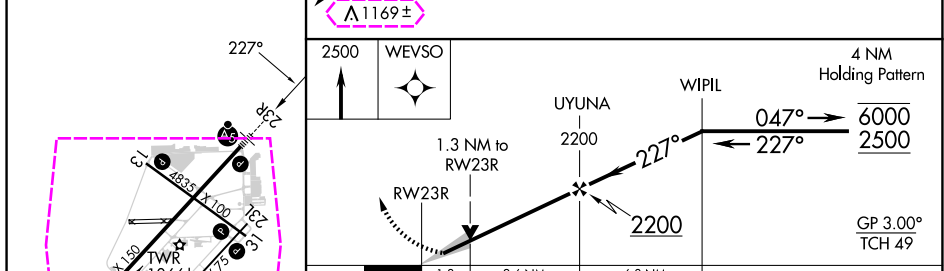
MALSR

MISSED APPROACH: Climb to 2500 direct WEVSO and hold.

ATIS 128.325	GREAT LAKES APP CON* 119.2 239.25	BATTLE CREEK TOWER* 126.825 (CTAF)	GND CON 121.7	UNICOM 122.95
------------------------	---	--	-------------------------	-------------------------



ELEV 952	D	TDZE 929
----------	---	----------



CATEGORY	A	B	C	D
LPV DA *	1129/24		200 (200-½)	
LNAV/VNAV DA	1258/32		329 (400-⅝)	
LNAV MDA	1380/24	451 (500-½)	1380/45	451 (500-⅞)
CIRCLING	1420-1 468 (500-1)	1480-1 528 (600-1)	1520-1½ 568 (600-1½)	1520-2 568 (600-2)

BATTLE CREEK, MICHIGAN
Amdt 1E 21MAR24

BATTLE CREEK EXEC AT KELLOGG FLD (BTL)
RNAV (GPS) RWY 23R

42°18'N-85°15'W

BATTLE CREEK, MICHIGAN

AL-41 (FAA)

25219

WAAS CH 56411 W23A	APP CRS 227°	Rwy Ldg 10004 TDZE 929 Apt Elev 952
--	------------------------	--

RNAV (GPS) RWY 23R

BATTLE CREEK EXEC AT KELLOGG FLD (BTL)

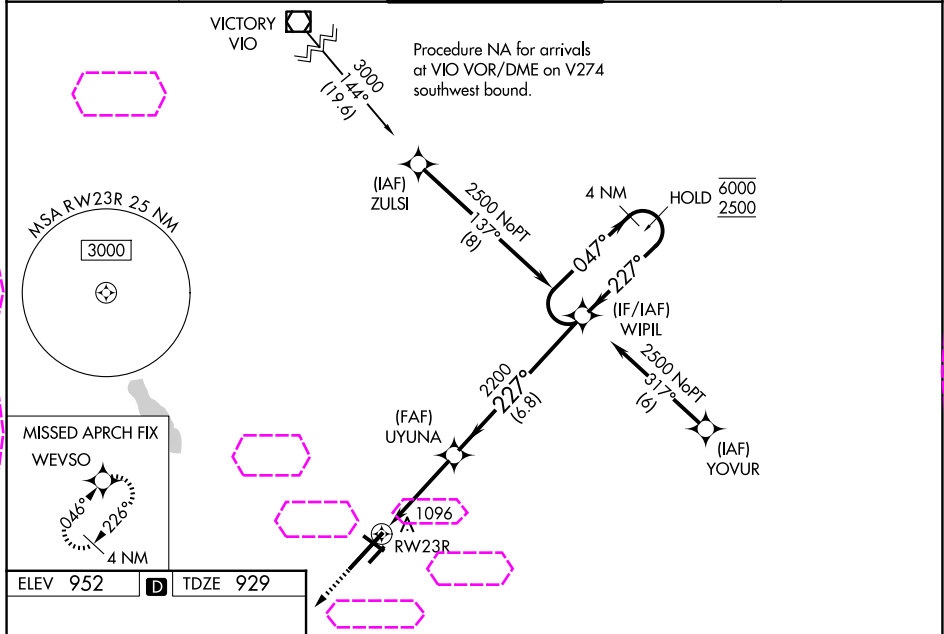
RNP APCH - GPS.

⚠ For uncompensated Baro-VNAV systems, LNAV/VNAV NA below -20°C or above 54°C. Circling to Rwy 5R, 23L and 31 NA at night. When local altimeter setting not received, use Grand Rapids altimeter setting: increase all LPV DA to 1236 feet and LNAV/VNAV DA to 1365 feet and visibility to RVR 5000 all Cats; increase all MDA 120 feet, LNAV Cats C and D visibility to 1¼ SM and Circling Cat C visibility to 2 SM and Cat D visibility to 2½ SM. For inop ALS when using Grand Rapids altimeter setting, increase LPV all Cats visibility to RVR 5000 and LNAV Cats C and D to visibility 1½ SM. Baro-VNAV and VDP NA when using Grand Rapids altimeter setting. *RVR 1800 authorized with use of FD or AP or HUD to DA.

MALSR

MISSED APPROACH: Climb to 2500 direct WEVSO and hold.

ATIS 128.325	GREAT LAKES APP CON★ 119.2 239.25	BATTLE CREEK TOWER★ 126.825 0 (CTAF)	GND CON 121.7	UNICOM 122.95
------------------------	---	--	-------------------------	-------------------------



<div><div><div>2500</div><div>↑</div></div><div><div>WEVSO</div><div></div></div></div>				
<div><div><div>UYUNA</div><div>2200</div></div><div><div>WIPIL</div><div>047° → 6000</div><div>← 227° 2500</div></div><div><div>1.3 NM to RWY23R</div><div>2200</div><div>227°</div><div>2200</div></div><div><div>GP 3.00°</div><div>TCH 49</div></div></div>				
<div><div>1.3</div><div>2.6 NM</div><div>6.8 NM</div></div>				
CATEGORY	A	B	C	D
LPV DA *	1129/24		200 (200-½)	
LNAV/VNAV DA	1258/32		329 (400-⅝)	
LNAV MDA	1380/24	451 (500-½)	1380/45	451 (500-⅞)
CIRCLING	1420-1 468 (500-1)	1480-1 528 (600-1)	1520-1½ 568 (600-1½)	1520-2 568 (600-2)

BATTLE CREEK, MICHIGAN

Amdt 1E 21MAR24

BATTLE CREEK EXEC AT KELLOGG FLD (BTL)

42°18'N-85°15'W

RNAV (GPS) RWY 23R

EC-1, 07 AUG 2025 to 04 SEP 2025

EC-1, 07 AUG 2025 to 04 SEP 2025