

BATON ROUGE, LOUISIANA

AL-40 (FAA)

24305

VORTAC LSU	APP CRS	Rwy Idg	7500
116.5	066°	TDZE	69
Chan 112		Apt Elev	70

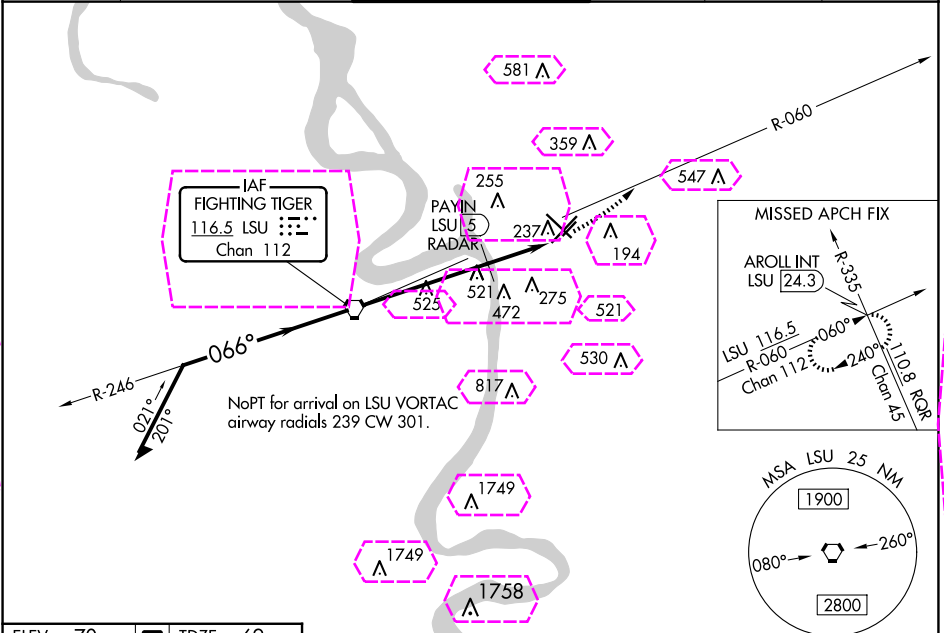
VOR RWY 4L

BATON ROUGE METRO, RYAN FLD (BTR)

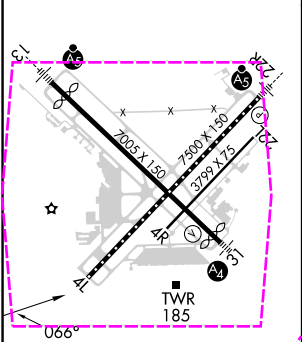
⚠ Helicopter visibility reduction below $\frac{3}{4}$ SM NA. When local altimeter setting not received, use Hammond altimeter setting and increase all MDA 100 feet, increase S-4L Cat A and Circling Cat A and Cat C visibility $\frac{1}{4}$ mile and Circling Cat D visibility $\frac{1}{2}$ mile, PAYIN Fix Minimums: increase S-4L Cats C/D and Circling Cats C/D visibility $\frac{1}{4}$ mile. VDP NA when using Hammond altimeter setting.

MISSED APPROACH: Climb to 2500 on LSU VORTAC R-060 to AROLL INT/LSU 24.3 DME and hold.

ATIS	BATON ROUGE APP CON ★	RYAN TOWER ★	GND CON	CLNC DEL	UNICOM
125.2	120.3 278.3	118.45 (CTAF) 257.8	121.9	119.4	122.95



ELEV 70	TDZE 69
---------	---------



TDR/CL Rwy 22R					
HIRL Rwy 13-31 and 4L-22R					
MIRL Rwy 4R-22L					
FAF to MAP 7.5 NM					
Knots	60	90	120	150	180
Min:Sec	7:30	5:00	3:45	3:00	2:30

BATON ROUGE, LOUISIANA
Amdt 18A 15OCT15

Remain within 10 NM			
LSU VORTAC			
2500			
2500			
*960 when using Hammond altimeter setting.			
CATEGORY	A	B	C D
S-4L	860-1 791 (800-1)	860-1 $\frac{1}{4}$ 791 (800-1 $\frac{1}{4}$)	860-2 $\frac{1}{2}$ 791 (800-2 $\frac{1}{2}$)
CIRCLING	860-1 790 (800-1)	860-1 $\frac{1}{4}$ 790 (800-1 $\frac{1}{4}$)	860-2 $\frac{1}{2}$ 790 (800-2 $\frac{1}{2}$)
PAYIN FIX MINIMUMS			
S-4L	640-1 571 (600-1)	640-1 $\frac{5}{8}$ 571 (600-1 $\frac{5}{8}$)	
CIRCLING	640-1 570 (600-1)	660-1 590 (600-1)	780-2 840-2 $\frac{1}{2}$ 710 (800-2) 770 (800-2 $\frac{1}{2}$)

BATON ROUGE METRO, RYAN FLD (BTR)

VOR RWY 4L

30°32'N-91°09'W

BATON ROUGE, LOUISIANA

AL-40 (FAA)

25219

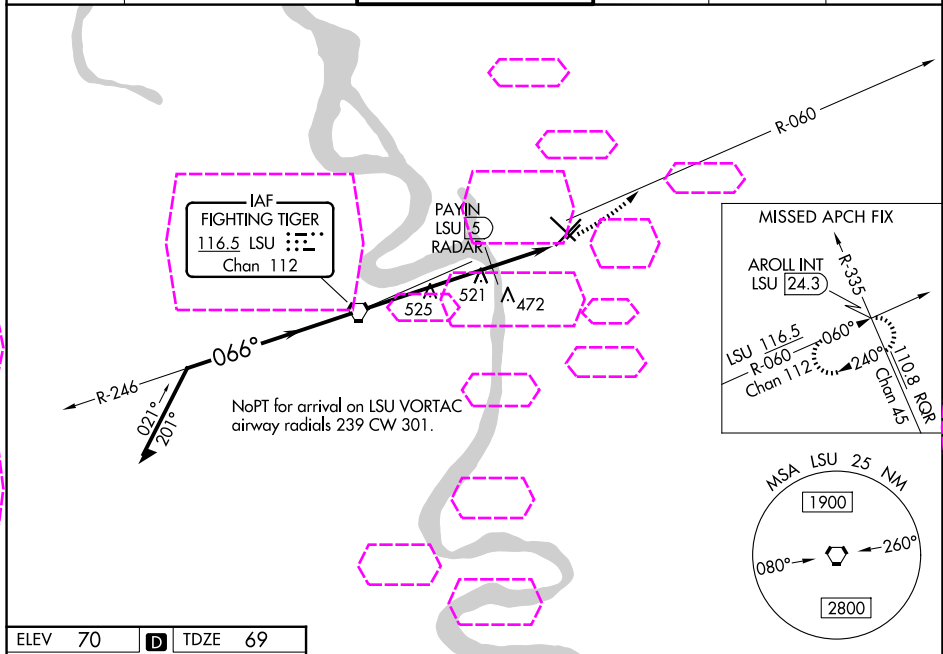
VORTAC LSU	APP CRS	Rwy Ldg	7500
116.5	066°	TDZE	69
Chan 112		Apt Elev	70

VOR RWY 4L

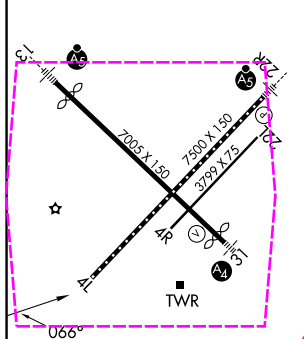
BATON ROUGE METRO, RYAN FLD (BTR)

<p>⚠ Helicopter visibility reduction below $\frac{3}{4}$ SM NA. When local altimeter setting not received, use Hammond altimeter setting and increase all MDA 100 feet, increase S-4L Cat A and Circling Cat A and Cat C visibility $\frac{1}{4}$ mile and Circling Cat D visibility $\frac{1}{2}$ mile, PAYIN Fix Minimums: increase S-4L Cats C/D and Circling Cats C/D visibility $\frac{1}{4}$ mile. VDP NA when using Hammond altimeter setting.</p>	<p>MISSED APPROACH: Climb to 2500 on LSU VORTAC R-060 to AROLL INT/LSU 24.3 DME and hold.</p>
--	---

ATIS 125.2	BATON ROUGE APP CON ★ 120.3 278.3	RYAN TOWER ★ 118.45 (CTAF) 257.8	GND CON 121.9	CLNC DEL 119.4	UNICOM 122.95
---------------	--------------------------------------	-------------------------------------	------------------	-------------------	------------------



ELEV 70	TDZE 69
---------	---------



TDZ/CL Rwy 22R					
HIRL Rwy 13-31 and 4L-22R					
MIRL Rwy 4R-22L					
FAF to MAP 7.5 NM					
Knots	60	90	120	150	180
Min:Sec	7:30	5:00	3:45	3:00	2:30

Remain within 10 NM			
LSU VORTAC			
2500			
2500			
*960 when using Hammond altimeter setting.			
5 NM			
0.8 1.6			
CATEGORY	A	B	C D
S-4L	860-1 791 (800-1)	860-1 $\frac{1}{4}$ 791 (800-1 $\frac{1}{4}$)	860-2 $\frac{1}{2}$ 791 (800-2 $\frac{1}{2}$)
CIRCLING	860-1 790 (800-1)	860-1 $\frac{1}{4}$ 790 (800-1 $\frac{1}{4}$)	860-2 $\frac{1}{2}$ 790 (800-2 $\frac{1}{2}$)
PAYIN FIX MINIMUMS			
S-4L	640-1 571 (600-1)	640-1 $\frac{5}{8}$ 571 (600-1 $\frac{5}{8}$)	
CIRCLING	640-1 570 (600-1)	660-1 590 (600-1)	780-2 710 (800-2) 840-2 $\frac{1}{2}$ 770 (800-2 $\frac{1}{2}$)

BATON ROUGE, LOUISIANA

Amdt 18A 15OCT15

BATON ROUGE METRO, RYAN FLD (BTR)

30°32'N-91°09'W

VOR RWY 4L

SC-4, 07 AUG 2025 to 04 SEP 2025

SC-4, 07 AUG 2025 to 04 SEP 2025