

24305

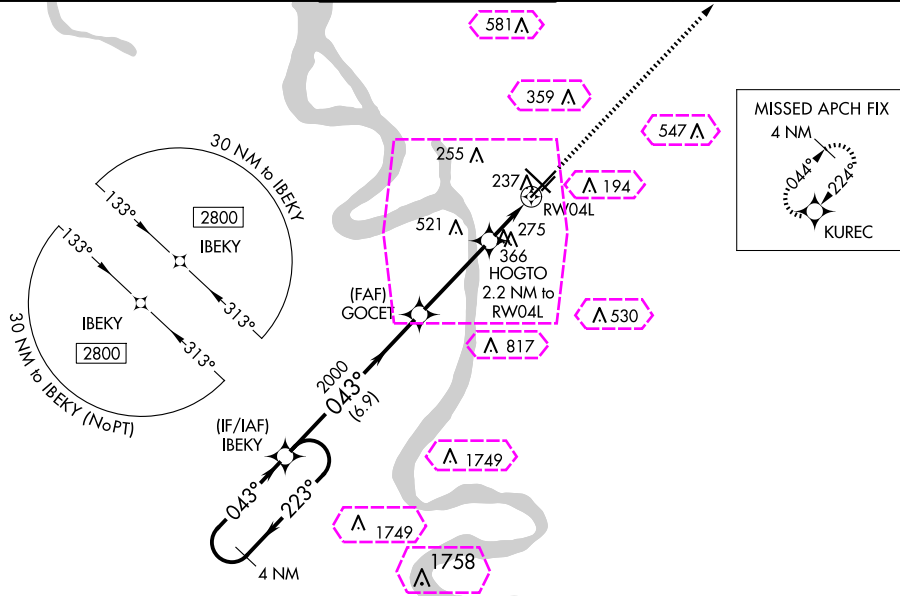
WAAS CH 81825 W04A	APP CRS 043°	Rwy Idg 7500 TDZE 69 Apt Elev 70
--	------------------------	---

RNAV (GPS) RWY 4L
BATON ROUGE METRO. RYAN FLD. (BTR)

▲ For uncompensated Baro-VNAV systems, LNAV/VNAV NA below -5°C (23°F) or above 54°C (130°F).
▲ DME/DME RNP-0.3 NA. Baro-VNAV and VDP NA when using Hammond altimeter setting. When local altimeter setting not received, use Hammond altimeter setting and increase all DA 91 feet and all MDA 100 feet; increase LPV visibility ¼ mile all Cats, LNAV/VNAV visibility ½ mile all Cats and LNAV Cat C/D visibility ¼ mile, Circling Cat C/D visibility ¼ mile. Helicopter visibility reduction below ¾ SM NA.

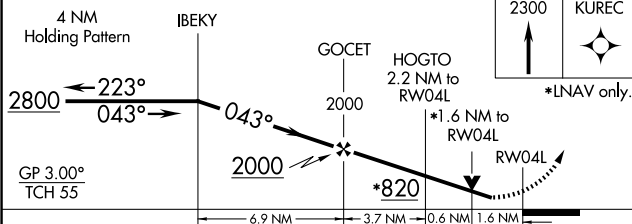
MISSED APPROACH:
Climb to 2300 direct
KUREC and hold.


ATIS	BATON ROUGE APP CON★		RYAN TOWER★	GND CON	CLNC DEL	UNICOM
125.2	120.3	278.3	118.45 (CTAF) 0 257.8	121.9	119.4	122.95

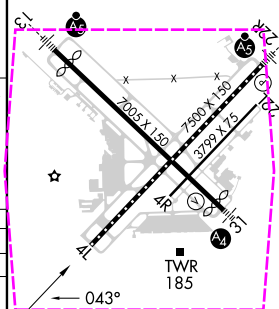


MISSED APCH FIX
4 NM
044°
224°
KUREC

ELEV 70		TDZE 69
---------	---	---------



CATEGORY		A	B	C	D
LPV	DA	345- $\frac{7}{8}$ 276 (300- $\frac{7}{8}$)			
LNAV/ VNAV	DA	656-2 587 (600-2)			
LNAV	MDA	620-1 551 (600-1)		620-1 $\frac{5}{8}$ 551 (600-1 $\frac{5}{8}$)	
 CIRCLING		620-1 550 (600-1)	660-1 590 (600-1)	780-2 710 (800-2)	840-2 $\frac{1}{2}$ 770 (800-2 $\frac{1}{2}$)



TDZ/CL Rwy 22R
HIRL Rwy 13-31 and 4L-22R **L**
MIRL Rwy 4R-22L

BATON ROUGE, LOUISIANA
Amdt 3 20AUG15

BATON ROUGE METRO, RYAN FLD (BTR)
RNAV (GPS) RWY 4L

30°32'N-91°09'W

BATON ROUGE, LOUISIANA

AL-40 (FAA)

25219

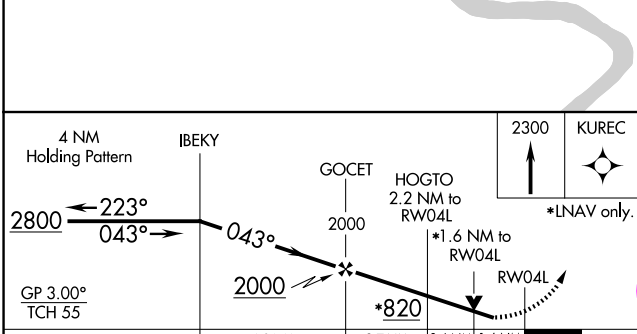
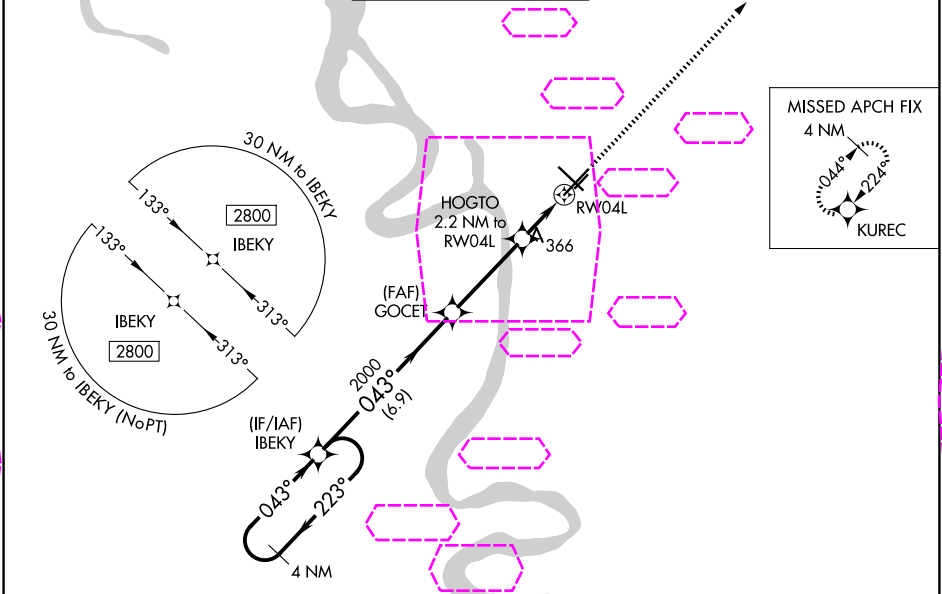
WAAS CH 81825 W04A	APP CRS 043°	Rwy Ldg 7500 TDZE 69 Apt Elev 70
--	------------------------	---

RNAV (GPS) RWY 4L
BATON ROUGE METRO, RYAN FLD (BTR)

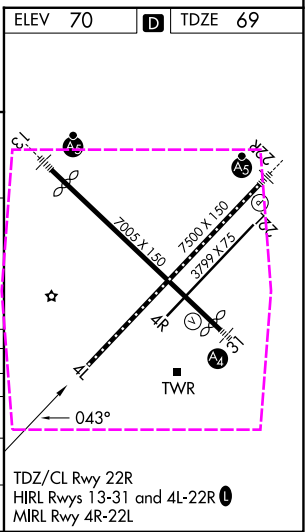
⚠ For uncompensated Baro-VNAV systems, LNAV/VNAV NA below -5°C (23°F) or above 54°C (130°F).
⚠ DME/DME RNP-0.3 NA. Baro-VNAV and VDP NA when using Hammond altimeter setting. When local altimeter setting not received, use Hammond altimeter setting and increase all DA 91 feet and all MDA 100 feet; increase LPV visibility ¼ mile all Cats, LNAV/VNAV visibility ½ mile all Cats and LNAV Cat C/D visibility ¼ mile, Circling Cat C/D visibility ¼ mile. Helicopter visibility reduction below ¾ SM NA.

MISSED APPROACH: Climb to 2300 direct KUREC and hold.

ATIS 125.2	BATON ROUGE APP CON★ 120.3 278.3	RYAN TOWER★ 118.45 (CTAF) 257.8	GND CON 121.9	CLNC DEL 119.4	UNICOM 122.95
----------------------	--	---	-------------------------	--------------------------	-------------------------



CATEGORY	A	B	C	D
LPV DA	345-7/8 276 (300-7/8)			
LNAV/VNAV DA	656-2 587 (600-2)			
LNAV MDA	620-1 551 (600-1)	620-15/8 551 (600-15/8)		
CIRCLING	620-1 550 (600-1)	660-1 590 (600-1)	780-2 710 (800-2)	840-2 1/2 770 (800-2 1/2)



BATON ROUGE, LOUISIANA
Amdt 3 20AUG15

30°32'N-91°09'W

BATON ROUGE METRO, RYAN FLD (BTR)
RNAV (GPS) RWY 4L