

Baton Rouge, Louisiana

WAAS CH 90125 W31A	APP CRS 314°	Rwy Idg 6094 TDZE 69 Apt Elev 70
--	------------------------	---

RNAV (GPS) RWY 31

BATON ROUGE METRO, RYAN FLD (BTR)

RNP APCH.

T For uncompensated Baro-VNAV systems, LNAV/VNAV NA below -5°C (23°F) or above 54°C (130°F). For inop MALS, increase LNAV Cat C/D visibility to 1½ mile. When local altimeter setting not received, use Hammond altimeter setting and increase all DA 91 feet and MDA 100 feet, increase LPV and LNAV/VNAV all Cats visibility ¾ mile, LNAV Cats C and D visibility ¾ mile, and Circling Cat C and D visibility ½ mile. Baro-VNAV and VDP NA when using Hammond altimeter setting. Rwy 31 helicopter visibility reduction below ¾ SM NA.


MALS

A_4

MISSED APPROACH:
Climb to 2000 direct
BOYAG and hold.

ATIS 125.2	BATON ROUGE APP CON★ 120.3 278.3	RYAN TOWER★ 118.45 (CTAF) 0 257.8	GND CON 121.9	CLNC DEL 119.4	UNICOM 122.95
---------------	-------------------------------------	--------------------------------------	------------------	-------------------	------------------

MISSED APCH FIX

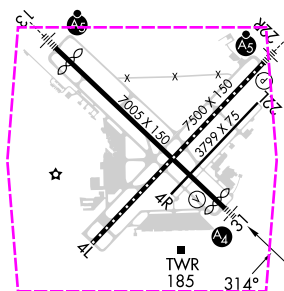
FIGHTING TIGER
LSU 

MSA RPT-25 NM

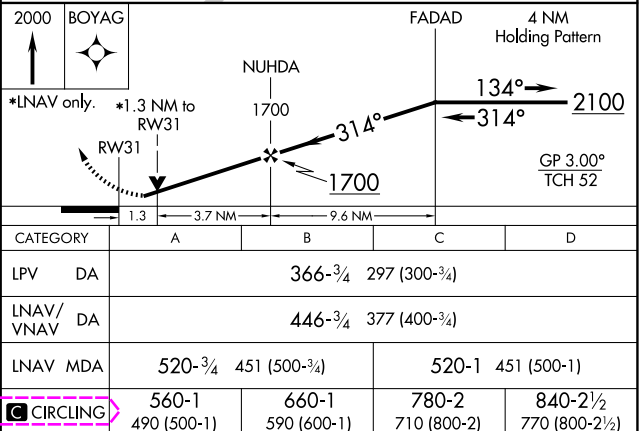
2800

ELEV 70

D	TDZE	69
---	------	----



TDZ/CL Rwy 22R
HIRL Rwys 13-31 and 4L-22R **L**
MIRL Rwy 4R-22L



Baton Rouge, Louisiana

Amdt 2A 11OCT18

Baton Rouge Metro. Ryan FLD (BTR)

30°32'N-91°09'W

RNAV (GPS) RWY 31

SC-4, 10 JUL 2025 to 07 AUG 2025

SC-4, 10 JUL 2025 to 07 AUG 2025

BATON ROUGE, LOUISIANA

AL-40 (FAA)

25219

WAAS CH 90125 W31A	APP CRS 314°	Rwy Ldg TDZE 69 Apt Elev 70
--	------------------------	---

RNAV (GPS) RWY 31

BATON ROUGE METRO, RYAN FLD (BTR)

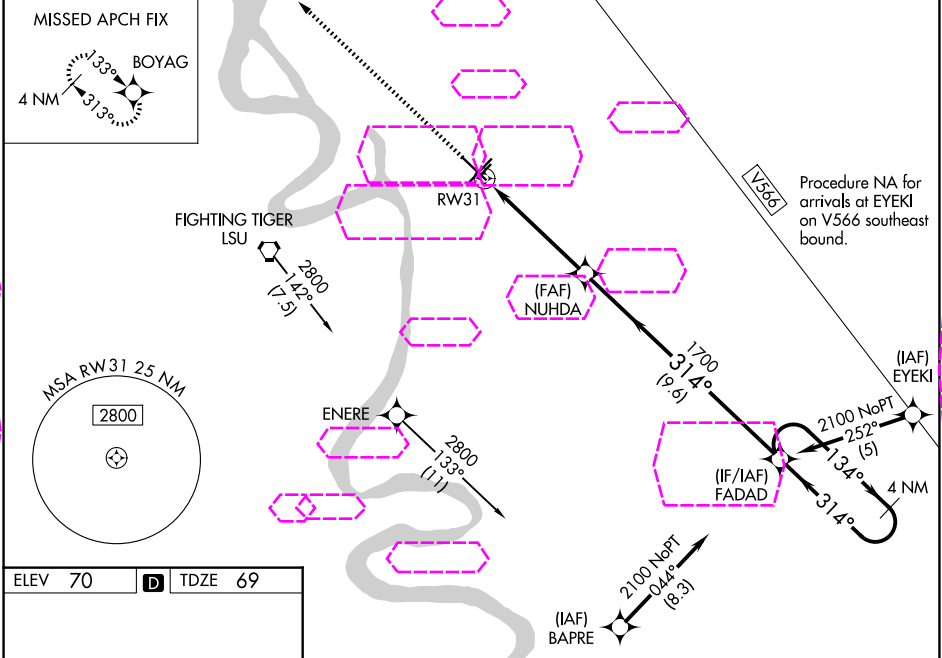
RNP APCH.

For uncompensated Baro-VNAV systems, LNAV/VNAV NA below -5°C (23°F) or above 54°C (130°F). For inop MALS, increase LNAV Cat C/D visibility to 1 3/8 mile. When local altimeter setting not received, use Hammond altimeter setting and increase all DA 91 feet and MDA 100 feet, increase LPV and LNAV/VNAV all Cats visibility 3/8 mile, LNAV Cats C and D visibility 3/8 mile, and Circling Cat C and D visibility 1/4 mile. Baro-VNAV and VDP NA when using Hammond altimeter setting. Rwy 31 helicopter visibility reduction below 3/4 SM NA.

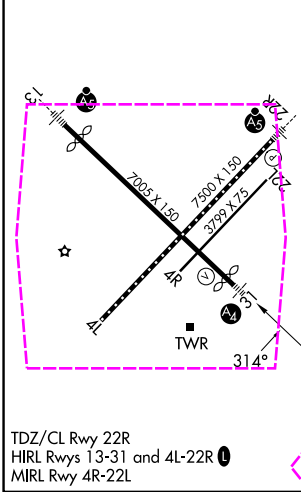
MALS


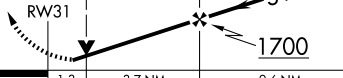
MISSED APPROACH:
Climb to 2000 direct BOYAG and hold.

ATIS 125.2	BATON ROUGE APP CON ★ 120.3 278.3	RYAN TOWER ★ 118.45 (CTAF) 257.8	GND CON 121.9	CLNC DEL 119.4	UNICOM 122.95
----------------------	---	--	-------------------------	--------------------------	-------------------------



ELEV 70	D	TDZE 69
----------------	----------	----------------



2000 ↑	BOYAG 	FADAD		4 NM Holding Pattern
*LNAV only.		*1.3 NM to RW31	NUHDA 1700	134° → ← 314° <u>2100</u> GP 3.00° TCH 52
		1.3	3.7 NM	9.6 NM
CATEGORY	A	B	C	D
LPV DA	366-¾ 297 (300-¾)			
LNAV/ VNAV	446-¾ 377 (400-¾)			
LNAV MDA	520-¾ 451 (500-¾)	520-1 451 (500-1)		
CIRCLING	560-1 490 (500-1)	660-1 590 (600-1)	780-2 710 (800-2)	840-2½ 770 (800-2½)

BATON ROUGE, LOUISIANA
Amdt 2A 11OCT18

30°32'N-91°09'W

BATON ROUGE METRO, RYAN FLD (BTR)

RNAV (GPS) RWY 31

SC-4, 07 AUG 2025 to 04 SEP 2025

SC-4, 07 AUG 2025 to 04 SEP 2025