

BATON ROUGE, LOUISIANA

AL-40 (FAA)

24305

WAAS CH 86225 W22A	APP CRS 224°	Rwy Idg 7500 TDZE 70 Apt Elev 70
--	------------------------	---

RNAV (GPS) RWY 22R

BATON ROUGE METRO, RYAN FLD (BTR)

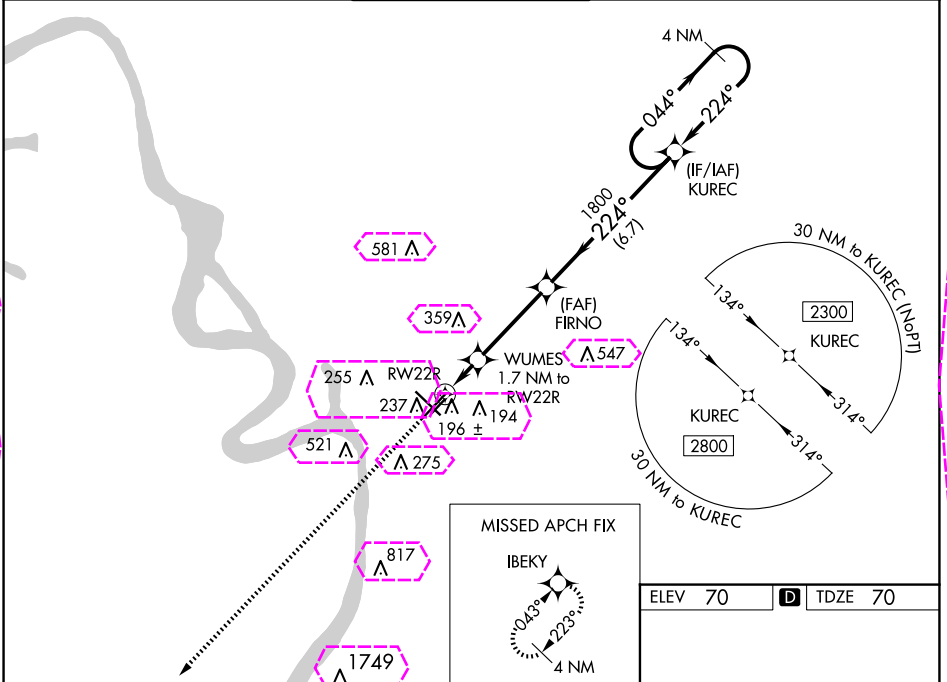
Baro-VNAV NA when using Hammond altimeter setting. For uncompensated Baro-VNAV systems, LNAV/VNAV NA below -5°C (23°F) or above 54°C (130°F). DME/DME RNP-0.3 NA. VDP NA with Hammond altimeter setting. When local altimeter setting not received, use Hammond altimeter setting and increase all DA 91 feet, and all MDA 100 feet; increase LNAV/VNAV all Cats visibility 3/8 mile, LNAV Cat C/D visibility to RVR 5000, and Circling Cat C/D visibility 1/4 mile. For inop MALS when using Hammond altimeter setting, increase LPV all Cats visibility to RVR 4500, and LNAV C/D visibility to 1 1/8 mile.


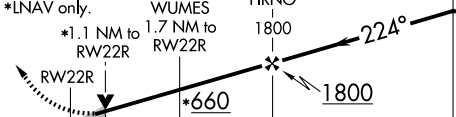
MALS

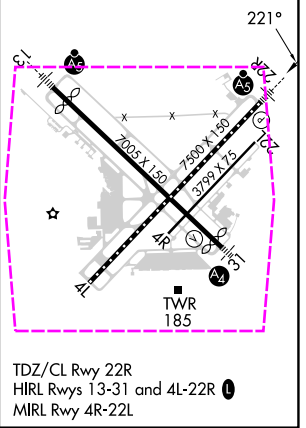
A5

MISSED APPROACH:
Climb to 2800 direct IBEKY and hold.

ATIS 125.2	BATON ROUGE APP CON ★ 120.3 278.3	RYAN TOWER ★ 118.45 (CTAF) 0 257.8	GND CON 121.9	CLNC DEL 119.4	UNICOM 122.95
----------------------	---	--	-------------------------	--------------------------	-------------------------



2800 ↑	IBEKY 	KUREC 4 NM Holding Pattern			
*LNAV only.	WUMES 1.7 NM to RW22R	FIRNO 1800	224°	044° → 2300 ← 224°	GP 3.00° TCH 55
					
CATEGORY	A	B	C	D	
LPV DA	270/18		200 (200-½)		
LNAV/ VNAV DA	486/45		416 (500-¾)		
LNAV MDA	460/24	390 (400-½)	460/35	390 (400-¾)	
CIRCLING	560-1 490 (500-1)	660-1 590 (600-1)	780-2 710 (800-2)	840-2½ 770 (800-2½)	



BATON ROUGE, LOUISIANA
Amdt 3A 17AUG17

30°32'N-91°09'W

BATON ROUGE METRO, RYAN FLD (BTR)
RNAV (GPS) RWY 22R

BATON ROUGE, LOUISIANA

AL-40 (FAA)

25219


WAAS CH 86225 W22A	APP CRS 224°	Rwy Ldg 7500 TDZE 70 Apt Elev 70
--	------------------------	---

RNAV (GPS) RWY 22R

BATON ROUGE METRO, RYAN FLD (BTR)

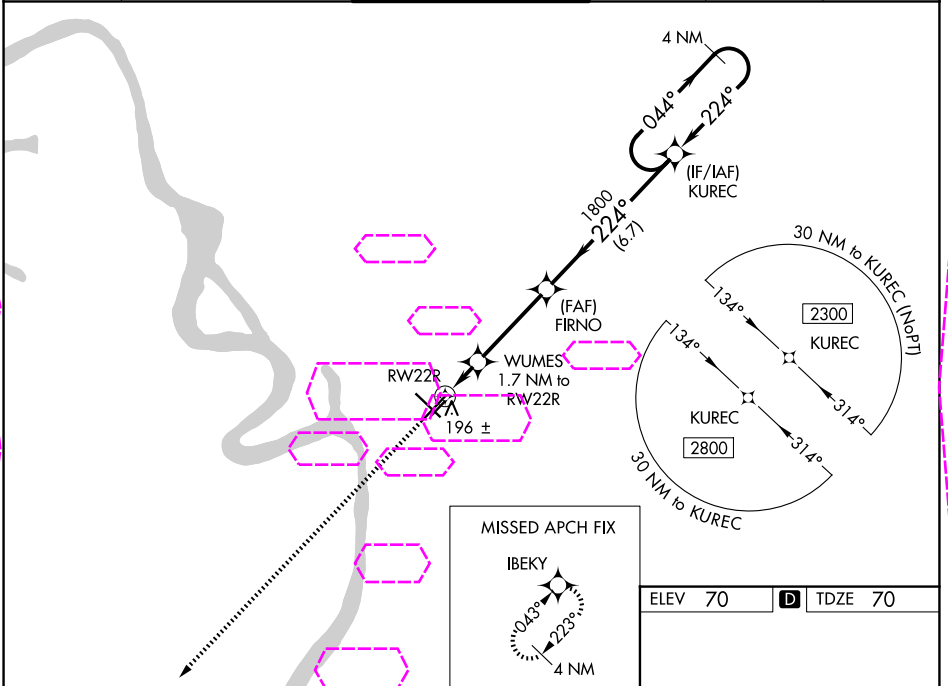
⚠ Baro-VNAV NA when using Hammond altimeter setting. For uncompensated Baro-VNAV systems, LNAV/VNAV NA below -5°C (23°F) or above 54°C (130°F). DME/DME RNP-0.3 NA. VDP NA with Hammond altimeter setting. When local altimeter setting not received, use Hammond altimeter setting and increase all DA 91 feet, and all MDA 100 feet; increase LNAV/VNAV all Cats visibility 3/8 mile, LNAV Cat C/D visibility to RVR 5000, and Circling Cat C/D visibility 1/4 mile. For inop MALS R when using Hammond altimeter setting, increase LPV all Cats visibility to RVR 4500, and LNAV C/D visibility to 1 1/8 mile.


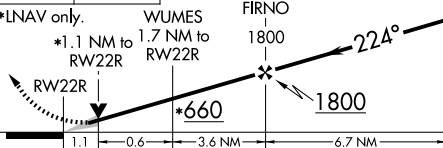
MALS R

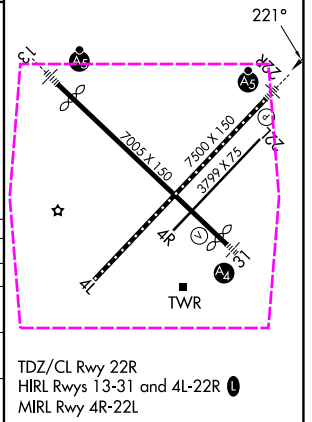


MISSED APPROACH:
Climb to 2800 direct IBEKY and hold.

ATIS 125.2	BATON ROUGE APP CON ★ 120.3 278.3	RYAN TOWER ★ 118.45 (CTAF) 0 257.8	GND CON 121.9	CLNC DEL 119.4	UNICOM 122.95
----------------------	---	--	-------------------------	--------------------------	-------------------------



2800 ↑	IBEKY 	4 NM Holding Pattern KUREC			
*LNAV only. *1.1 NM to RW22R		WUMES 1.7 NM to RW22R	FIRNO 1800	044° → 2300 ← 224°	GP 3.00° TCH 55
					
CATEGORY	A	B	C	D	
LPV DA	270/18		200 (200-½)		
LNAV/ VNAV	486/45		416 (500-¾)		
LNAV MDA	460/24	390 (400-½)	460/35	390 (400-¾)	
CIRCLING	560-1 490 (500-1)	660-1 590 (600-1)	780-2 710 (800-2)	840-2½ 770 (800-2½)	



BATON ROUGE, LOUISIANA
Amdt 3A 17AUG17

30°32'N-91°09'W

BATON ROUGE METRO, RYAN FLD (BTR)
RNAV (GPS) RWY 22R

SC-4, 07 AUG 2025 to 04 SEP 2025

SC-4, 07 AUG 2025 to 04 SEP 2025