

BATON ROUGE, LOUISIANA

AL-40 (FAA)

24305

WAAS CH 72817 W13A	APP CRS 133°	Rwy Idg 5720 TDZE 67 Apt Elev 70
--	------------------------	---

RNAV (GPS) RWY 13

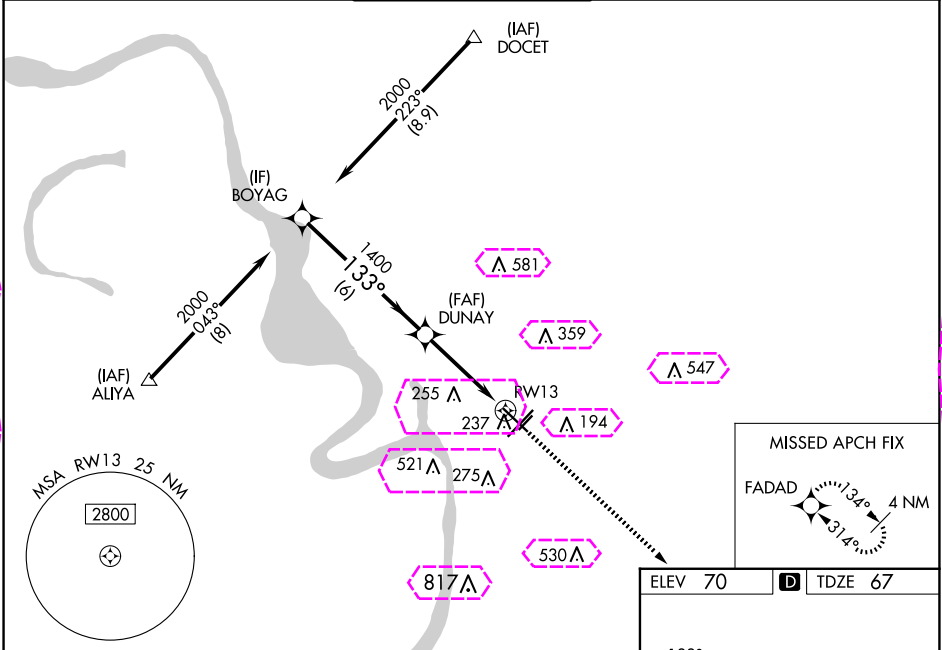
BATON ROUGE METRO, RYAN FLD (BTR)

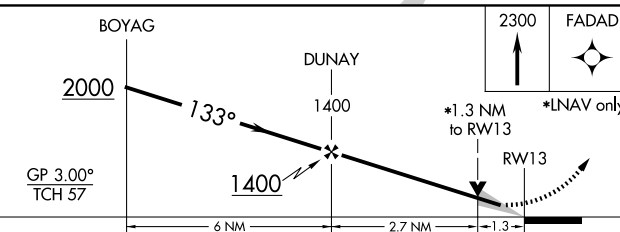
▽ For uncompensated Baro-VNAV systems, LNAV/VNAV NA below -5°C (23°F) or above 54°C (130°F). DME/DME RNP-0.3 NA. When local altimeter setting not received, use Hammond altimeter setting and increase all DA 91 feet and all MDA 100 feet, and increase LNAV/VNAV all Cats visibility ¼ mile, and LNAV Cats C and D visibility ⅜ mile. For inop MALS when using Hammond altimeter setting, increase LPV all Cats visibility to ⅜ mile, LNAV Cat C and D visibility to 1 ⅜ mile. Baro-VNAV and VDP NA when using Hammond altimeter setting.

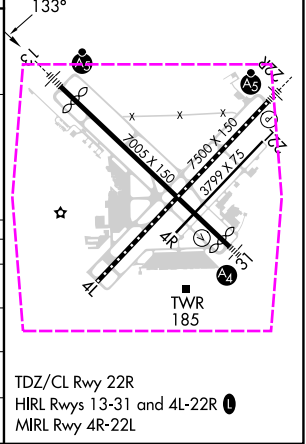
MALS

MISSED APPROACH: Climb to 2300 direct FADAD and hold.

ATIS 125.2	BATON ROUGE APP CON ★ 120.3 278.3	RYAN TOWER ★ 118.45 (CTAF) 0 257.8	GND CON 121.9	CLNC DEL 119.4	UNICOM 122.95
----------------------	---	--	-------------------------	--------------------------	-------------------------



				
CATEGORY	A	B	C	D
LPV DA	267-½		200 (200-½)	
LNAV/VNAV DA	465-⅞		398 (400-⅞)	
LNAV MDA	540-½ 473 (500-½)		540-1 473 (500-1)	
CIRCLING	560-1 490 (500-1)	660-1 590 (600-1)	780-2 710 (800-2)	840-2½ 770 (800-2½)



BATON ROUGE, LOUISIANA

Amtd 2 20AUG15

BATON ROUGE METRO, RYAN FLD (BTR)

30°32'N-91°09'W

RNAV (GPS) RWY 13

BATON ROUGE, LOUISIANA

AL-40 (FAA)

25219


WAAS CH 72817 W13A	APP CRS 133°	Rwy Ldg 5720 TDZE 67 Apt Elev 70
--	------------------------	---

RNAV (GPS) RWY 13

BATON ROUGE METRO, RYAN FLD (BTR)

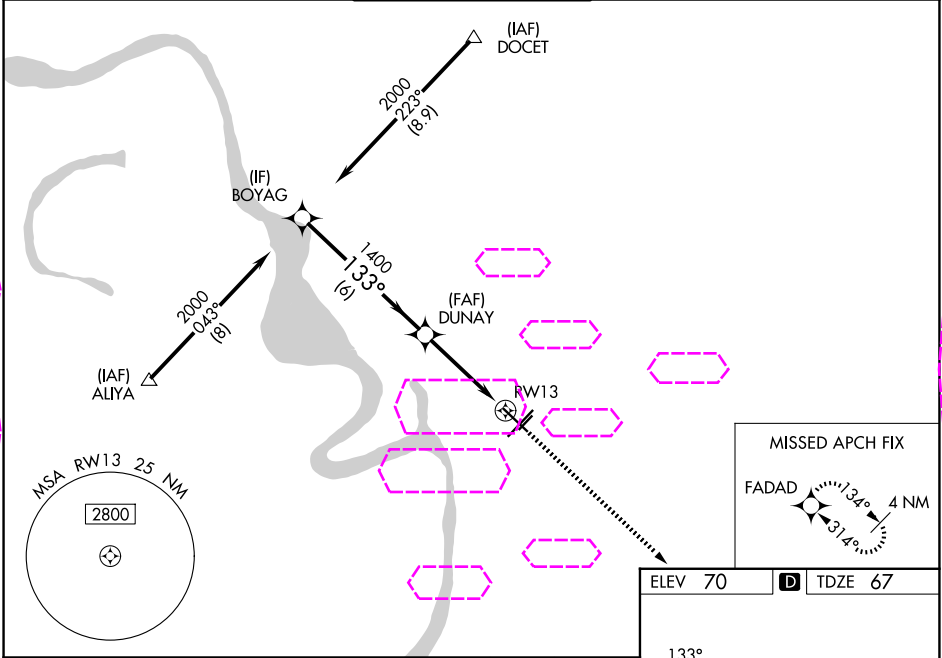
⚠ For uncompensated Baro-VNAV systems, LNAV/VNAV NA below -5°C (23°F) or above 54°C (130°F). DME/DME RNP-0.3 NA. When local altimeter setting not received, use Hammond altimeter setting and increase all DA 91 feet and all MDA 100 feet, and increase LNAV/VNAV all Cats visibility 1/4 mile, and LNAV Cats C and D visibility 3/8 mile. For inop MALS when using Hammond altimeter setting, increase LPV all Cats visibility to 3/8 mile, LNAV Cat C and D visibility to 1/2 mile. Baro-VNAV and VDP NA when using Hammond altimeter setting.

MALS

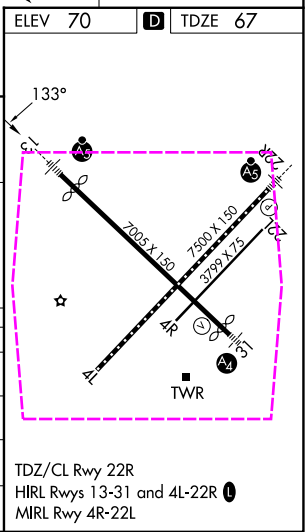


MISSED APPROACH: Climb to 2300 direct FADAD and hold.

ATIS 125.2	BATON ROUGE APP CON ★ 120.3 278.3	RYAN TOWER ★ 118.45 (CTAF) 0 257.8	GND CON 121.9	CLNC DEL 119.4	UNICOM 122.95
----------------------	---	--	-------------------------	--------------------------	-------------------------



BOYAG		DUNAY		2300	FADAD
2000		1400		*1.3 NM to RWY 13	
GP 3.00°		1400		*LNAV only.	
TCH 57		RWY 13			
6 NM		2.7 NM		1.3	
CATEGORY	A	B	C	D	
LPV DA		267-1/2	200 (200-1/2)		
LNAV/VNAV DA		465-7/8	398 (400-7/8)		
LNAV MDA	540-1/2	473 (500-1/2)	540-1	473 (500-1)	
CIRCLING	560-1 490 (500-1)	660-1 590 (600-1)	780-2 710 (800-2)	840-2 1/2 770 (800-2 1/2)	



BATON ROUGE, LOUISIANA

Amtd 2 20AUG15

BATON ROUGE METRO, RYAN FLD (BTR)

30°32'N-91°09'W

RNAV (GPS) RWY 13