

| | | |
|---|------------------------|---|
| LOC/DME I-CLZ 108.7 Chan 24 | APP CRS 223° | Rwy Idg 7500 TDZE 70 Apt Elev 70 |
|---|------------------------|---|

ILS or LOC/DME RWY 22R

Baton Rouge Metro, Ryan FLD (BTR)

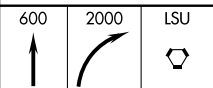
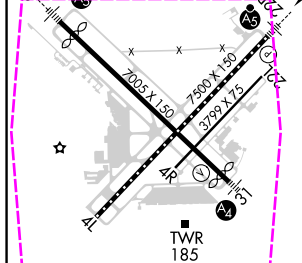
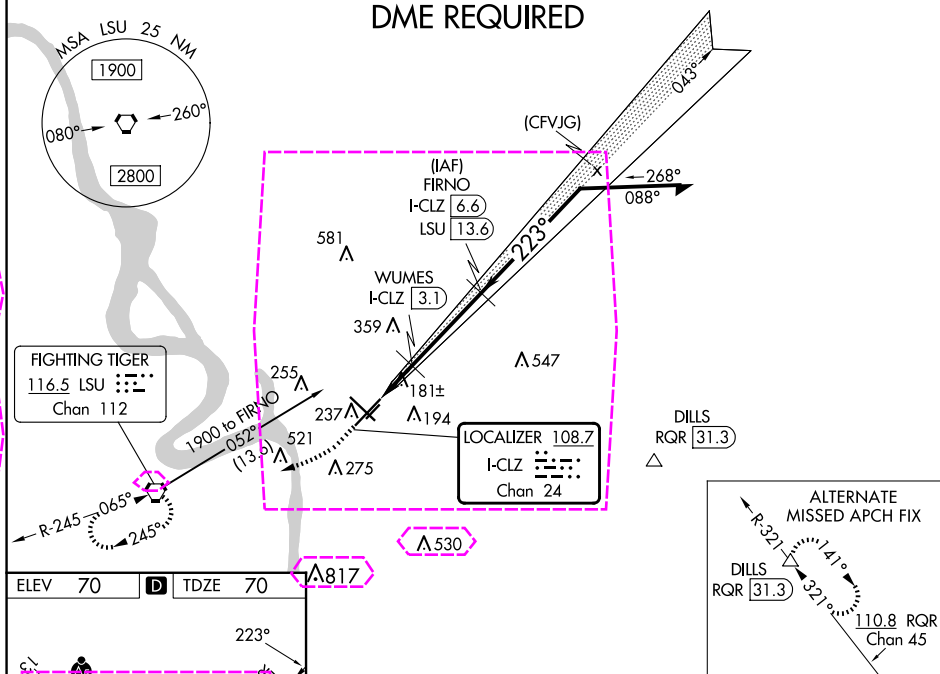
V When local altimeter setting not received, use Hammond altimeter setting and increase all
A DA 91 feet and all MDA 100 feet; increase S-ILS 22R all Cats visibility to RVR 2200; increase
S-LOC 22R Cat C/D visibility to RVR 5000. For inop MALS/R when using Hammond altimeter
setting, increase S-ILS 22R all Cats visibility to RVR 4500, and S-LOC 22R Cat C/D visibility to
1/2 mile. For inop MALS/R, increase S-LOC 22R Cat C/D visibility to RVR 5500.
VDP NA with Hammond altimeter setting.



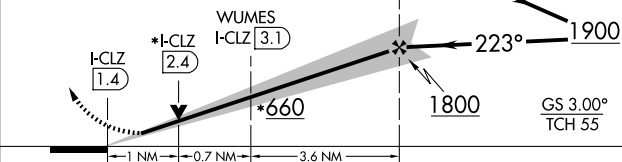
MISSED APPROACH:
Climb to 600 then
climbing right turn to
2000 direct LSU
VORTAC and hold.


| | | | | | |
|---------------|--------------------------------------|---------------------------------------|------------------|-------------------|------------------|
| ATIS 125.2 | BATON ROUGE APP CON ★ 120.3 278.3 | RYAN TOWER ★ 118.45 (CTAF) 0 257.8 | GND CON 121.9 | CLNC DEL 119.4 | UNICOM 122.95 |
|---------------|--------------------------------------|---------------------------------------|------------------|-------------------|------------------|

DME REQUIRED



*LOC only.



| CATEGORY | A | B | C | D |
|--|----------------------|----------------------|----------------------|------------------------|
| S-ILS 22R | 270/18 200 (200-½) | | | |
| S-LOC 22R | 440/24 | 370 (400-½) | 440/35 | 370 (400-¾) |
|  CIRCLING | 560-1 490 (500-1) | 660-1 590 (600-1) | 780-2 710 (800-2) | 840-2½ 770 (800-2½) |

TDZ/CL Rwy 22R
HIRL Rwy 13-31 and 4L-22R **L**
MIRL Rwy 4R-22L

Baton Rouge, Louisiana

Amdt 12A 04FEB16

Baton Rouge Metro, Ryan FLD (BTR)

30°32'N-91°09'W

ILS or LOC/DME RWY 22R

BATON ROUGE, LOUISIANA

AL-40 (FAA)


25219

| | | |
|---|------------------------|---|
| LOC/DME I-CLZ 108.7 Chan 24 | APP CRS 223° | Rwy Ldg 7500 TDZE 70 Apt Elev 70 |
|---|------------------------|---|

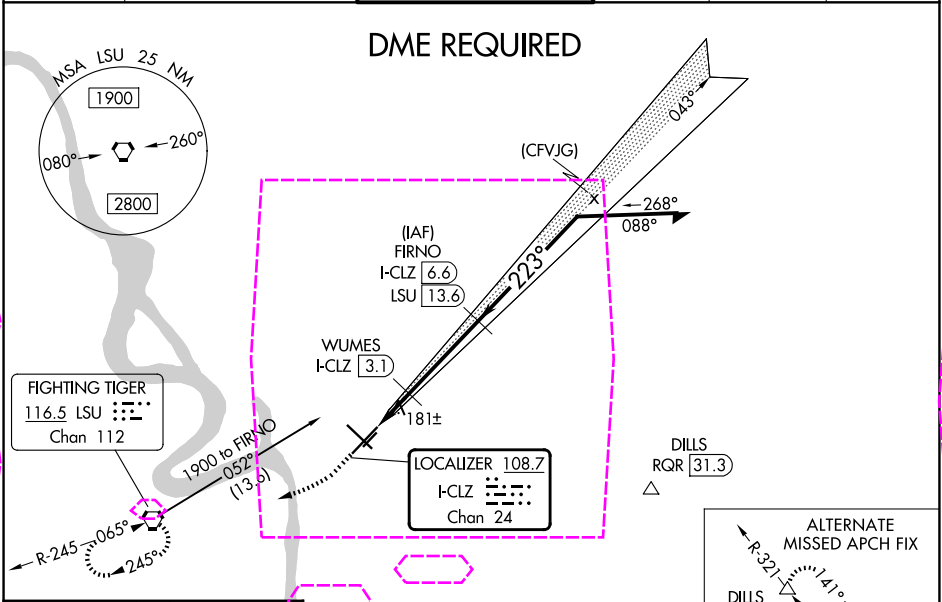
ILS or LOC/DME RWY 22R

BATON ROUGE METRO, RYAN FLD (BTR)

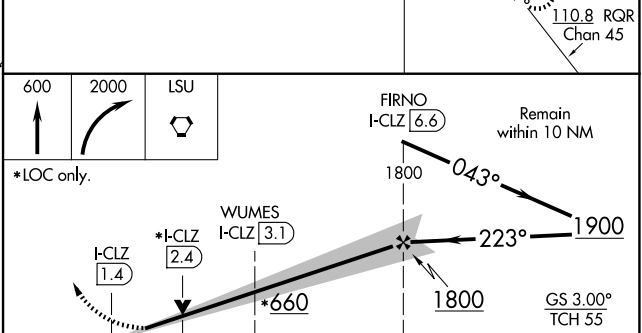
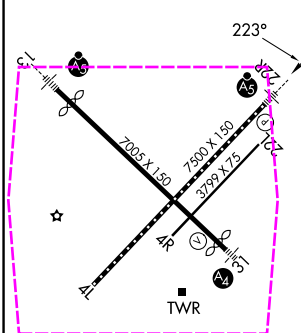
⚠ When local altimeter setting not received, use Hammond altimeter setting and increase all DA 91 feet and all MDA 100 feet; increase S-ILS 22R all Cats visibility to RVR 2200; increase S-LOC 22R Cat C/D visibility to RVR 5000. For inop MALSR when using Hammond altimeter setting, increase S-ILS 22R all Cats visibility to RVR 4500, and S-LOC 22R Cat C/D visibility to 1½ mile. For inop MALSR, increase S-LOC 22R Cat C/D visibility to RVR 5500. VDP NA with Hammond altimeter setting.

MALSR

MISSED APPROACH:
Climb to 600 then climbing right turn to 2000 direct LSU VORTAC and hold.

| | | | | | |
|----------------------|---|--|-------------------------|--------------------------|-------------------------|
| ATIS 125.2 | BATON ROUGE APP CON ★ 120.3 278.3 | RYAN TOWER ★ 118.45 (CTAF) 0 257.8 | GND CON 121.9 | CLNC DEL 119.4 | UNICOM 122.95 |
|----------------------|---|--|-------------------------|--------------------------|-------------------------|



| | | |
|----------------|----------|----------------|
| ELEV 70 | D | TDZE 70 |
|----------------|----------|----------------|



| CATEGORY | A | B | C | D |
|-----------|----------------------|----------------------|----------------------|------------------------|
| S-ILS 22R | 270/18 200 (200-½) | | | |
| S-LOC 22R | 440/24 | 370 (400-½) | 440/35 | 370 (400-¾) |
| CIRCLING | 560-1 490 (500-1) | 660-1 590 (600-1) | 780-2 710 (800-2) | 840-2½ 770 (800-2½) |

BATON ROUGE, LOUISIANA
Amdt 12A 04FEB16

BATON ROUGE METRO, RYAN FLD (BTR)
30°32'N-91°09'W
ILS or LOC/DME RWY 22R

SC-4, 07 AUG 2025 to 04 SEP 2025

SC-4, 07 AUG 2025 to 04 SEP 2025