

BATON ROUGE, LOUISIANA

AL-40 (FAA)

24305

LOC/DME I-BTR	APP CRS	Rwy Idg
110.3	133°	5720
Chan 40		TDZE 67
		Apt Elev 70

ILS or LOC RWY 13

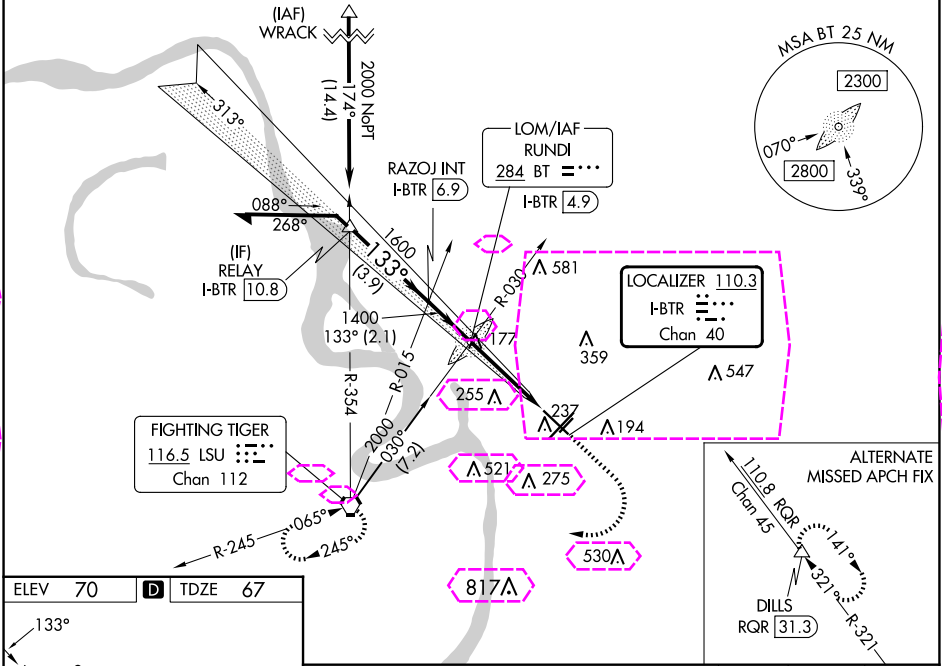
BATON ROUGE METRO, RYAN FLD (BTR)

⚠ For inop MALS when using Hammond altimeter setting, increase S-ILS 13 all Cats visibility to ¾ mile, and S-LOC 13 visibility to 1¾ mile. VDP NA with Hammond altimeter setting. When local altimeter setting not received, use Hammond altimeter setting and increase all DA 91 feet and all MDA 100 feet, increase S-LOC 13 Cats C and D visibility ¼ mile, increase Circling Cats C and D visibility ¼ mile. For inop MALS, increase S-LOC 13 Cats C and D to 1¾ mile.

MALS

MISSED APPROACH:
Climb to 700 then climbing right turn to 2000 direct LSU VORTAC and hold.

ATIS	BATON ROUGE APP CON ★	RYAN TOWER ★	GND CON	CLNC DEL	UNICOM
125.2	120.3 278.3	118.45 (CTAF) 257.8	121.9	119.4	122.95



ELEV 70 **D** **TDZE 67**

TDZ/CL Rwy 22R
HIRL Rwy 13-31 and 4L-22R
MIRL Rwy 4R-22L

FAF to MAP 3.7 NM

Knots	60	90	120	150	180
Min:Sec	3:42	2:28	1:51	1:29	1:14

CIRCLING

Remain within 10 NM

LOC only.
Use I-BTR DME when on the localizer course.

CATEGORY	A	B	C	D
S-ILS 13	267-½ 200 (200-½)			
S-LOC 13	480-½ 413 (500-½)		480-¾ 413 (500-¾)	
	560-1 490 (500-1)	660-1 590 (600-1)	780-2 710 (800-2)	840-2½ 770 (800-2½)

BATON ROUGE, LOUISIANA
Amdt 28 20AUG15

30°32'N-91°09'W

BATON ROUGE METRO, RYAN FLD (BTR)

ILS or LOC RWY 13

LOC/DME I-BTR 110.3 Chan 40	APP CRS 133°	Rwy Ldg 5720 TDZE 67 Apt Elev 70
---	------------------------	---

ILS or LOC RWY 13

Baton Rouge Metro, Ryan FLD (BTR)

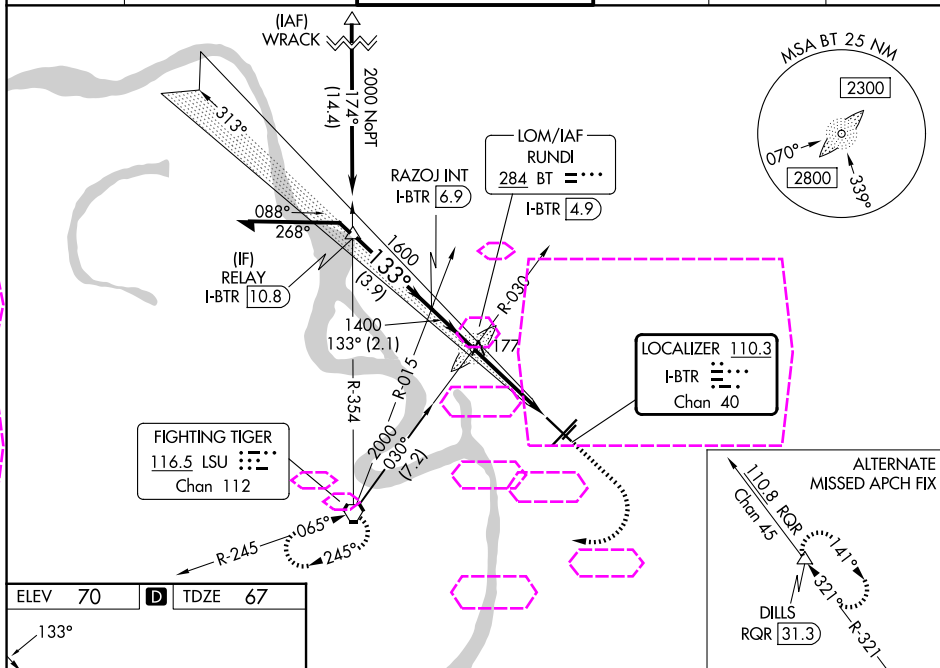


For inop MALSR when using Hammond altimeter setting, increase S-ILS 13 all Cats visibility to 7/8 mile, and S-LOC 13 visibility to 1 3/8 mile. VDP NA with Hammond altimeter setting. When local altimeter setting not received, use Hammond altimeter setting and increase all DA 91 feet and all MDA 100 feet, increase S-LOC 13 Cats C and D visibility 1/4 mile, increase Circling Cats C and D visibility 1/4 mile. For inop MALSR, increase S-LOC 13 Cats C and D to 1 3/8 mile.

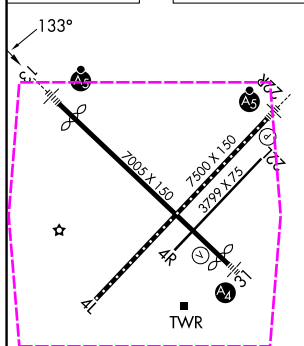


MISSED APPROACH:
Climb to 700 then
climbing right turn to
2000 direct LSU
VORTAC and hold.

ATIS 125.2	BATON ROUGE APP CON ★ 120.3 278.3	RYAN TOWER ★ 118.45 (CTAF) 0 257.8	GND CON 121.9	CLNC DEL 119.4	UNICOM 122.95
----------------------	---	--	-------------------------	--------------------------	-------------------------



ELEV	70	D	TDZE	67
------	----	----------	------	----



TDZ/CL Rwy 22R
HIRL Rwy 13-31 and 4L-22R **L**
MIRL Rwy 4R-22L

FAF to MAP 3.7 NM

Knots	60	90	120	150	180
Min:Sec	3:42	2:28	1:51	1:29	1:14

Baton Rouge, Louisiana

Amdt 28 20AUG15

The diagram shows a radar plot with two primary contacts:

- RAZOJ INT**: Located at a bearing of 313° and a range of 1600 . It is identified as an **I-BTR** with a value of 6.9 .
- RUNDI LOM/INT**: Located at a bearing of 733° and a range of 1400 . It is also identified as an **I-BTR** with a value of 4.9 .

A vertical dashed line indicates a reference point or heading. At the bottom left, there is a heading indicator showing 3.00° and "H 57". A note at the top left says "Remain within 10 NM". A shaded gray area with an arrow points towards the lower right contact.

		2.1 NM	2.7 NM	1 NM	
CATEGORY	A	B	C	D	
S-ILS 13	267-½ 200 (200-½)				
S-LOC 13	480-½ 413 (500-½)		480-¾ 413 (500-¾)		
CIRCLING	560-1 490 (500-1)	660-1 590 (600-1)	780-2 710 (800-2)	840-2½ 770 (800-2½)	

Baton Rouge Metro, Ryan FLD (BTR)

ILS or LOC RWY 13

30°32'N-91°09'W

SC-4, 07 AUG 2025 to 04 SEP 2025

SC-4, 07 AUG 2025 to 04 SEP 2025