

BANGOR, MAINE

AL-39 (FAA)

24305

WAAS CH 78007 W33A	APP CRS 330°	Rwy Idg 11440 TDZE 163 Apt Elev 192
--	------------------------	--

RNAV (GPS) RWY 33
BANGOR INTL (BGR)

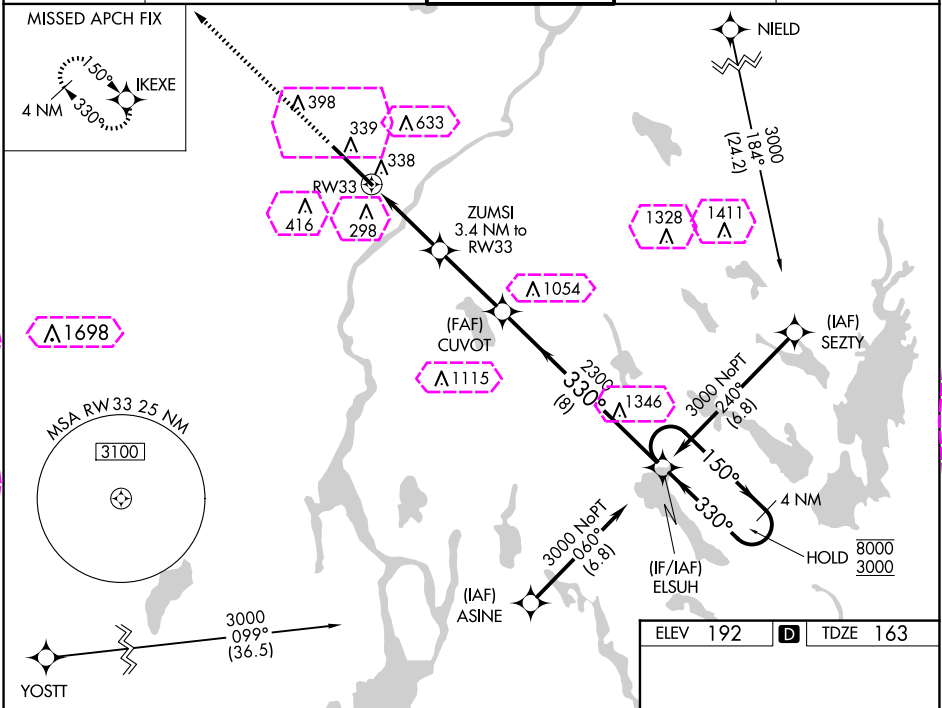
RNP APCH:

⚠ Circling NA northeast of Rws 15 and 33. For uncompensated Baro-VNAV systems, LNAV/VNAV NA below -18°C or above 54°C. For inop ALS, increase LPV Cat E visibility to RVR 4000, LNAV/VNAV Cat E visibility to RVR 5500, and LNAV Cat E visibility to 1¼ SM. **RVR 1800 authorized with use of FD or AP or HUD to DA.

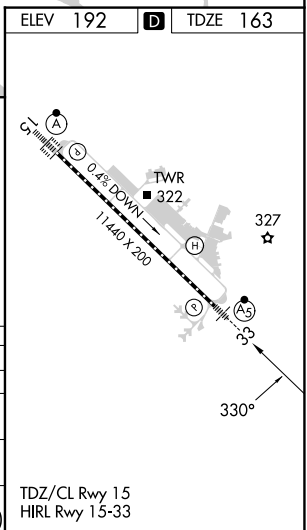
MALS

MISSED APPROACH:
Climb to 3000 direct IKEXE and hold.

ATIS 127.75	BANGOR APP CON 118.925 239.3	BANGOR TOWER 120.7 233.7	GND CON 121.9 348.6	CLNC DEL 135.9 348.6
-----------------------	--	------------------------------------	-------------------------------	--------------------------------



3000	IKEXE				
*LNAV only.	ZUMSI 3.4 NM to RW33	CUVOT 2300	ELSUH 4 NM Holding Pattern		
	*1.2 NM to RW33		150° → 8000 ← 330° 3000		
	RW33	*1300	2300	GP 3.00° TCH 57	
	1.2	2.2 NM	3.1 NM	8 NM	
CATEGORY	A	B	C	D	E
LPV DA**	363/24 200 (200-½)				
LNAV/VNAV DA	519/30 356 (400-¾)				
LNAV MDA	600/24 437 (500-½)		600/40 437 (500-¾)		
CIRCLING	640-1 448 (500-1)	720-1 528 (600-1)	740-1½ 548 (600-1½)	820-2 628 (700-2)	880-2½ 688 (700-2½)



BANGOR, MAINE
Amdt 1A 20JUN19

44°48'N-68°50'W

RNAV (GPS) RWY 33
BANGOR INTL (BGR)

BANGOR, MAINE


AL-39 (FAA)

25219

WAAS CH 78007 W33A	APP CRS 330°	Rwy Ldg 11440 TDZE 163 Apt Elev 192
--	------------------------	--

RNAV (GPS) RWY 33
BANGOR INTL (BGR)

RNP APCH.

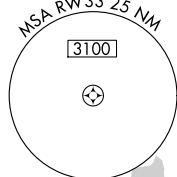
 Circling NA northeast of Rwy 15 and 33. For uncompensated Baro-VNAV systems, LNAV/VNAV NA below -18°C or above 54°C. For inop ALS, increase LPV Cat E visibility to RVR 4000, LNAV/VNAV Cat E visibility to RVR 5500, and LNAV Cat E visibility to 1/4 SM.
****RVR 1800 authorized with use of FD or AP or HUD to DA.**



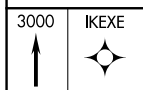
MISSED APPROACH:
Climb to 3000 direct
IKEXE and hold.

ATIS 127.75	BANGOR APP CON 118.925 239.3	BANGOR TOWER 120.7 233.7	GND CON 121.9 348.6	CLNC DEL 135.9 348.6
----------------	---------------------------------	-----------------------------	------------------------	-------------------------

MISSED APCH FIX



YOSTI

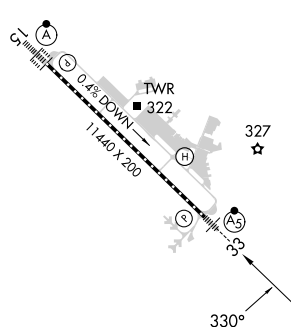


*LNAV only.

Figure 1 illustrates a sample flight profile. The profile starts at RW33, passes through ZUMSI (3.4 NM to RW33), and ends at CUVOT (2300). Key altitudes and distances are marked: 1.2 NM to RW33, 2.2 NM, 3.1 NM, 8 NM, 1300, 2300, 330°, 150°, 330°, 8000, 3000, GP 3.00°, TCH 57'.

CATEGORY	A	B	C	D	E
LPV DA**	363/24 200 (200-½)				
LNAV/VNAV DA	519/30 356 (400-¾)				
LNAV MDA	600/24 437 (500-½)		600/40 437 (500-¾)		
CIRCLING	640-1 448 (500-1)	720-1 528 (600-1)	740-1½ 548 (600-1½)	820-2 628 (700-2)	880-2½ 688 (700-2½)

ELEV 192	D	TDZE 163
----------	----------	----------



TDZ/CL Rwy 15
HIRL Rwy 15-33

BANGOR, MAINE
Amdt 1A 20JUN19

44°48'N-68°50'W

BANGOR INTL (BGR)
RNAV (GPS) RWY 33