

BANGOR, MAINE


AL-39 (FAA)

24305

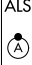
LOC/DME I-JVH	APP CRS	Rwy Idg	11440
109.5	150°	TDZE	192
Chan 32		Apt Elev	192

ILS Y or LOC Y RWY 15

BANGOR INTL (BGR)

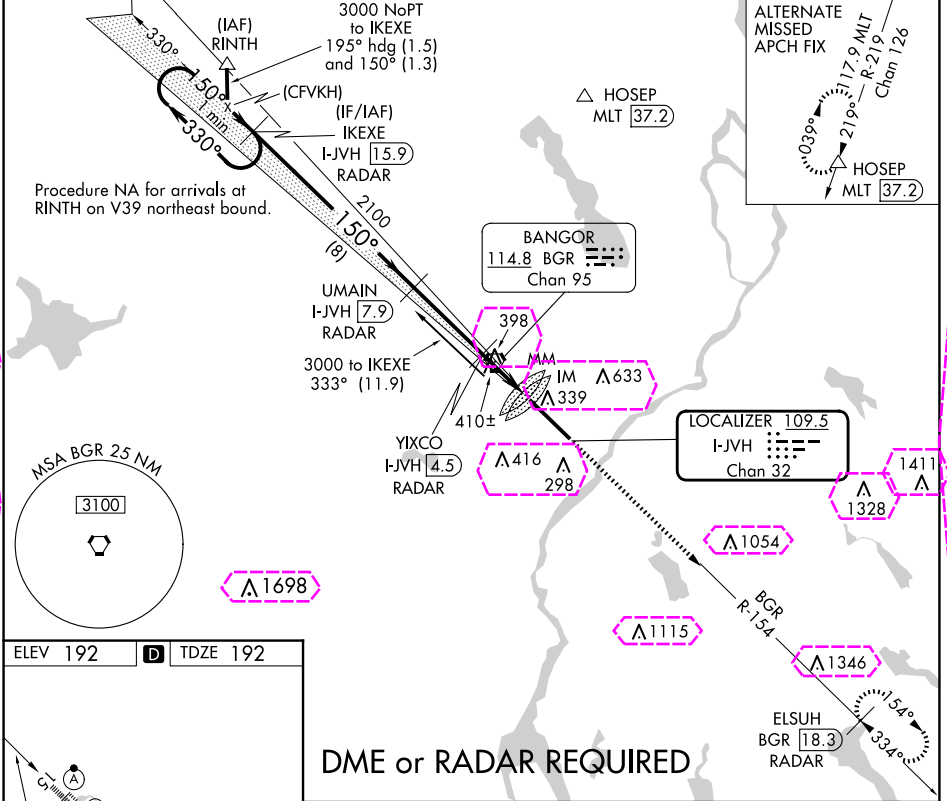


Circling NA NE of Rwy 15-33. DME or RADAR required.
For inoperative ALS, increase S-ILS 15 Cat E visibility to RVR 4000, and S-LOC 15 Cat C/D/E visibility to 1 3/8 SM.



MISSED APPROACH: Climb to 3000 on heading 150° and BGR VORTAC R-154 to ELSUH/BGR 18.3 DME/RADAR and hold.

ATIS	BANGOR APP CON	BANGOR TOWER	GND CON	CLNC DEL
127.75	118.925 239.3	120.7 233.7	121.9 348.6	135.9 348.6



ELEV 192 TDZE 192

TDZ/CL Rwy 15
HIRL Rwy 15-33

FAF to MAP 5.8 NM

Knots	60	90	120	150	180
Min:Sec	5:48	3:52	2:54	2:19	1:56

DME or RADAR REQUIRED

One Minute Holding Pattern	IKEXE I-JVH 15.9 RADAR	UMAIN I-JVH 7.9 RADAR	YIXCO I-JVH 4.5 RADAR	MM I-JVH 3.3	IM I-JVH 2.1
3000	330°	150°	150°	2100	1000
GS 3.00° TCH 50					
VGSI and ILS glidepath not coincident (VGSI Angle 3.00/TCH 55).					
	8 NM	3.4 NM	1.1	0.9	0.3 0.1
CATEGORY	A	B	C	D	E
S-ILS 15	392/18 200 (200-1/2)				
S-LOC 15	660/50 468 (500-1)				
	660-1	720-1	740-1 1/2	820-2	880-2 1/2
	468 (500-1)	528 (600-1)	548 (600-1 1/2)	628 (700-2)	688 (700-2 1/2)

*LOC only.

ILS Y or LOC Y RWY 15