

BANGOR, MAINE

AL-39 (FAA)

24305

LOC/DME I-JVH	APP CRS	Rwy Idg	11440
109.5	150°	TDZE	192
Chan 32		Apt Elev	192

# ILS Y RWY 15 (CAT II & III)

BANGOR INTL (BGR)



ASR

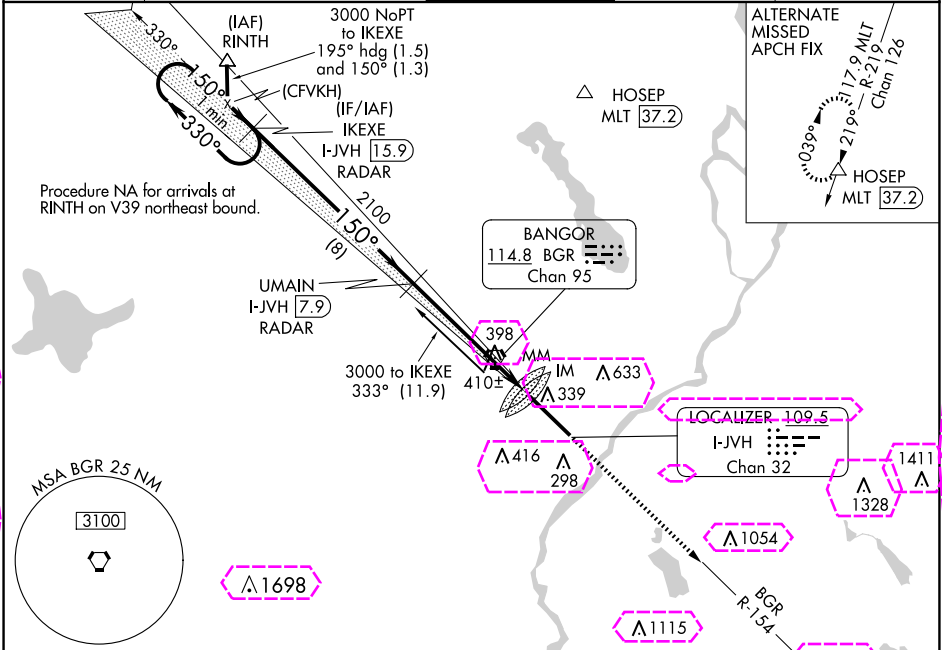
DME or RADAR required.



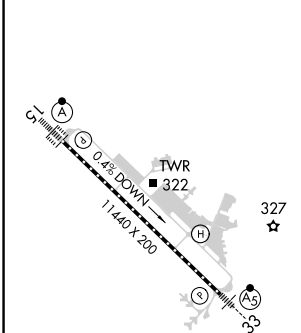
ALSF-2

MISSED APPROACH: Climb to 3000 on heading 150° and BGR VORTAC R-154 to ELSUH/BGR 18.3 DME/RADAR and hold.

ATIS	BANGOR APP CON	BANGOR TOWER	GND CON	CLNC DEL
127.75	118.925 239.3	120.7 233.7	121.9 348.6	135.9 348.6

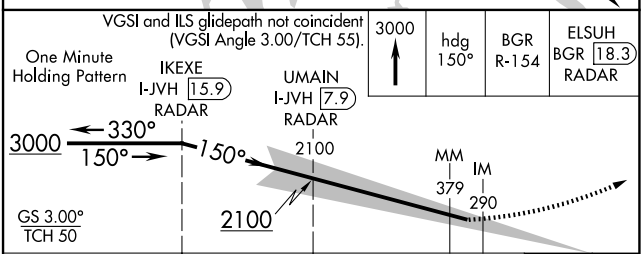


ELEV 192	D	TDZE 192
----------	---	----------



TDZ/CL Rwy 15  
HIRL Rwy 15-33

## DME or RADAR REQUIRED



CATEGORY	A	B	C	D
S-ILS 15		CAT II RA 113/12 100 DA 292		
S-ILS 15		CAT III RVR 06		

CATEGORY II & III ILS - SPECIAL AIRCREW & AIRCRAFT CERTIFICATION REQUIRED

BANGOR, MAINE  
Amdt 7 27APR17

44°48'N-68°50'W  
BANGOR INTL (BGR)  
ILS Y RWY 15 (CAT II & III)

NE-1, 10 JUL 2025 to 07 AUG 2025

NE-1, 10 JUL 2025 to 07 AUG 2025

BANGOR, MAINE

AL-39 (FAA)

25219

LOC/DME I-JVH	APP CRS	Rwy Ldg	11440
109.5	150°	TDZE	192
Chan 32		Apt Elev	192

# ILS Y RWY 15 (CAT II & III)

BANGOR INTL (BGR)

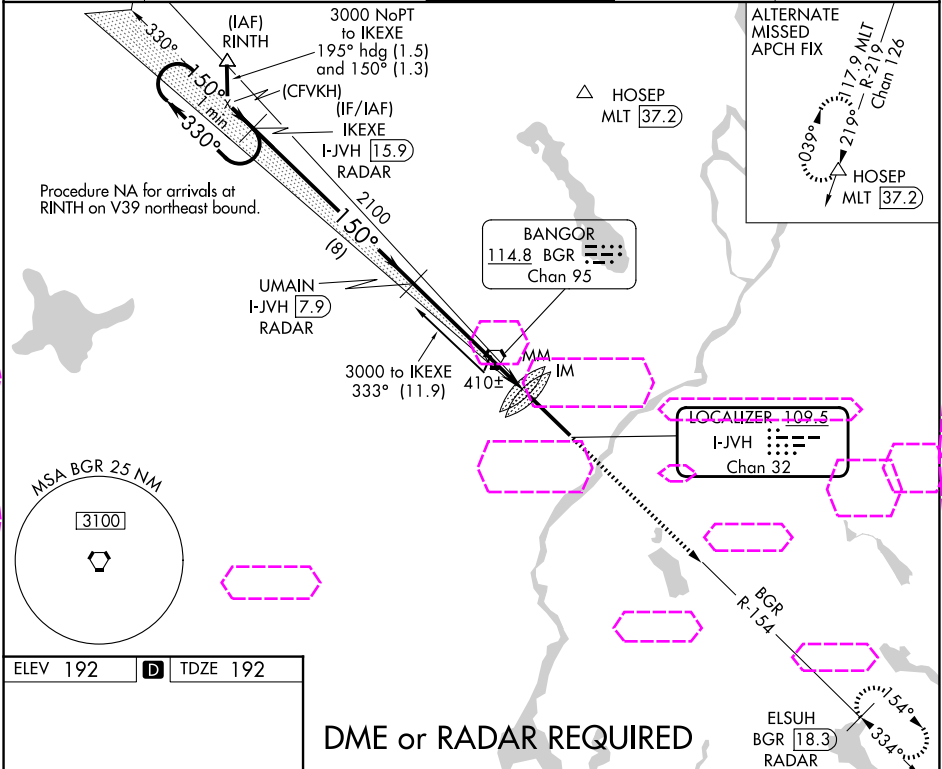
ALS-F-2

MISSED APPROACH: Climb to 3000 on heading 150° and BGR VORTAC R-154 to ELSUH/BGR 18.3 DME/RADAR and hold.

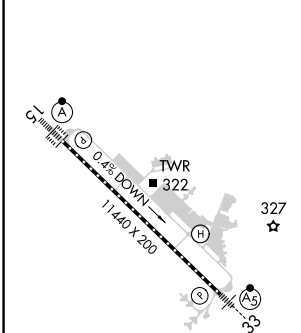
DME or RADAR required.

ASR

ATIS	BANGOR APP CON	BANGOR TOWER	GND CON	CLNC DEL
127.75	118.925 239.3	120.7 233.7	121.9 348.6	135.9 348.6

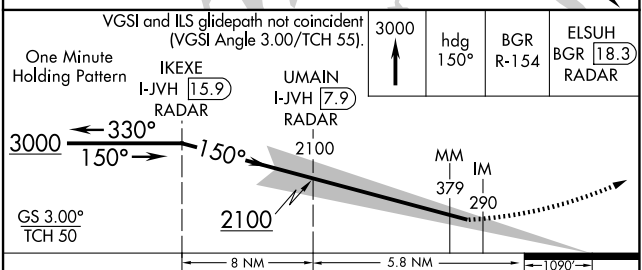


ELEV 192	D	TDZE 192
----------	---	----------



TDZ/CL Rwy 15  
HIRL Rwy 15-33

## DME or RADAR REQUIRED



CATEGORY	A	B	C	D
S-ILS 15	CAT II	RA 113/12	100 DA 292	
S-ILS 15		CAT III	RVR 06	

## CATEGORY II & III ILS - SPECIAL AIRCREW & AIRCRAFT CERTIFICATION REQUIRED

BANGOR, MAINE  
Amdt 7 27APR17

BANGOR INTL (BGR)  
44°48'N-68°50'W  
ILS Y RWY 15 (CAT II & III)

NE-1, 07 AUG 2025 to 04 SEP 2025

NE-1, 07 AUG 2025 to 04 SEP 2025