


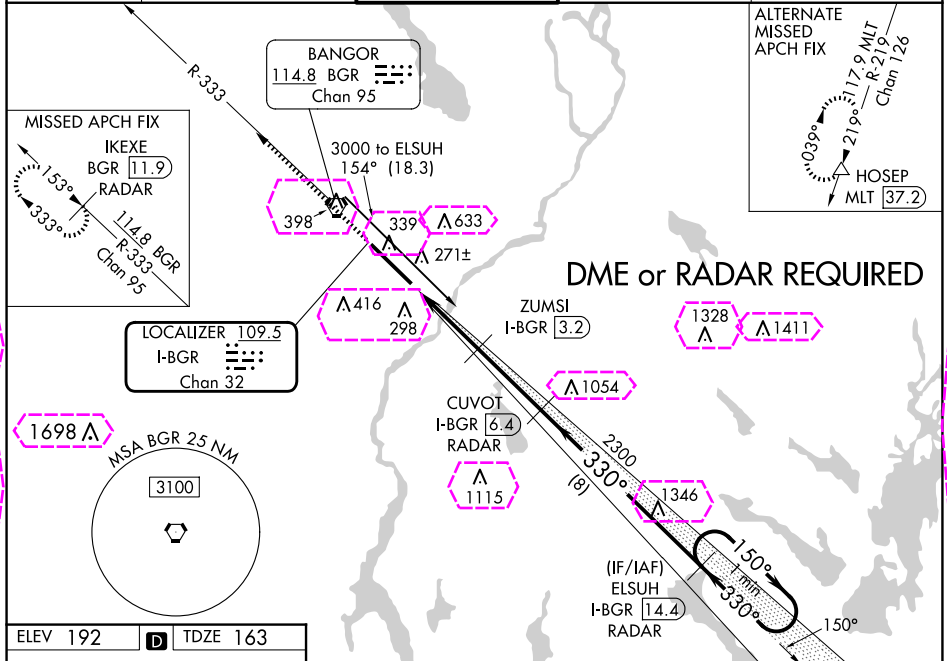


LOC/DME I-BGR <b>109.5</b> Chan <b>32</b>	APP CRS <b>330°</b>	Rwy Idg <b>11440</b> TDZE <b>163</b> Apt Elev <b>192</b>
---	------------------------	--

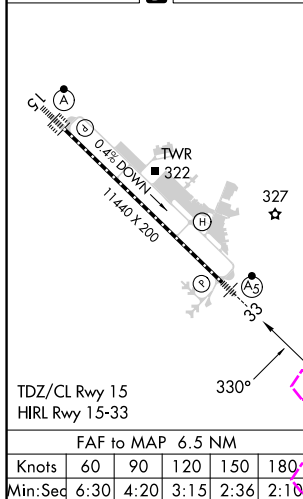
ILS or LOC RWY 33  
BANGOR INTL (BGR)

  ASR	<p>Inoperative table does not apply to S-LOC 33 Cats C/D/E. Circling NA northeast of Rwy 15-33. DME or RADAR required. For inop ALS, increase Cat E S-ILS 33 visibility to RVR 4000. ZUMSI Minimums: For inop ALS, increase S-LOC 33 Cat E visibility to RVR 5000.          #RVR 1800 authorized with the use of FD or AP or HUD to DA.</p>	<p>MALSR</p> 	<p>MISSED APPROACH: Climb to 3000 on heading 330° and on BGR VORTAC R-333 to IKEXE/BGR VORTAC 11.9 DME/RADAR and hold.</p>
---	---	--	--

ATIS	BANGOR APP CON		BANGOR TOWER		GND CON		CLNC DEL	
127.75	118.925	239.3	120.7	233.7	121.9	348.6	135.9	348.6



ELEV 192	<b>D</b>	TDZE 163
----------	----------	----------



3000 ↑ hdg 330°	BGR R-333	IKEXE BGR <u>11.9</u> RADAR	CUVOT I-BGR <u>6.4</u> RADAR	ELSUH I-BGR <u>14.4</u> RADAR	One Minute Holding Pattern
* LOC only.	ZUMSI * I-BGR <u>0.7</u> I-BGR <u>3.2</u>	2300	330°	150° → 3000 ← 330°	GS 3.00° TCH 57
0.9	2.5 NM	3.1 NM	8 NM		
CATEGORY	A	B	C	D	E
S-ILS 33	#363/24 200 (200-½)				
S-LOC 33	1300/40 1137 (1200-¾)	1300/55 1137 (1200-1)	1300-3	1137 (1200-3)	
<b>CIRCLING</b>	1300-1¼ 1108 (1200-1½)	1300-1½ 1108 (1200-1½)	1300-3	1108 (1200-3)	
ZUMSI MINIMUMS					
S-LOC 33	500/24	337 (400-½)	500/26	337 (400-½)	
<b>CIRCLING</b>	640-1 448 (500-1)	720-1 528 (600-1)	740-1½ 548 (600-1½)	820-2 628 (700-2)	880-2½ 688 (700-2½)

BANGOR, MAINE  
Amdt 13 27APR17

44°48'N-68°50'W

BANGOR INTL (BGR)  
ILS or LOC RWY 33

NE-1, 10 JUL 2025 to 07 AUG 2025

NE-1, 10 JUL 2025 to 07 AUG 2025

BANGOR, MAINE

AL-39 (FAA)

25219

LOC/DME I-BGR	APP CRS	Rwy Ldg
109.5	330°	11440
Chan 32		TDZE 163
		Apt Elev 192

# ILS or LOC RWY 33

BANGOR INTL (BGR)

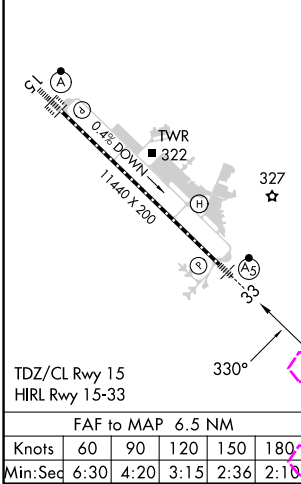
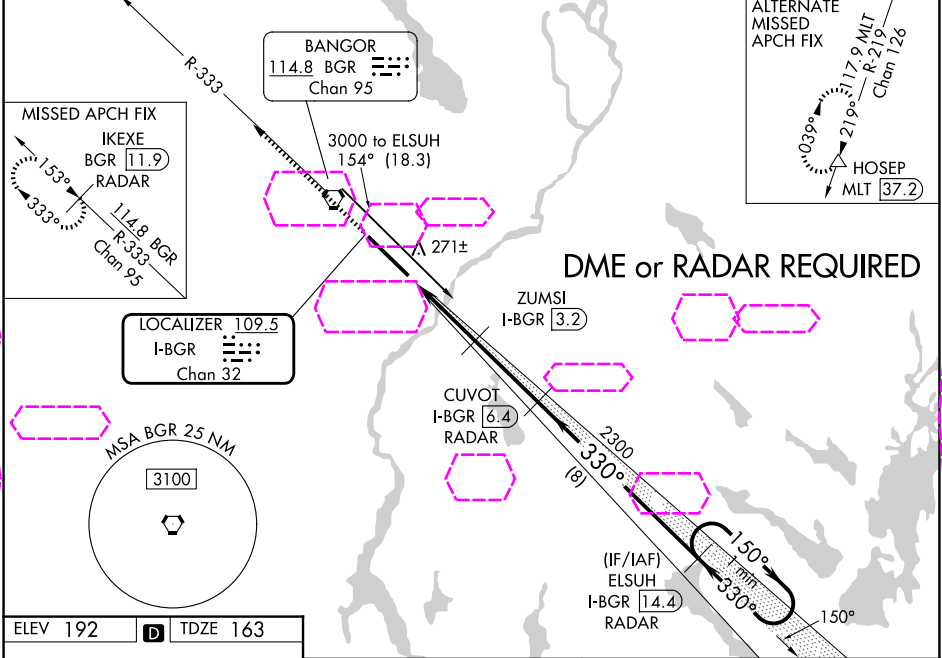
**ASR**

Inoperative table does not apply to S-LOC 33 Cats C/D/E. Circling NA northeast of Rwy 15-33. DME or RADAR required. For inop ALS, increase Cat E S-ILS 33 visibility to RVR 4000. ZUMSI Minimums: For inop ALS, increase S-LOC 33 Cat E visibility to RVR 5000. #RVR 1800 authorized with the use of FD or AP or HUD to DA.

**MALSR**

**MISSED APPROACH:** Climb to 3000 on heading 330° and on BGR VORTAC R-333 to IKEXE/BGR VORTAC 11.9 DME/RADAR and hold.

ATIS	BANGOR APP CON	BANGOR TOWER	GND CON	CLNC DEL
127.75	118.925 239.3	120.7 233.7	121.9 348.6	135.9 348.6



3000	hdg 330°	BGR R-333	IKEXE BGR 11.9 RADAR	CUVOT I-BGR 6.4 RADAR	ELSUH I-BGR 14.4 RADAR	One Minute Holding Pattern
<b>* LOC only.</b>						
CATEGORY	A	B	C	D	E	
S-ILS 33	#363/24 200 (200-½)					
S-LOC 33	1300/40 1137 (1200-¾)	1300/55 1137 (1200-1)	1300-3	1137 (1200-3)		
	1300-1¼ 1108 (1200-1¼)	1300-1½ 1108 (1200-1½)	1300-3	1108 (1200-3)		
<b>CIRCLING</b>						
<b>ZUMSI MINIMUMS</b>						
S-LOC 33	500/24 337 (400-½)	500/26 337 (400-½)				
	640-1 448 (500-1)	720-1 528 (600-1)	740-1½ 548 (600-1½)	820-2 628 (700-2)	880-2½ 688 (700-2½)	

BANGOR, MAINE  
Amdt 13 27APR17

44°48'N-68°50'W

# ILS or LOC RWY 33

NE-1, 07 AUG 2025 to 04 SEP 2025

NE-1, 07 AUG 2025 to 04 SEP 2025