

BANGOR, MAINE

AL-39 (FAA)

24305

LOC/DME I-BGR	APP CRS	Rwy Idg
109.5	330°	11440
Chan 32		TDZE 163
		Apt Elev 192

ILS RWY 33 (SA CAT I & II)

BANGOR INTL (BGR)

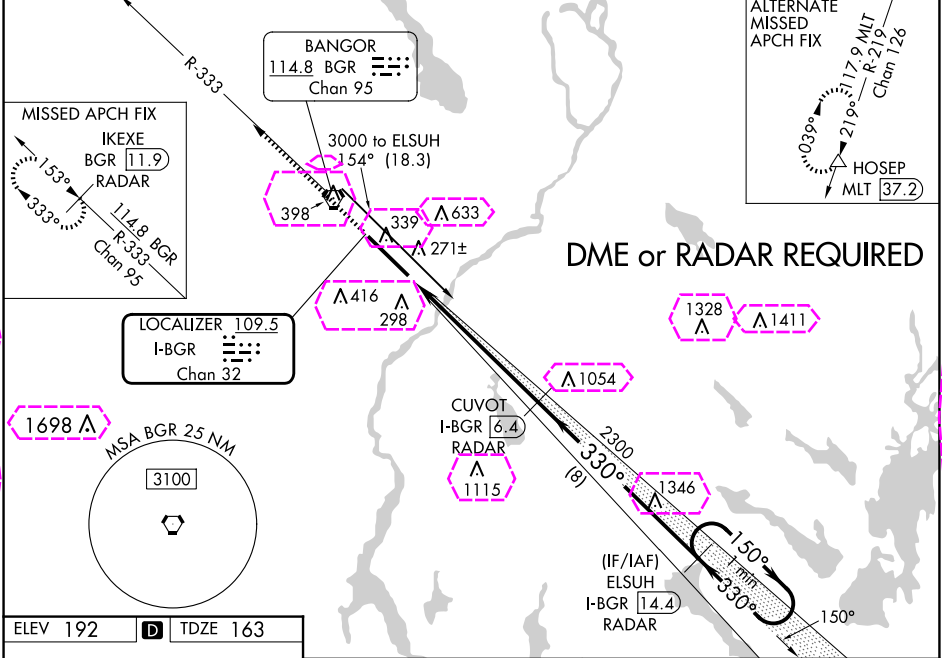
SA CAT I: Requires specific OPSPEC, MSPEC, or LOA approval and use of HUD to DH.

SA CAT II: Reduced lighting: requires specific OPSPEC, MSPEC, or LOA approval and use of Autoland or HUD to touchdown.

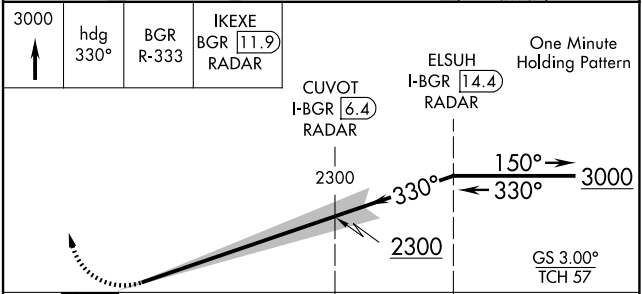
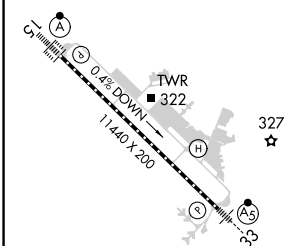
MALSR

MISSED APPROACH: Climb to 3000 on heading 330° and on BGR VORTAC R-333 to IKEXE/BGR VORTAC 11.9 DME/RADAR and hold.

ATIS	BANGOR APP CON	BANGOR TOWER	GND CON	CLNC DEL
127.75	118.925 239.3	120.7 233.7	121.9 348.6	135.9 348.6



ELEV 192	D	TDZE 163
----------	---	----------



CATEGORY	A	B	C	D
S-ILS 33	SA CAT I	RA 173/14	150	DA 313
S-ILS 33	SA CAT II	RA 103/12	100	DA 263

SA CATEGORY I & II ILS - SPECIAL AIRCREW & AIRCRAFT CERTIFICATION REQUIRED

BANGOR, MAINE
Amdt 13 27APR17

44°48'N-68°50'W

BANGOR INTL (BGR)
ILS RWY 33 (SA CAT I & II)

NE-1, 10 JUL 2025 to 07 AUG 2025

NE-1, 10 JUL 2025 to 07 AUG 2025

BANGOR, MAINE

AL-39 (FAA)

25219

LOC/DME I-BGR	APP CRS	Rwy Ldg
109.5	330°	11440
Chan 32		TDZE 163
		Apt Elev 192

ILS RWY 33 (SA CAT I & II)

BANGOR INTL (BGR)

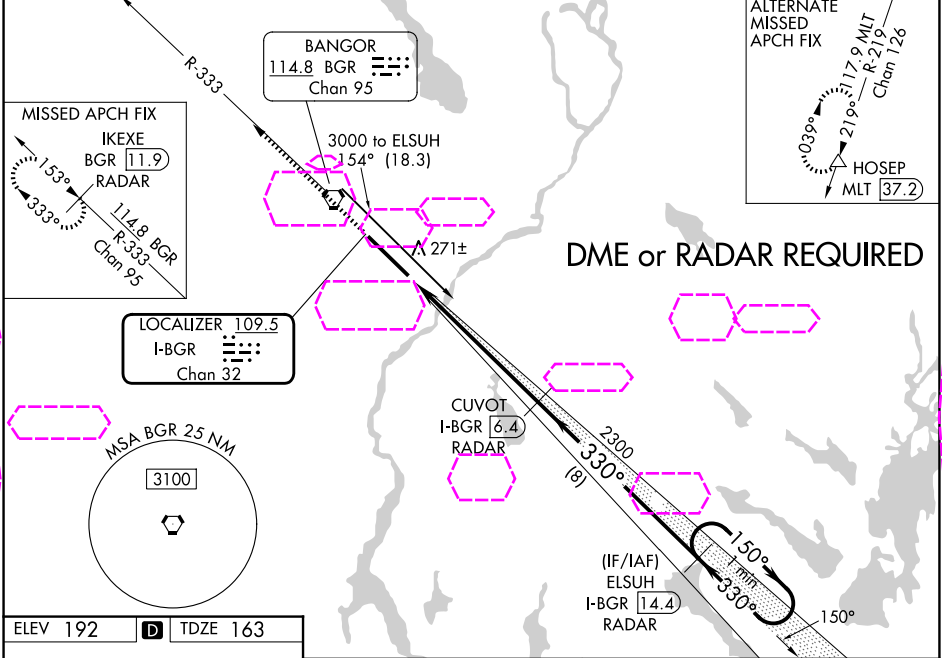
SA CAT I: Requires specific OPSPEC, MSPEC, or LOA approval and use of HUD to DH.

SA CAT II: Reduced lighting: requires specific OPSPEC, MSPEC, or LOA approval and use of Autoland or HUD to touchdown.

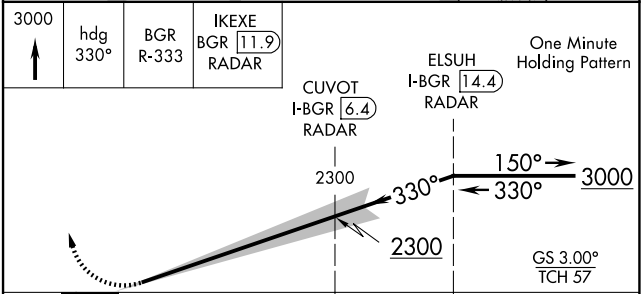
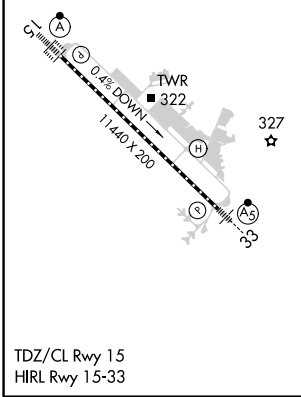
MALSR

MISSED APPROACH: Climb to 3000 on heading 330° and on BGR VORTAC R-333 to IKEXE/BGR VORTAC 11.9 DME/RADAR and hold.

ATIS	BANGOR APP CON	BANGOR TOWER	GND CON	CLNC DEL
127.75	118.925 239.3	120.7 233.7	121.9 348.6	135.9 348.6



ELEV 192	D	TDZE 163
----------	---	----------



CATEGORY	A	B	C	D
S-ILS 33	SA CAT I	RA 173/14	150	DA 313
S-ILS 33	SA CAT II	RA 103/12	100	DA 263

SA CATEGORY I & II ILS - SPECIAL AIRCREW & AIRCRAFT CERTIFICATION REQUIRED

BANGOR, MAINE
Amdt 13 27APR17

44°48'N-68°50'W

BANGOR INTL (BGR)
ILS RWY 33 (SA CAT I & II)

NE-1, 07 AUG 2025 to 04 SEP 2025

NE-1, 07 AUG 2025 to 04 SEP 2025