

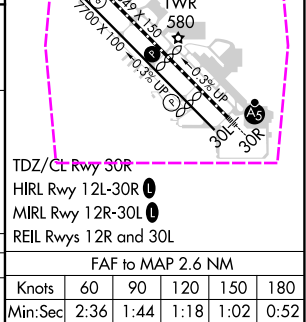
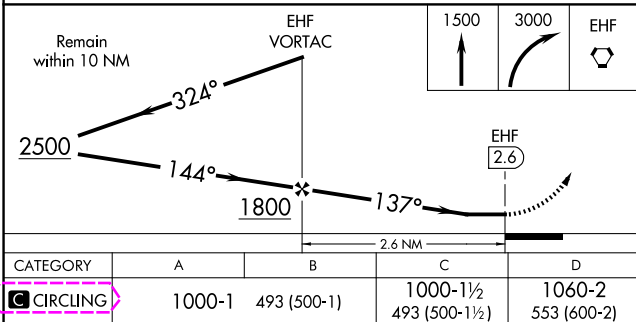
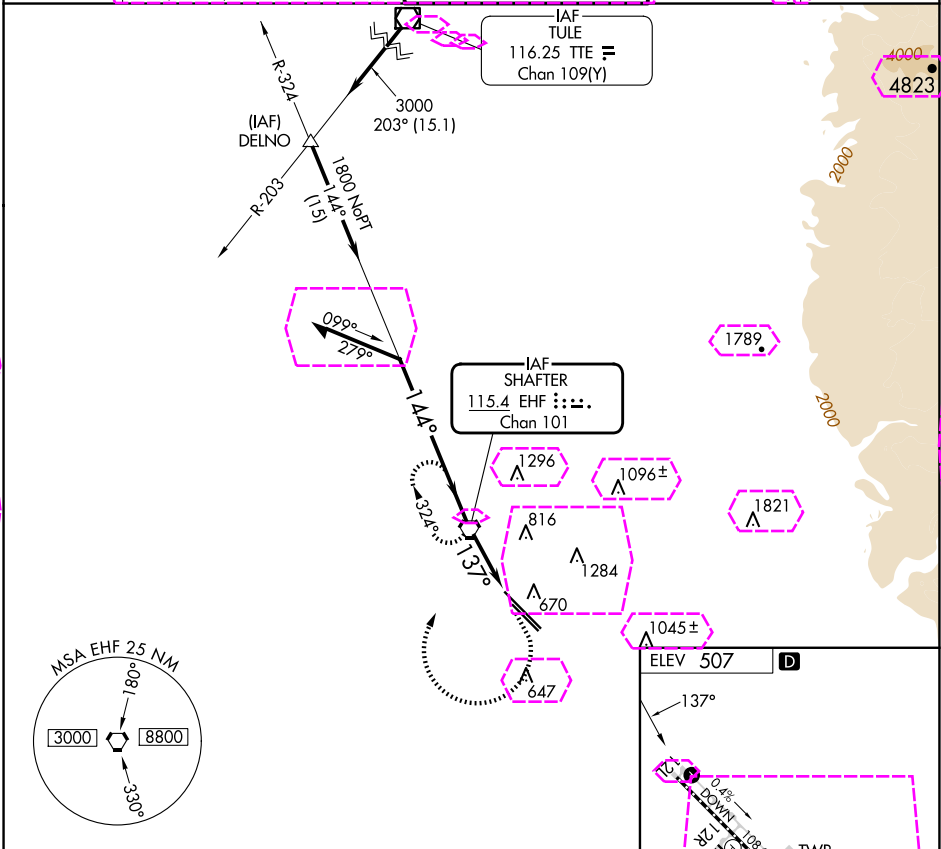
VORTAC EHF <b>115.4</b> Chan <b>101</b>	APP CRS <b>137°</b>	Rwy Idg TDZE Apt Elev	<b>N/A</b> <b>N/A</b> <b>507</b>
---	------------------------	-----------------------------	--

VOR-A  
MEADOWS FLD (BFL)

Circling not authorized northeast of Rwy 12L-30R.

**MISSED APPROACH:** Climb to 1500 then climbing right turn to 3000 direct EHF VORTAC and hold, continue climb-in-hold to 3000.

ATIS <b>118.6</b>	BAKERSFIELD APP CON★ <b>118.8 284.625 118.9 270.3</b> (SOUTH)	BAKERSFIELD TOWER★ <b>118.1 (CTAF) 0 257.8</b> (NORTH)	GND CON <b>121.7</b>	UNICOM <b>122.95</b>
----------------------	---	--	-------------------------	-------------------------



BAKERSFIELD, CALIFORNIA

AL-36 (FAA)

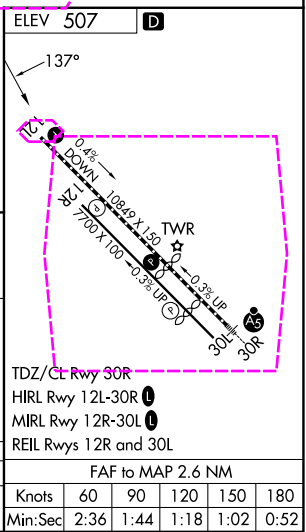
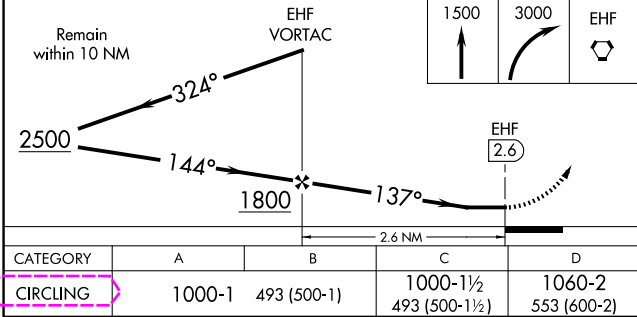
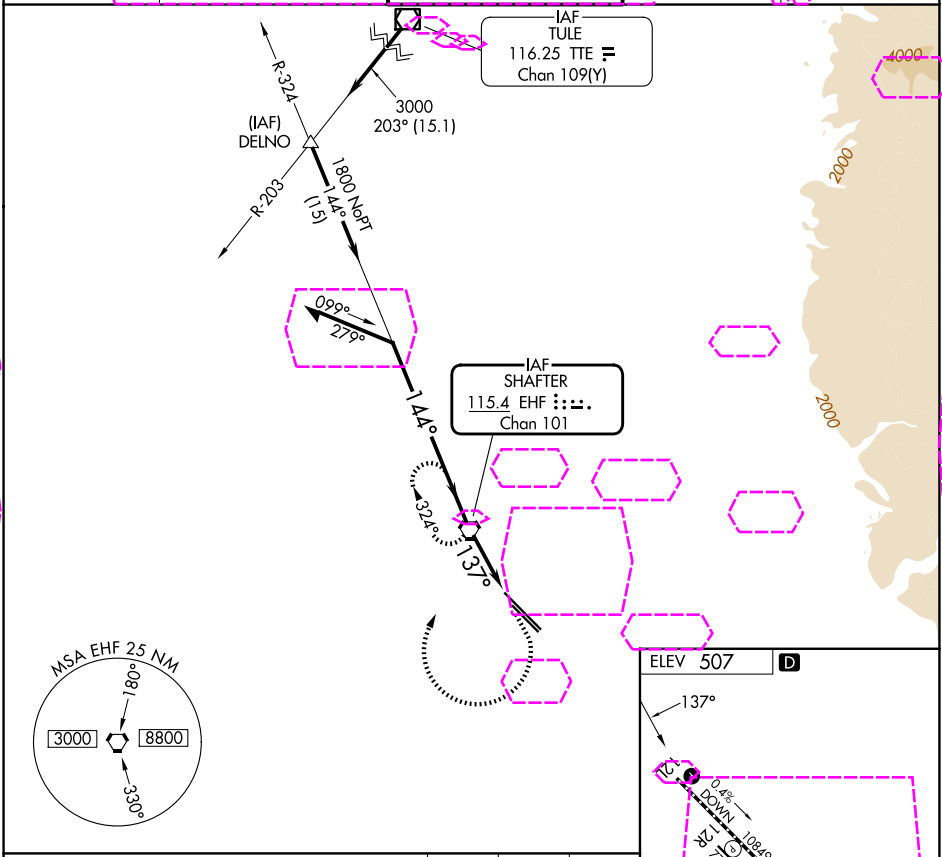
25219

VORTAC EHF <b>115.4</b> Chan <b>101</b>	APP CRS <b>137°</b>	Rwy Ldg TDZE Apt Elev <b>N/A</b> <b>N/A</b> <b>507</b>
---	------------------------	---

**VOR-A**  
MEADOWS FLD (BFL)

**⚠** Circling not authorized northeast of Rwy 12L-30R. MISSED APPROACH: Climb to 1500 then climbing right turn to 3000 direct EHF VORTAC and hold, continue climb-in-hold to 3000.

ATIS <b>118.6</b>	BAKERSFIELD APP CON * <b>118.9 270.3 (N)</b> <b>118.8 284.625 (S)</b>	BAKERSFIELD TOWER * <b>118.1 (CTAF)</b> <b>257.8</b>	GND CON <b>121.7</b>	UNICOM <b>122.95</b>
----------------------	---	---	-------------------------	-------------------------



BAKERSFIELD, CALIFORNIA  
Orig-B 23APR20

35°26'N-119°03'W

MEADOWS FLD (BFL)  
**VOR-A**

SW-3, 07 AUG 2025 to 04 SEP 2025

SW-3, 07 AUG 2025 to 04 SEP 2025