

BAKERSFIELD, CALIFORNIA

AL-36 (FAA)

24305

WAAS CH 58118 W30A	APP CRS 301°	Rwy Idg 7429 TDZE 493 Apt Elev 510
--	------------------------	---

RNAV (GPS) RWY 30R

MEADOWS FLD (BFL)

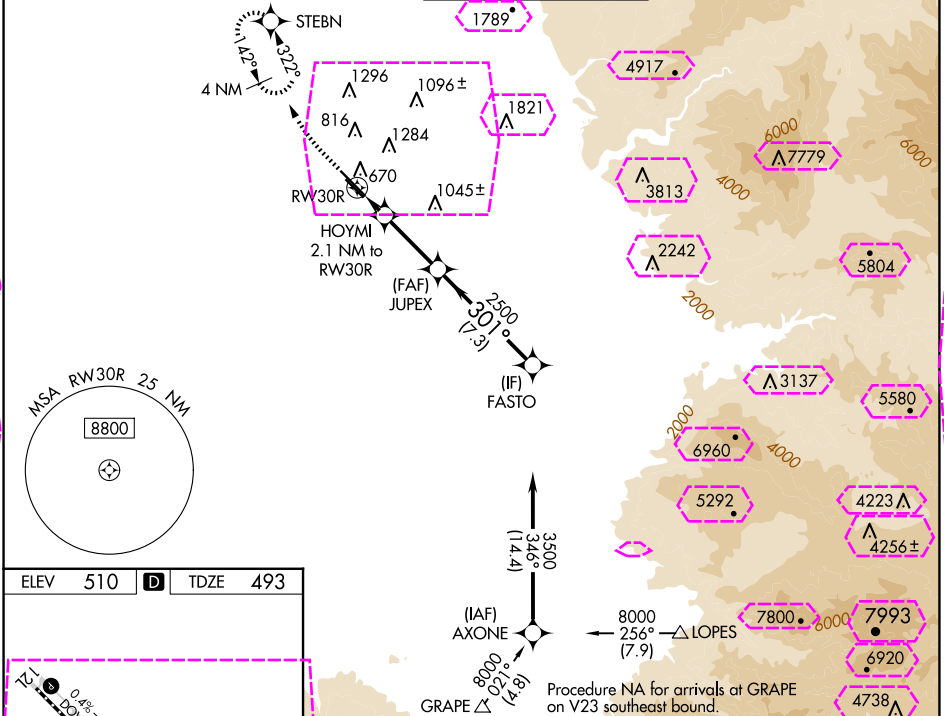
RNP APCH

▼ For uncompensated Baro-VNAV systems, LNAV/VNAV NA below 0°C (32°F) or above 54°C (130°F). Circling NA northeast of Rwy 12L-30R. When local altimeter setting not received, use Porterville altimeter setting: increase LPV DA to 790, LNAV/VNAV DA to 990. Increase LNAV/VNAV all Cats visibilities to 1 1/4 mile; increase all MDA 100 feet and LNAV visibility Cats C and D to RVR 5000. VDP and Baro-VNAV NA when using Porterville altimeter setting. For inop ALS when using Porterville altimeter setting, increase LPV all Cats visibility to RVR 5000 and LNAV Cat C and D visibility to 1%. # RVR 2400 when using Porterville altimeter setting.

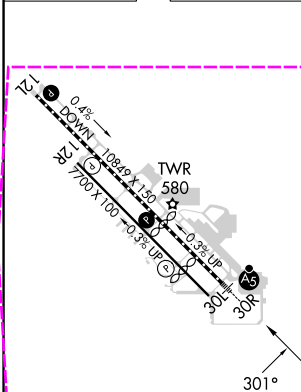


MISSED APPROACH:
Climb to 1000 then climbing right turn to 3000 direct STEBN and hold.




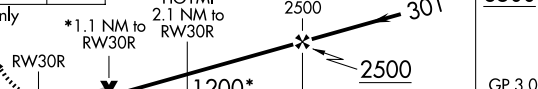

ATIS 118.6	BAKERSFIELD APP CON ★ 118.8 284.625 118.9 270.3 (SOUTH) (NORTH)	BAKERSFIELD TOWER ★ 118.1 (CTAF) 0 257.8	GND CON 121.7	UNICOM 122.95
----------------------	--	--	-------------------------	-------------------------



ELEV 510	D	TDZE 493
----------	---	----------



TDZ/CL Rwy 30R
HIRL Rwy 12L-30R
MIRL Rwy 12R-30L
REIL Rwy 12R and 30L

1000	3000	STEBN								
										
* NAV only										
										
CATEGORY			A		B		C		D	
LPV DA#			698/18		205 (200-½)					
LNAV/VNAV DA			898/45		405 (400-¾)					
LNAV MDA			880/24		387 (400-½)		880/35		387 (400-¾)	
 CIRCLING			960-1		450 (500-1)		960-1½ 450 (500-1½)		1060-2 550 (600-2)	

BAKERSFIELD, CALIFORNIA

Amdt 2B 19JUL18

35°26'N-119°03'W

MEADOWS FLD (BFL)

RNAV (GPS) RWY 30R

SW-3, 10 JUL 2025 to 07 AUG 2025

SW-3, 10 JUL 2025 to 07 AUG 2025

RNAV (GPS) RWY 30R