

BAKERSFIELD, CALIFORNIA

AL-36 (FAA)

24305

WAAS CH 61040 W12B	APP CRS 121°	Rwy Idg 7700 TDZE 488 Apt Elev 510
--	------------------------	---

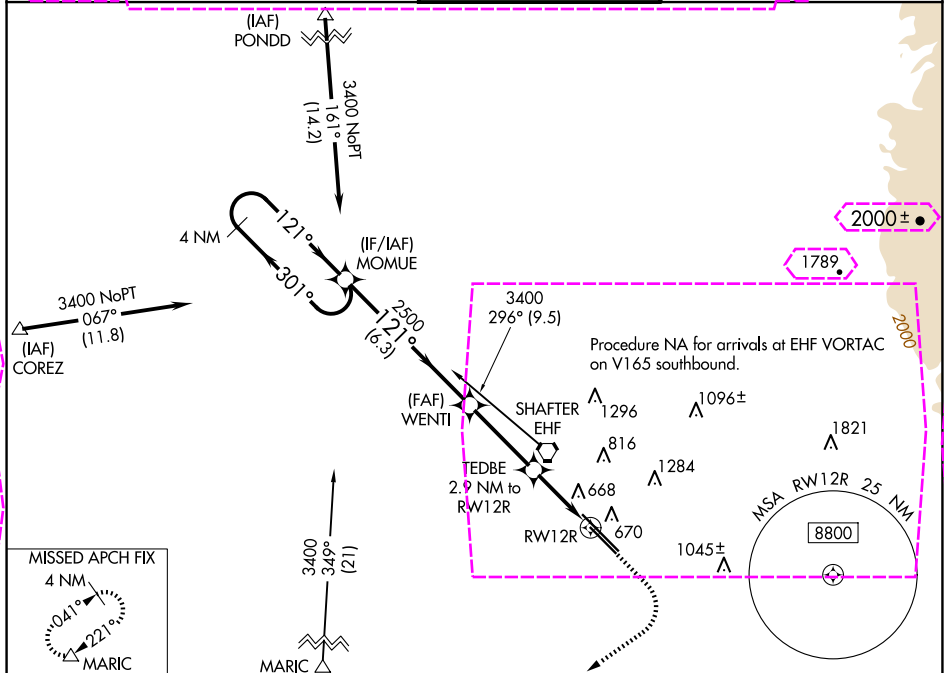
RNAV (GPS) RWY 12R

MEADOWS FLD (BFL)

⚠ For uncompensated Baro-VNAV systems, LNAV/VNAV NA below -1°C (31°F) or above 54°C (130°F). Circling NA northeast of Rwy 12L-30R.
DME/DME RNP-0.3 NA.

MISSED APPROACH: Climb to 1000 then climbing right turn to 3500 direct MARIC and hold.

ATIS 118.6	BAKERSFIELD APP CON ★ 118.8 284.625 118.9 270.3 (SOUTH) (NORTH)	BAKERSFIELD TOWER ★ 118.1 (CTAF) 0 257.8	GND CON 121.7	UNICOM 122.95
----------------------	--	--	-------------------------	-------------------------



VGSI and RNAV glidepath not coincident (VGSI Angle 3.00/TCH 25).				1000	3500	MARIC	ELEV 510	TDZE 488
4 NM Holding Pattern MOMUE				* LNAV only				
GP 3.00° TCH 50				* 1.3 NM to RWY 12R				
6.3 NM				* 1.3 NM to RWY 12R				
CATEGORY	A	B	C	D				
LPV DA	738-¾ 250 (300-¾)							
LNAV/ VNAV	969-1⅝ 481 (500-1⅝)							
LNAV MDA	920-1	432 (500-1)	920-1¼	432 (500-1¼)				
C CIRCLING	960-1	450 (500-1)	960-1½	1060-2				
			450 (500-1½)	550 (600-2)				

BAKERSFIELD, CALIFORNIA

AL-36 (FAA)

25219

WAAS CH 61040 W12B	APP CRS 121°	Rwy Ldg 7700 TDZE 488 Apt Elev 510
--	------------------------	---

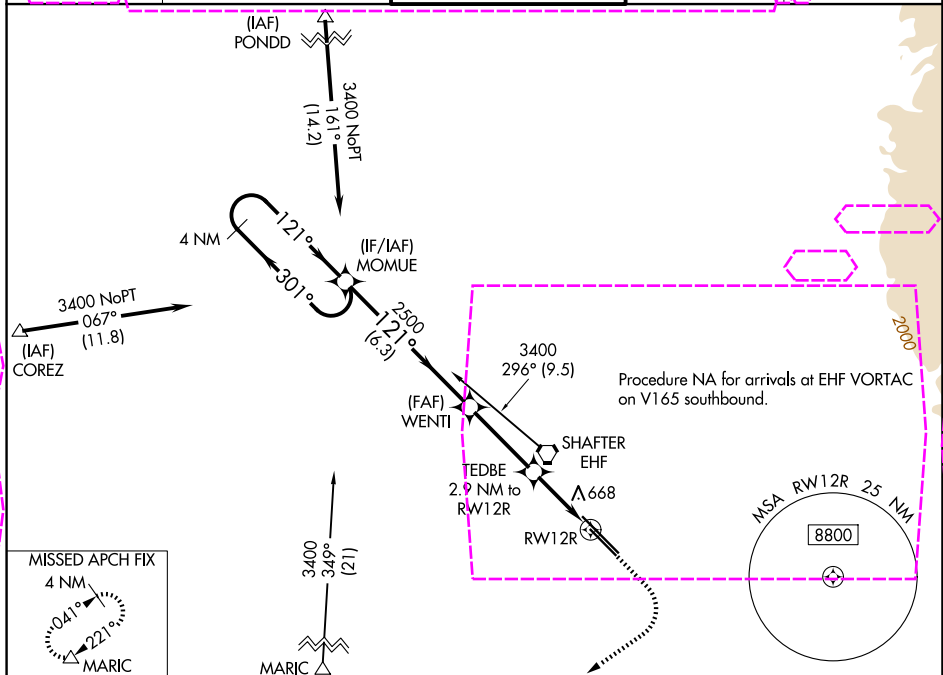
RNAV (GPS) RWY 12R

MEADOWS FLD (BFL)

⚠ For uncompensated Baro-VNAV systems, LNAV/VNAV NA below -1°C (31°F) or above 54°C (130°F). Circling NA northeast of Rwy 12L-30R.
DME/DME RNP-0.3 NA.

MISSED APPROACH: Climb to 1000 then climbing right turn to 3500 direct MARIC and hold.

ATIS 118.6	BAKERSFIELD APP CON* 118.9 270.3 (N) 118.8 284.625 (S)	BAKERSFIELD TOWER* 118.1 (CTAF) 257.8	GND CON 121.7	UNICOM 122.95
----------------------	--	--	-------------------------	-------------------------



VGSI and RNAV glidepath not coincident (VGSI Angle 3.00/TCH 25).				1000	3500	MARIC	ELEV 510	TDZE 488
4 NM Holding Pattern MOMUE				* LNAV only				
GP 3.00° TCH 50				TEDBE 2.9 NM to RWY 12R				
6.3 NM				* 1.3 NM to RWY 12R				
CATEGORY	A	B	C	D				
LPV DA	738- ³ / ₄			250 (300- ³ / ₄)				
LNAV/VNAV DA	969-1 ⁵ / ₈			481 (500-1 ⁵ / ₈)				
LNAV MDA	920-1	432 (500-1)	920-1 ¹ / ₄	432 (500-1 ¹ / ₄)				
CIRCLING	960-1	450 (500-1)	960-1 ¹ / ₂	1060-2				
				450 (500-1 ¹ / ₂)	550 (600-2)			

TDZ/CL Rwy 30R
HIRL Rwy 12L-30R **Ⓡ**
MIRL Rwy 12R-30L **Ⓡ**
REIL Rwy 12R and 30L

BAKERSFIELD, CALIFORNIA

Orig 27APR17

35°26'N-119°03'W

MEADOWS FLD (BFL)

RNAV (GPS) RWY 12R