

BAKERSFIELD, CALIFORNIA

AL-36 (FAA)

24305

WAAS CH 78418 W12A	APP CRS 121°	Rwy Idg 10848 TDZE 510 Apt Elev 510
--	------------------------	--

RNAV (GPS) RWY 12L

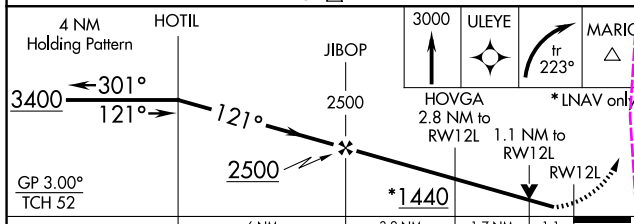
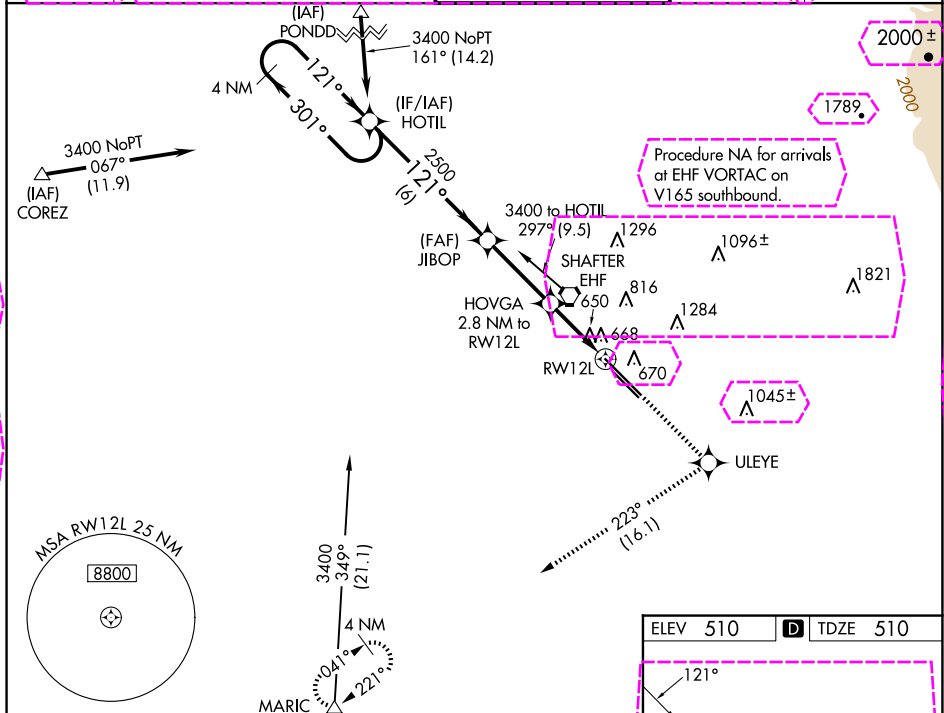
MEADOWS FLD (BFL)

RNP APCH.

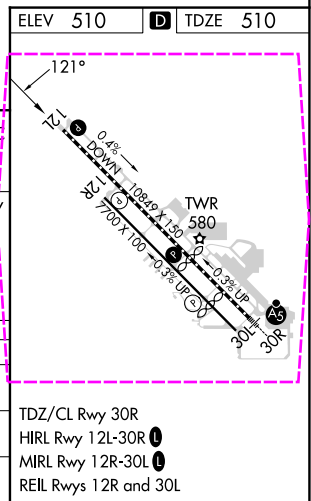
Baro-VNAV NA when using Porterville altimeter setting. For uncompensated Baro-VNAV systems, LNAV/VNAV NA below -16°C or above 54°C. Rwy 12L helicopter visibility reduction below ¾ SM NA. When local altimeter setting not received, use Porterville altimeter setting and increase all DA 92 feet, all MDA 100 feet, increase LPV all Cats, LNAV/VNAV all Cats and LNAV Cats C/D visibility ¼ mile.

MISSED APPROACH: Climb to 3000 direct ULEYE and right turn on track 223° to MARIC and hold.

ATIS 118.6	BAKERSFIELD APP CON ★ 118.8 284.625 118.9 270.3 (SOUTH) (NORTH)	BAKERSFIELD TOWER ★ 118.1 (CTAF) 257.8	GND CON 121.7	UNICOM 122.95
----------------------	--	--	-------------------------	-------------------------



CATEGORY	A	B	C	D
LPV DA	760-1	250 (300-1)		
LNAV/VNAV DA	1073-2	563 (600-2)		
LNAV MDA	920-1 410 (500-1)	920-1¼ 410 (500-1¼)		



BAKERSFIELD, CALIFORNIA

Amdt 1D 08OCT20

35°26'N-119°03'W

MEADOWS FLD (BFL)

RNAV (GPS) RWY 12L

WAAS CH 78418 W12A	APP CRS 121°	Rwy Ldg 10849 TDZE 510 Apt Elev 510
--	------------------------	--

RNAV (GPS) RWY 12L
MEADOWS FLD (BFL)

RNP APCH.

T Baro-VNAV NA when using Porterville altimeter setting. For uncompensated Baro-VNAV systems, LNAV/VNAV NA below -16°C or above 54°C. Rwy 12L helicopter visibility reduction below ¾ SM NA. When local altimeter setting not received, use Porterville altimeter setting and increase all DA 92 feet, all MDA 100 feet, increase LPV all Cats, LNAV/VNAV all Cats and LNAV Cats C/D visibility ¼ mile.

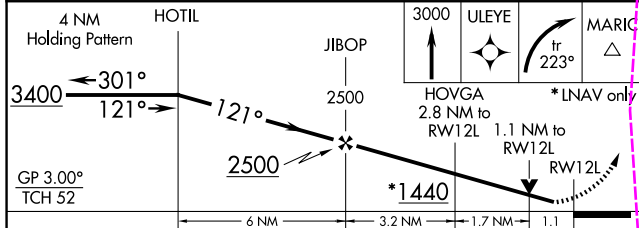
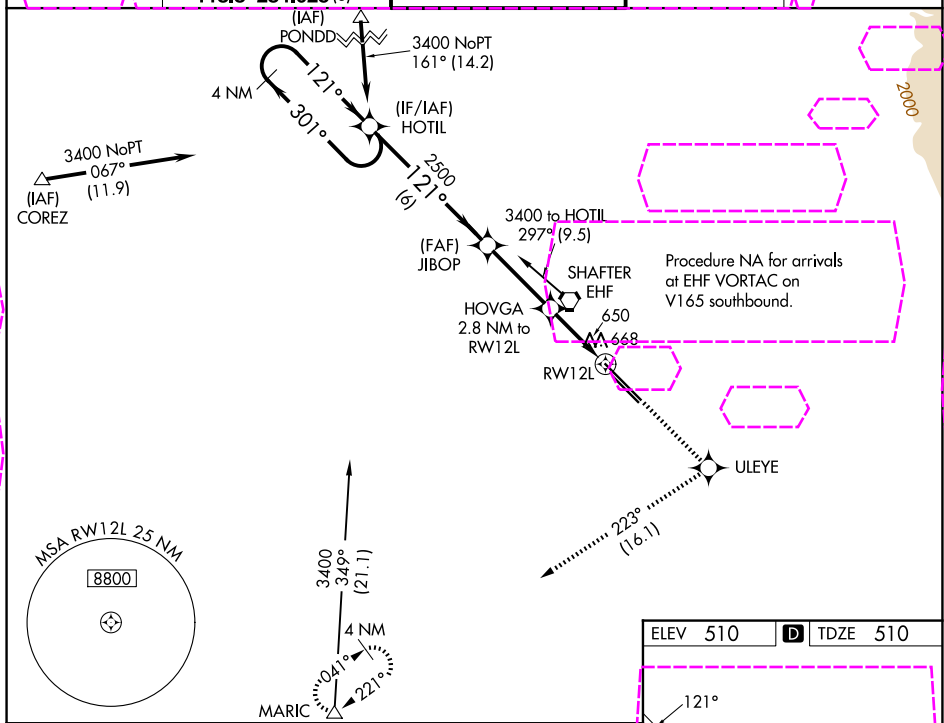
MISSED APPROACH:
Climb to 3000 direct
ULEYE and right turn
on track 223° to
MARIC and hold.

ATIS
118.6

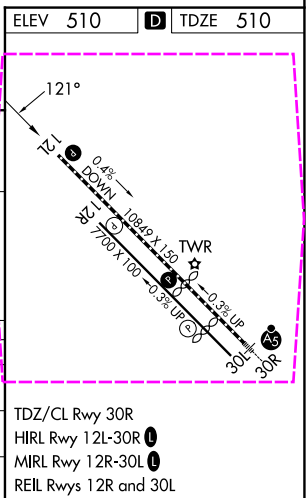
BAKERSFIELD APP CON ★
118.9 270.3 (N)
118.8 284.625 (S)

BAKERSFIELD TOWER ★
118.1 (CTAF) **L** 257.8

GND CON
121.7

UNICOM
122.95

CATEGORY	A	B	C	D
LPV DA	760-1 250 (300-1)			
LNAV/ VNAV DA	1073-2 563 (600-2)			
LNAV MDA	920-1 410 (500-1)		920-1¼ 410 (500-1¼)	



BAKERSFIELD, CALIFORNIA
Amdt 1D 08OCT20

35°26'N-119°03'W

MEADOWS FLD (BFL)

RNAV (GPS) RWY 12L

SW-3, 07 AUG 2025 to 04 SEP 2025