

BAKERSFIELD, CALIFORNIA

AL-36 (FAA)

24305

LOC/DME I-BFL 111.9 Chan 56	APP CRS 301°	Rwy Idg TDZE Apt Elev
		7429 493 510

ILS or LOC RWY 30R

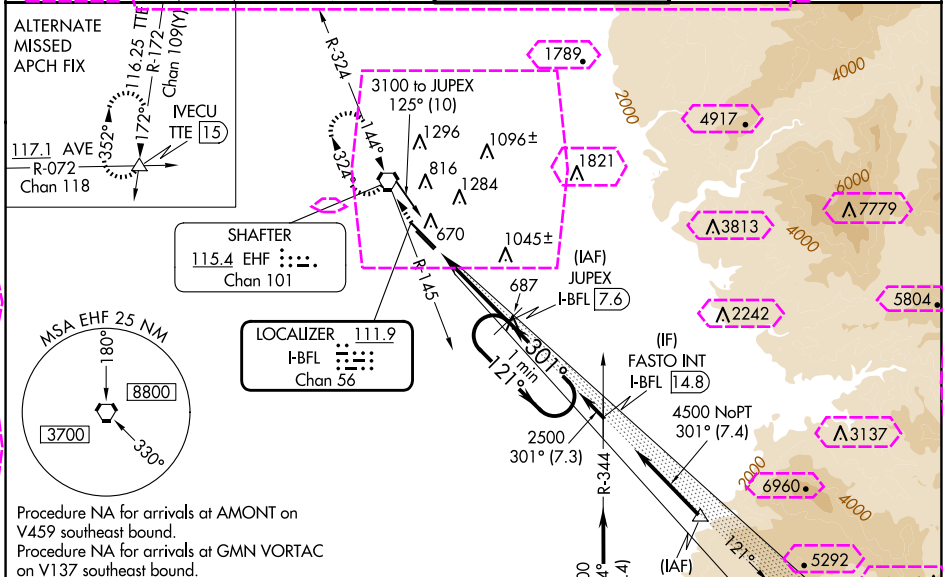
MEADOWS FLD (BFL)

⚠ Circling NA northeast of Rwy 12L-30R. DME Required. VDP NA with Porterville altimeter setting. When local altimeter setting not received, use Porterville altimeter setting: increase DA to 790 and all visibilities to RVR 2200; increase all MDA 100 feet and visibility Cats C and D to RVR 6000. For inop ALS, increase S-LOC 30R Cat A and B visibility to RVR 5000. For inop ALS when using Porterville altimeter setting, increase SHLS 30R all Cats visibility to RVR 5000.

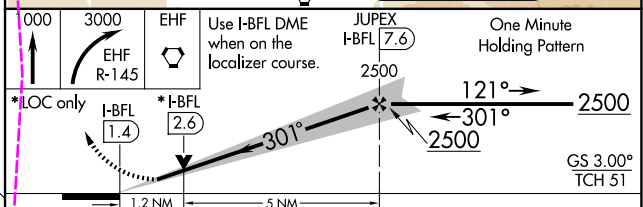
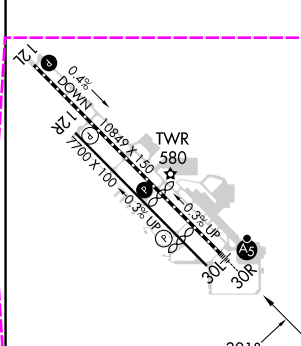
MALSR

MISSED APPROACH: Climb to 1000 then climbing right turn to 3000 on EHF VORTAC R-145 direct EHF VORTAC and hold, continue climb-in-hold to 3000.

ATIS 118.6	BAKERSFIELD APP CON ★ 118.8 284.625 118.9 270.3 (SOUTH) (NORTH)	BAKERSFIELD TOWER ★ 118.1 (CTAF) 257.8	GND CON 121.7	UNICOM 122.95
----------------------	--	--	-------------------------	-------------------------



ELEV 510	D	TDZE 493
----------	----------	----------



CATEGORY	A	B	C	D
S-ILS 30R	698/18	205 (200-1/2)		
S-LOC 30R	940/24	447 (500-1/2)	940/45	447 (500-7/8)
CIRCLING	960-1	450 (500-1)	960-1 1/2	1060-2
			450 (500-1 1/2)	550 (600-2)

BAKERSFIELD, CALIFORNIA
Amdt 31A 19JUL18

35°26'N-119°03'W

MEADOWS FLD (BFL)

ILS or LOC RWY 30R

ILS or LOC RWY 30R

MEADOWS'S FLD (BFL)

LOC/DME I-BFL 111.9 Chan 56	APP CRS 301°	Rwy Ldg 7430 TDZE 493 Apt Elev 510
---	------------------------	--

V Circling NA northeast of Rwy 12L-30R. DME Required. VDP NA with Porterville
A altimeter setting. When local altimeter setting not received, use Porterville altimeter
setting: increase DA to 790 and all visibilities to RVR 2200; increase all MDA 100
feet and visibility Cats C and D to RVR 6000. For inop ALS, increase S-LOC 30R
Cat A and B visibility to RVR 5000. For inop ALS when using Porterville altimeter
setting, increase S-ILS 30R all Cats visibility to RVR 5000.

MALSR
A5

MISSED APPROACH: Climb to 1000 then climbing right turn to 3000 on EHF VORTAC R-145 direct EHF VORTAC and hold, continue climb-in-hold to 3000.

ATIS 118.6	BAKERSFIELD APP CON ★ 118.9 270.3 (N) 118.8 284.625 (S)	BAKERSFIELD TOWER ★ 118.1 (CTAF) 0 257.8	GND CON 121.7	UNICOM 122.95
----------------------	---	--	-------------------------	-------------------------

SHAFTER
115.4 EHF ::::.
Chn 101

LOCALIZER 111.9
I-BFL
Chan 56

Procedure NA for arrivals at AMONT on
V459 southeast bound.
Procedure NA for arrivals at GMN VORTAC
on V137 southeast bound.

ELEV 510	D	TDZE 493
----------	----------	----------

078

9000 NoPT —

GORMAN
116.1 GMN 
Chan 108

CATEGORY	A	B	C	D
S-ILS 30R	698/18		205 (200-½)	
S-LOC 30R	940/24	447 (500-½)	940/45	447 (500-¾)
CIRCLING	960-1	450 (500-1)	960-1½ 450 (500-1½)	1060-2 550 (600-2)

BAKERSFIELD, CALIFORNIA
Amdt 31A 19JUL18

35°26'N-119°03'W

MEADOWS FLD (BFL)

ILS or LOC RWY 30R

SW-3, 07 AUG 2025 to 04 SEP 2025

SW-3, 07 AUG 2025 to 04 SEP 2025