

OSCODA, MICHIGAN

AL-32 (FAA)

22251

WAAS CH 97417 W07A	APP CRS 065°	Rwy Idg 11800 TDZE 633 Apt Elev 633
--	------------------------	--

RNAV (GPS) RWY 7

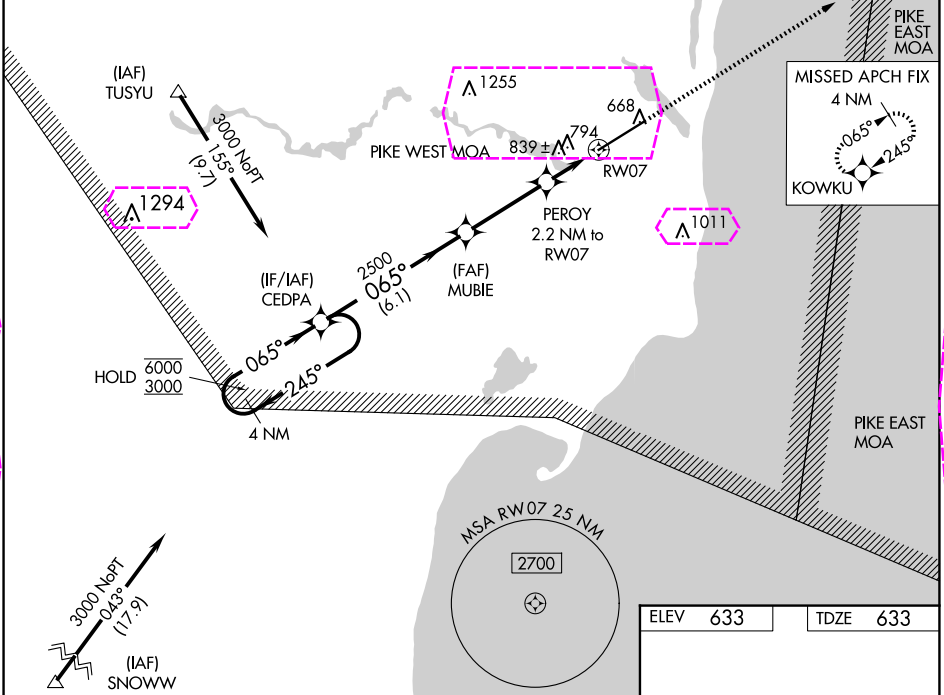
OSCODA/WURTSMITH (OSC)

RNP APCH:

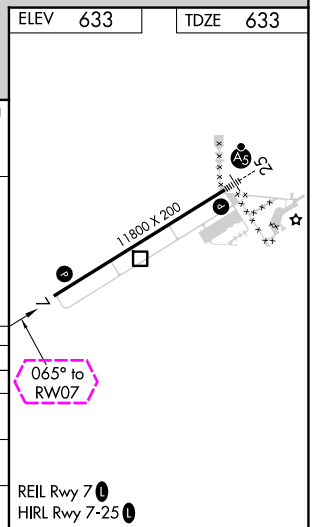
▼ Circling NA southeast of Rwy 7-25. Baro-VNAV and VDP NA when using Alpena altimeter setting. Rwy 7 helicopter visibility reduction below $\frac{3}{4}$ SM NA. For uncompensated Baro-VNAV systems, LNAV/VNAV NA below -16°C or above 54°C. When local altimeter setting not received use Alpena altimeter setting and increase all DA 96 feet and all MDA 100 feet. Increase LPV all Cats and LNAV Cat C and D visibility $\frac{1}{4}$ SM, and Circling Cat C visibility $\frac{1}{4}$ SM and Cat D visibility $\frac{1}{2}$ SM.

MISSED APPROACH:
Climb to 2500 direct
KOWKU and hold.

AWOS-3 118.7	MINNEAPOLIS CENTER 125.475 269.45	UNICOM 123.0 (CTAF)
------------------------	---	-------------------------------



4 NM Holding Pattern		VGSI and RNAV glidepath not coincident (VGSI Angle 3.00/TCH 75).		2500	KOWKU
CEDPA		MUBIE	PEROY 2.2 NM to RW07	*LNAV only.	
6000	← 245°	→ 065°	2500	*1.2 NM to RW07	RW07
3000	← 245°	→ 065°	2500	*1380	RW07
GP 3.00 TCH 55		6.1 NM	3.4 NM	1 NM	1.2
CATEGORY	A	B	C	D	
LPV DA	892- $\frac{3}{4}$		259 (300- $\frac{3}{4}$)		
LNAV/VNAV DA	1148-1 $\frac{3}{4}$		515 (600-1 $\frac{3}{4}$)		
LNAV MDA	1080-1	447 (500-1)	1080-1 $\frac{3}{8}$ 447 (500-1 $\frac{3}{8}$)	1080-1 $\frac{1}{2}$ 447 (500-1 $\frac{1}{2}$)	
CIRCLING	1140-1	507 (600-1)	1160-1 $\frac{1}{2}$ 527 (600-1 $\frac{1}{2}$)	1300-2 667 (700-2)	



OSCODA, MICHIGAN
Amdt 1A 08NOV18

44°27'N-83°24'W

OSCODA/WURTSMITH (OSC) RNAV (GPS) RWY 7

WAAS CH 97417 W07A	APP CRS 065°	Rwy Ldg 11800 TDZE 633 Apt Elev 633
--	------------------------	--

RNAV (GPS) RWY 7

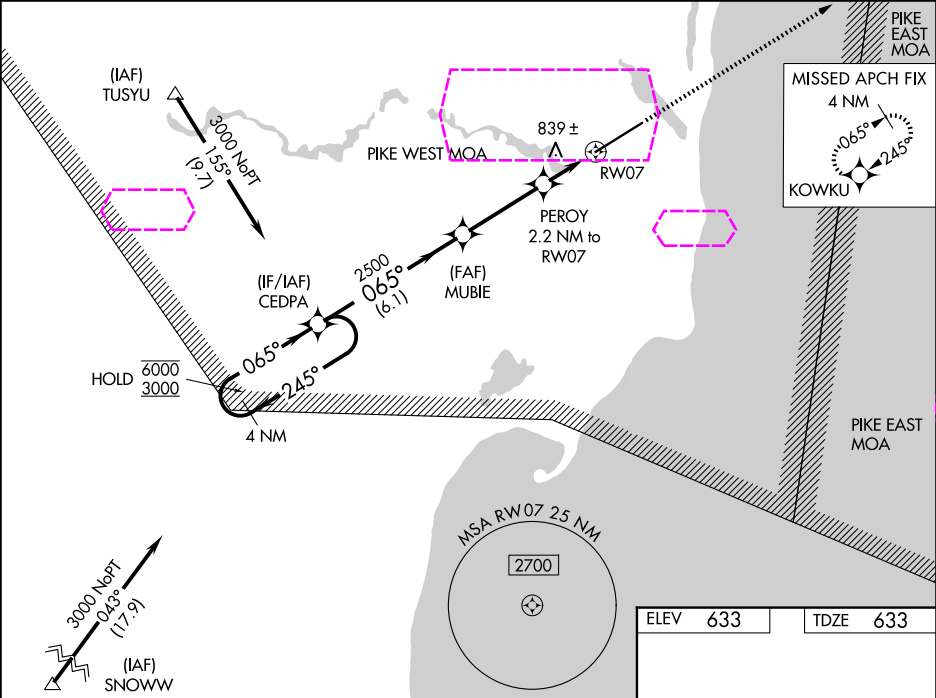
OSCODA/WURTSMITH (OSC)

RNP APCH:

⚠ Circling NA southeast of Rwy 7-25. Baro-VNAV and VDP NA when using Alpena altimeter setting. Rwy 7 helicopter visibility reduction below $\frac{3}{4}$ SM NA. For uncompensated Baro-VNAV systems, LNAV/VNAV NA below -16°C or above 54°C. When local altimeter setting not received use Alpena altimeter setting and increase all DA 96 feet and all MDA 100 feet. Increase LPV all Cats and LNAV Cat C and D visibility $\frac{1}{4}$ SM, and Circling Cat C visibility $\frac{1}{4}$ SM and Cat D visibility $\frac{1}{2}$ SM.

MISSED APPROACH:
Climb to 2500 direct KOWKU and hold.

AWOS-3 118.7	MINNEAPOLIS CENTER 125.475 269.45	UNICOM 123.0 (CTAF)
------------------------	---	-------------------------------



4 NM Holding Pattern

VGSI and RNAV glidepath not coincident (VGSI Angle 3.00/TCH 75).

2500 KOWKU

GP 3.00 TCH 55

CEDEPA

MUBIE

PEROY 2.2 NM to RW07

*1.2 NM to RW07

*1380

2500

6.1 NM

3.4 NM

1 NM

1.2

CATEGORY	A	B	C	D
LPV DA	892- $\frac{3}{4}$ 259 (300- $\frac{3}{4}$)			
LNAV/VNAV DA	1148-1 $\frac{3}{4}$ 515 (600-1 $\frac{3}{4}$)			
LNAV MDA	1080-1	447 (500-1)	1080-1 $\frac{3}{8}$ 447 (500-1 $\frac{3}{8}$)	1080-1 $\frac{1}{2}$ 447 (500-1 $\frac{1}{2}$)
CIRCLING	1140-1	507 (600-1)	1160-1 $\frac{1}{2}$ 527 (600-1 $\frac{1}{2}$)	1300-2 667 (700-2)

ELEV 633 TDZE 633

11800 X 200

065°

REIL Rwy 7

HIRL Rwy 7-25