

WAAS CH 82317 W25A	APP CRS 245°	Rwy Idg 11800 TDZE 624 Apt Elev 633
--	------------------------	--

RNAV (GPS) RWY 25

OSCODA/WURTSMITH (OSC)

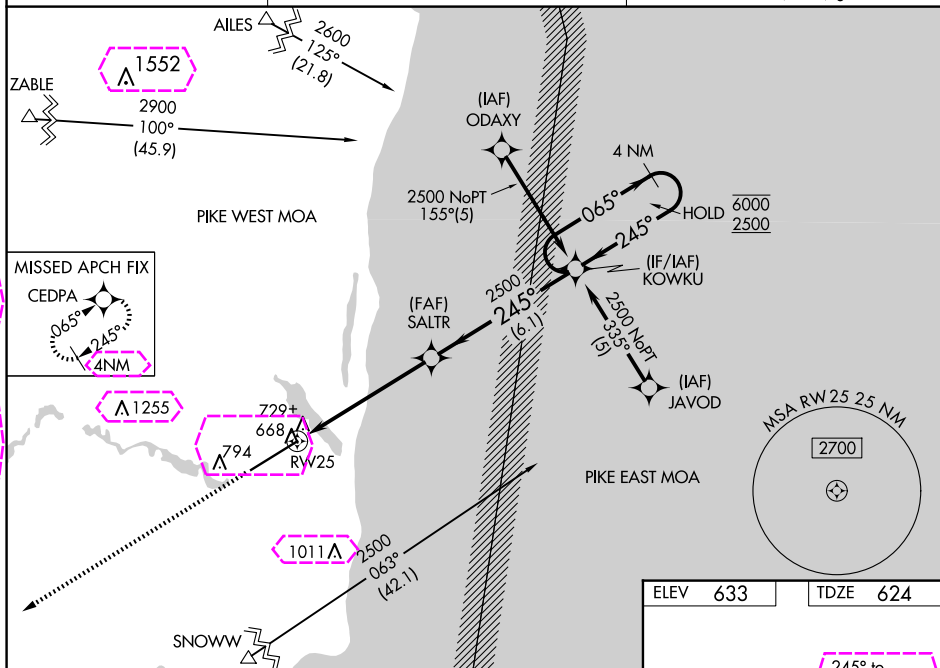
RNP APCH.

▼ Circling NA southeast of Rwy 7-25. Baro-VNAV and VDP NA when using Alpena alimeter setting. For uncompensated Baro-VNAV systems, LNAV/VNAV NA below -16°C or above 54°C. When local alimeter setting not received, use Alpena alimeter setting and increase all DA 96 feet and all MDA 100 feet. Increase LNAV/VNAV all Cats and LNAV and Circling Cat C visibility $\frac{1}{4}$ SM, and Circling Cat D visibility $\frac{1}{2}$ SM. For inop ALS, increase LNAV Cats C and D visibility to 1 SM. For inop ALS when using Alpena alimeter setting, increase LPV all Cats visibility to $\frac{7}{8}$ SM.



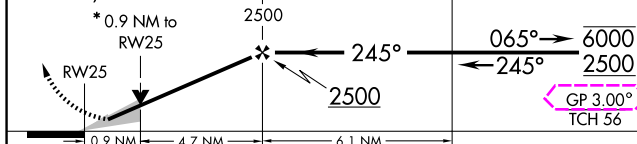
MISSED APPROACH.
Climb to 3000 direct
CEDPA and hold.

AWOS-3 118.7	MINNEAPOLIS CENTER 125.475 269.45	UNICOM 123.0 (CTAF) 0
------------------------	---	---------------------------------



3000	CEDPA	VGSI and RNAV glidepath not coincident (VGSI Angle 3.00/TCH 72).	4 NM Holding Pattern
------	-------	--	-------------------------

* LNAV only.



CATEGORY	A	B	C	D
LPV DA	824- $\frac{1}{2}$ 200 (200- $\frac{1}{2}$)			
LNAV/ VNAV DA	1004- $\frac{3}{4}$ 380 (400- $\frac{3}{4}$)			
LNAV MDA	980- $\frac{1}{2}$ 356 (400- $\frac{1}{2}$)	980- $\frac{5}{8}$ 356 (400- $\frac{5}{8}$)	980-1 356 (400-1)	
C CIRCLING	1140-1 507 (600-1)	1160-1 $\frac{1}{2}$ 527 (600-1 $\frac{1}{2}$)	1300-2 667 (700-2)	

ELEV	633		TDZE	624
------	-----	--	------	-----



REIL Rwy 7 **L**
HIRL Rwy 7-25 **L**

OSCODA, MICHIGAN
Orig-A 08NOV18

44°27'N-83°24'W

OSCODA/WURTSMITH (OSC)
RNAV (GPS) RWY 25

OSCODA, MICHIGAN

AL-32 (FAA)

25219

WAAS CH 82317 W25A	APP CRS 245°	Rwy Ldg 11800 TDZE 624 Apt Elev 633
--	------------------------	--

RNAV (GPS) RWY 25

OSCODA/WURTSMITH (OSC)

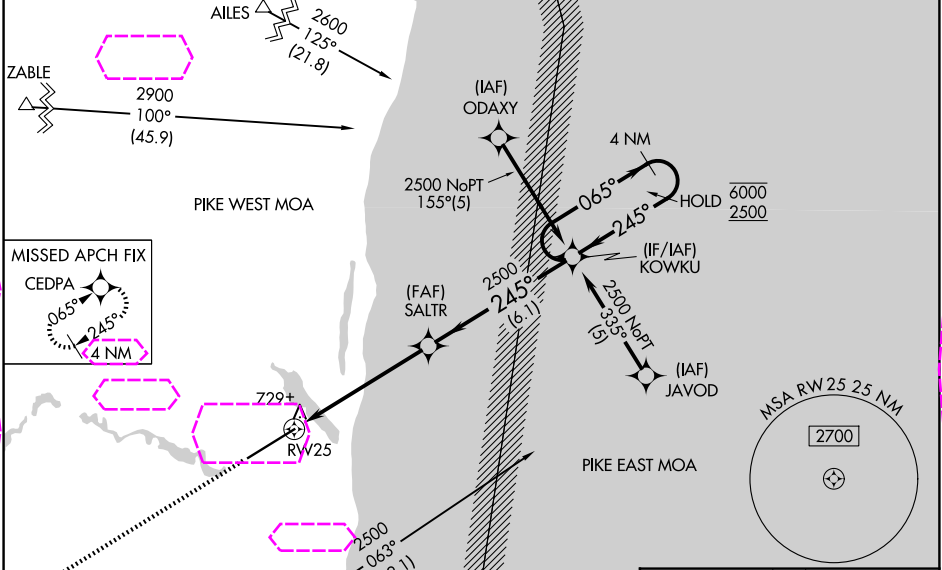
RNP APCH.

▼ Circling NA southeast of Rwy 7-25. Baro-VNAV and VDP NA when using Alpena altimeter setting.
For uncompensated Baro-VNAV systems, LNAV/VNAV NA below -16°C or above 54°C. When local altimeter setting not received, use Alpena altimeter setting and increase all DA 96 feet and all MDA 100 feet. Increase LNAV/VNAV all Cats and LNAV and Circling Cat C visibility ¼ SM, and Circling Cat D visibility ½ SM. For inop ALS, increase LNAV Cats C and D visibility to 1 SM. For inop ALS when using Alpena altimeter setting, increase LPV all Cats visibility to ¾ SM.

MALSR

MISSED APPROACH:
Climb to 3000 direct
CEDPA and hold.

AWOS-3 118.7	MINNEAPOLIS CENTER 125.475 269.45	UNICOM 123.0 (CTAF) 0
------------------------	---	---------------------------------



3000 CEDPA

VGSI and RNAV glidepath not coincident
(VGSI Angle 3.00/TCH 72).

4 NM Holding Pattern

*LNAV only.

CATEGORY	A	B	C	D
LPV DA	824-½ 200 (200-½)			
LNAV/VNAV DA	1004-¾ 380 (400-¾)			
LNAV MDA	980-½ 356 (400-½)	980-⅝ 356 (400-⅝)	980-1 356 (400-1)	
CIRCLING	1140-1 507 (600-1)	1160-1½ 527 (600-1½)	1300-2 667 (700-2)	

ELEV 633 TDZE 624

REIL Rwy 7 0
HIRL Rwy 7-25 0

OSCODA, MICHIGAN
Orig-A 08NOV18

44°27'N-83°24'W

OSCODA/WURTSMITH (OSC) RNAV (GPS) RWY 25