

LOC I-LJU <b>108.5</b>	APP CRS <b>245°</b>	Rwy Idg <b>11800</b> TDZE <b>624</b> Apt Elev <b>633</b>
---------------------------	------------------------	--

ILS or LOC RWY 25  
OSCODA/WURTSMITH (OSC)

DME required.

**T** Circling NA southeast of Rwy 7-25. For inop ALS, increase S-LOC Cats  
**A** NA C and D visibility to 1 SM. DME from ASP DME. Simultaneous reception  
 of I-LJU and ASP DME required.

MALSR

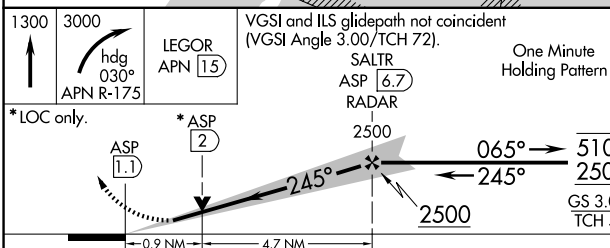
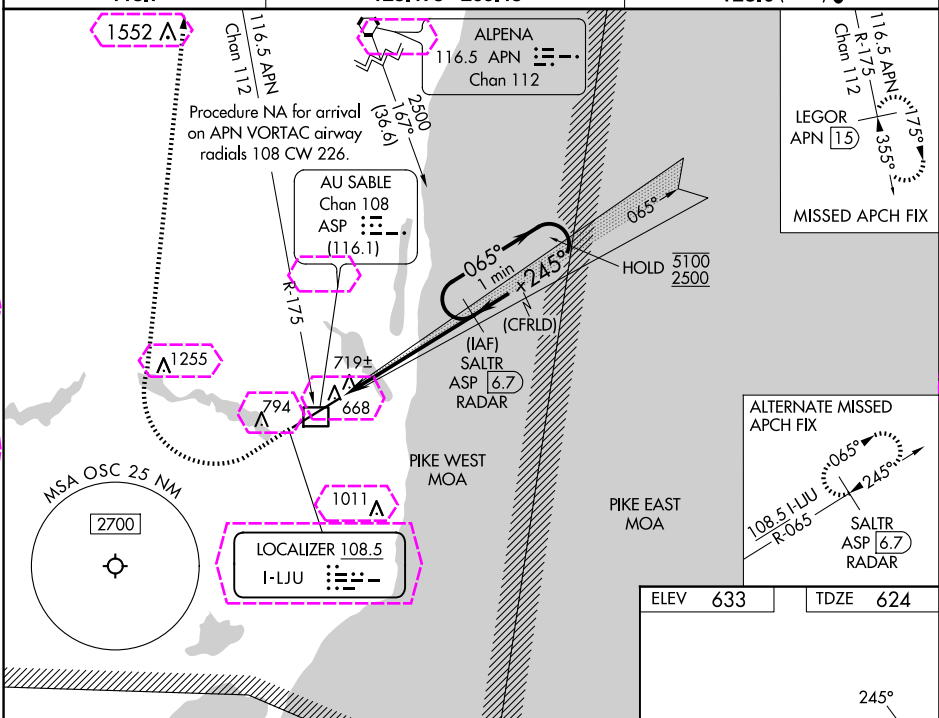


**MISSED APPROACH:** Climb to 1300 then climbing right turn to 3000 on heading 030° and on APN VORTAC R-175 to LEGOR/APN 15 DME and hold.

AWOS-3  
118.7

MINNEAPOLIS CENTER  
125.475 269.45

UNICOM  
123.0 (CTAF) 



CATEGORY	A	B	C	D
S-ILS 25	824-1/2 200 (200-1/2)			
S-LOC 25	980-1/2 356 (400-1/2)		980-5/8 356 (400-5/8)	
<b>C</b> CIRCLING	1140-1	507 (600-1)	1160-1/2 527 (600-1 1/2)	1300-2 667 (700-2)

REIL Rwy 7 **L**  
HIRL Rwy 7-25 **L**

OSCODA, MICHIGAN  
Amdt 4A 15AUG19

44°27'N-83°24'W

OSCODA/WURTSMITH (OSC)  
ILS or LOC RWY 25

OSCODA, MICHIGAN

AL-32 (FAA)

25219

LOC	I-LJU	APP CRS	Rwy Ldg
108.5	245°	11800	624
		TDZE	633
		Asp Elev	

# ILS or LOC RWY 25

OSCODA/WURTSMITH (OSC)

DME required.

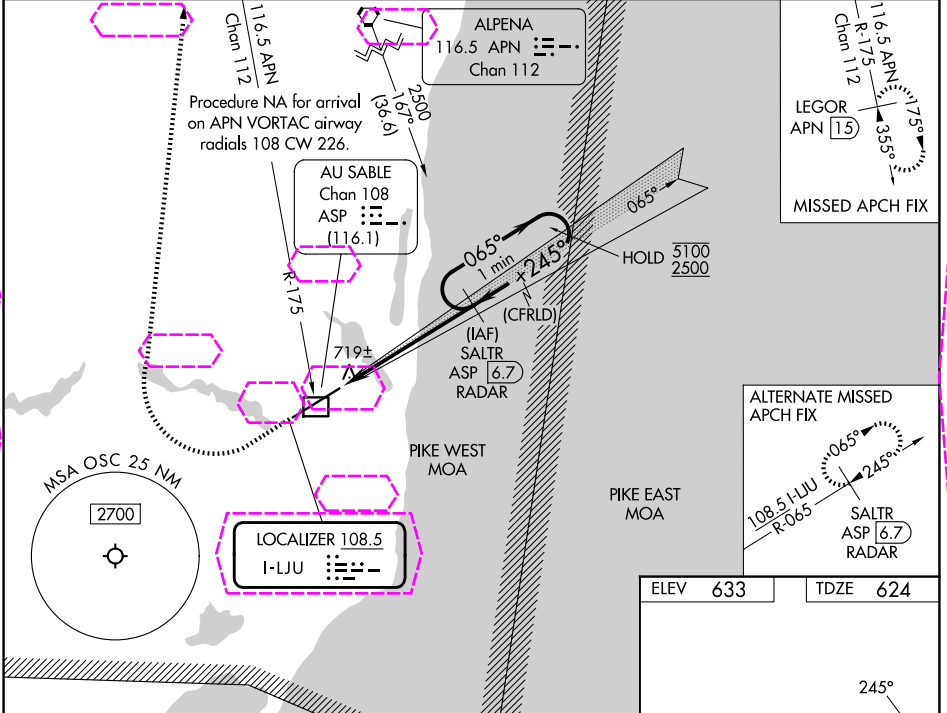
NA

Circling NA southeast of Rwy 7-25. For inop ALS, increase S-LOC Cats C and D visibility to 1 SM. DME from ASP DME. Simultaneous reception of I-LJU and ASP DME required.

MALSR

MISSED APPROACH: Climb to 1300 then climbing right turn to 3000 on heading 030° and on APN VORTAC R-175 to LEGOR/APN 15 DME and hold.

AWOS-3 118.7	MINNEAPOLIS CENTER 125.475 269.45	UNICOM 123.0 (CTAF) 0
-----------------	--------------------------------------	--------------------------



1300 3000

hdg 030°

APN R-175

LEGOR APN 15

VGSI and ILS glidepath not coincident (VGSI Angle 3.00/TCH 72).

One Minute Holding Pattern

\*LOC only.

ASP 1.1

\*ASP 2

2500

065°

245°

5100 2500

GS 3.00° TCH 56

CATEGORY	A	B	C	D
S-ILS 25	824-1/2 200 (200-1/2)			
S-LOC 25	980-1/2 356 (400-1/2)		980-5/8 356 (400-5/8)	
CIRCLING	1140-1 507 (600-1)		1160-1 1/2 527 (600-1 1/2)	1300-2 667 (700-2)

ELEV 633 TDZE 624

REIL Rwy 7 0  
HIRL Rwy 7-25 0

EC-1, 07 AUG 2025 to 04 SEP 2025

EC-1, 07 AUG 2025 to 04 SEP 2025

OSCODA, MICHIGAN  
Amdt 4A 15AUG19

44°27'N-83°24'W

OSCODA/WURTSMITH (OSC)  
ILS or LOC RWY 25