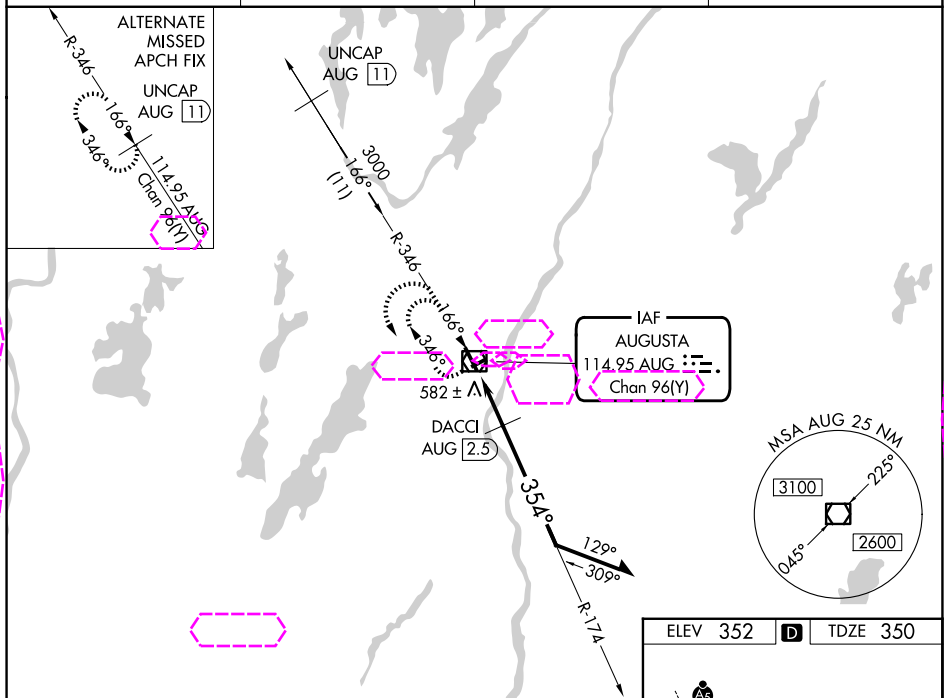


NE-1, 10 JUL 2025 to 07 AUG 2025

VOR RWY 35
AUGUSTA STATE (AUG)

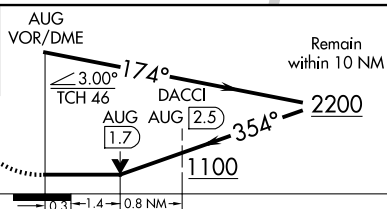
MISSED APPROACH: Climb to 1200 on AUG VOR/DME R-346, then climbing left turn to 2300 direct AUG VOR/DME and hold.

UNICOM
123.0 (CTAF) 

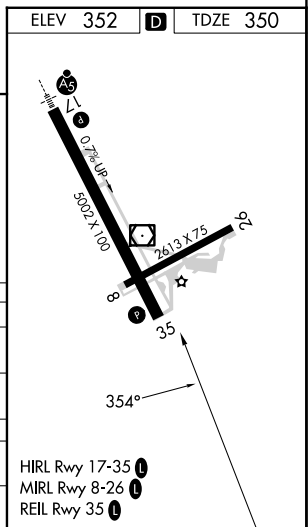


1200 ↑	AUG R-346	2300 ↶	AUG VOR/DME □		Remain within 10 NM
-----------	--------------	-----------	---------------------	--	------------------------

VGSI and descent
angles not coincident
(VGSI Angle 3.00/TCH 40).



CATEGORY	A	B	C	D
S-35	1100-1 750 (800-1)	1100-1¼ 750 (800-1¼)	1100-2	750 (800-2)
CIRCLING	1100-1 748 (800-1)	1100-1¼ 748 (800-1¼)	1100-2¼ 748 (800-2¼)	1160-2½ 808 (900-2½)
DACCI FIX MINIMUMS				
S-35	840-1	490 (500-1)	840-1⅜	490 (500-1⅜)
CIRCLING	960-1 608 (700-1)	980-1 628 (700-1)	980-1¼ 628 (700-1¼)	1160-2½ 808 (900-2½)



44°19'N-69°48'W

AUGUSTA STATE (AUG)
VOR RWY 35

NE-1, 07 AUG 2025 to 04 SEP 2025