

AUGUSTA, MAINE

AL-29 (FAA)

23222

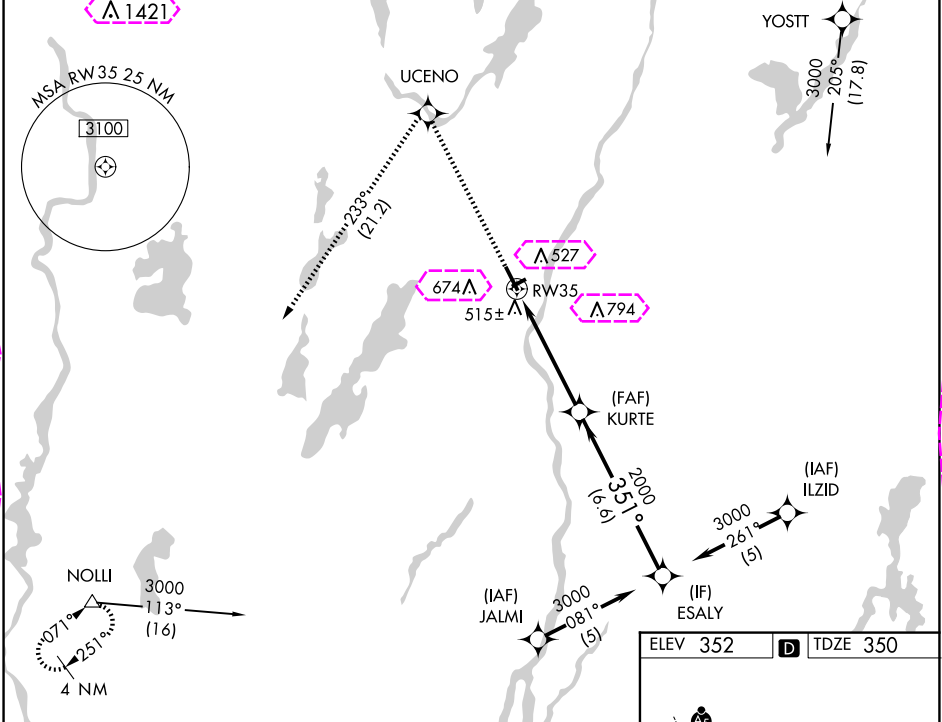
WAAS CH 70406 W35A	APP CRS 351°	Rwy Idg TDZE Apt Elev	5002 350 352
--	------------------------	-----------------------------	---

RNAV (GPS) RWY 35

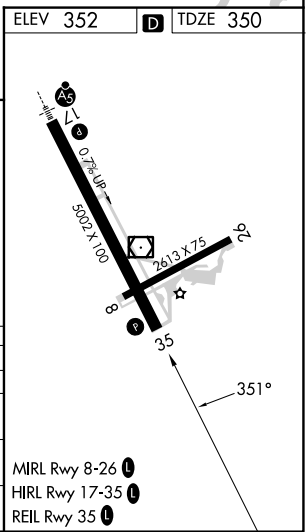
AUGUSTA STATE (AUG)

RNP APCH.	MISSED APPROACH: Climb to 3000 direct UCENO and left turn on track 233° to NOLLI and hold.
Circling to Rwy 26 NA at night. Rwy 35 helicopter visibility reduction below $\frac{3}{4}$ SM NA. For uncompensated Baro-VNAV systems, LNAV/VNAV NA below -1.5°C or above 54°C.	

ASOS 118.325	PORTLAND APP CON ★ 128.35 299.2	CLNC DEL 119.95 299.2	UNICOM 123.0 (CTAF) ①
------------------------	---	---------------------------------	---------------------------------



3000	UCENO	tr 233°	NOLLI	VGSI and RNAV glidepath not coincident (VGSI Angle 3.00/TCH 40).
* LNAV only.				
* 1.4 NM to RW35				
RW35				
KURTE				
ESALY				
351°				
3000				
2000				
GP 3.00° TCH 55				
1.4 3.6 NM 6.6 NM				
CATEGORY	A	B	C	D
LPV DA	610-1 260 (300-1)			
LNAV/VNAV DA	850-1 500 (500-1)			
LNAV MDA	840-1 490 (500-1)	840-1 490 (500-1)	840-1 490 (500-1)	840-1 490 (500-1)
CIRCLING	880-1 528 (600-1)	980-1 628 (700-1)	1160-2 808 (900-2)	1160-2 808 (900-2)



AUGUSTA, MAINE
Orig-D 11AUG22

44°19'N-69°48'W

AUGUSTA STATE (AUG)
RNAV (GPS) RWY 35

NE-1, 10 JUL 2025 to 07 AUG 2025

NE-1, 10 JUL 2025 to 07 AUG 2025

AUGUSTA STATE (AUG)
RNAV (GPS) RWY 35

NE-1, 07 AUG 2025 to 04 SEP 2025