

AUGUSTA, MAINE

AL-29 (FAA)

24081

WAAS CH 70720 W17A	APP CRS 171°	Rwy Idg 5002 TDZE 348 Apt Elev 352
--	------------------------	---

RNAV (GPS) RWY 17

AUGUSTA STATE (AUG)

RNP APCH - GPS.

▼

▲

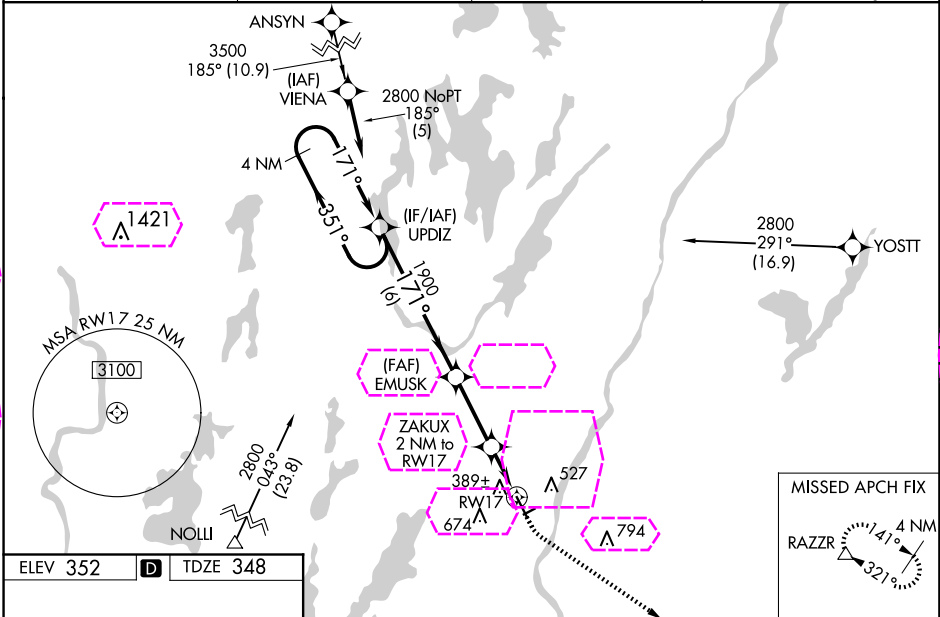
For inop MALSR, increase LNAV/VNAV all Cats visibility to 1 mile. For inop MALSR when using Waterville altimeter setting, increase LNAV/VNAV all Cats visibility to 1½ mile. VDP and Baro-VNAV NA with Waterville altimeter setting. When local altimeter setting not received, use Waterville altimeter setting: increase LPV DA to 583 feet, LNAV/VNAV DA to 710 feet, and visibility LNAV/VNAV all Cats ½ SM; increase all MDA 40 feet and visibility LNAV Cats C and D ½ SM, and Circling Cat D ¼ SM. For uncompensated Baro-VNAV systems, LNAV/VNAV NA below -30°C or above 41°C. Circling Rwy 8, 26 NA at night.

MALSR

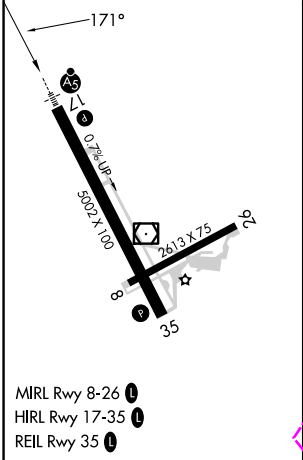
▲

MISSED APPROACH:
Climb to 800 then
climbing left turn to
3000 direct RAZZR
and hold.

ASOS 118.325	PORTLAND APP CON ★ 128.35 299.2	CLNC DEL 119.95 299.2	UNICOM 123.0 (CTAF) 0
------------------------	---	---------------------------------	--



ELEV 352	D	TDZE 348
----------	----------	----------



4 NM Holding Pattern UPDIZ				VGSI and RNAV glidepath not coincident (VGSI Angle 3.00/TCH 53).				800	3000	RAZZR
2800				EMUSK				ZAKUX 2 NM to RW17		
GP 3.00° TCH 60				1900				0.9 NM to RW17		
351°				171°				RW17		
6 NM				2.8 NM				1.1 NM		
CATEGORY				A				B		
LPV DA				548-½				200 (200-½)		
LNAV/VNAV DA				675-5/8				327 (400-5/8)		
LNAV MDA				640-½				292 (300-½)		
CIRCLING				960-1				980-1		
				608 (700-1)				628 (700-1)		
				980-1¾				1160-2½		
				628 (700-1¾)				808 (900-2½)		

AUGUSTA, MAINE
Orig-D 21MAR24

44°19'N-69°48'W

AUGUSTA STATE (AUG)
RNAV (GPS) RWY 17

AUGUSTA, MAINE

AL-29 (FAA)

25219

WAAS CH 70720 W17A	APP CRS 171°	Rwy Ldg TDZE 348 Apt Elev 352
--	------------------------	---

RNAV (GPS) RWY 17

AUGUSTA STATE (AUG)

RNP APCH - GPS.

▼

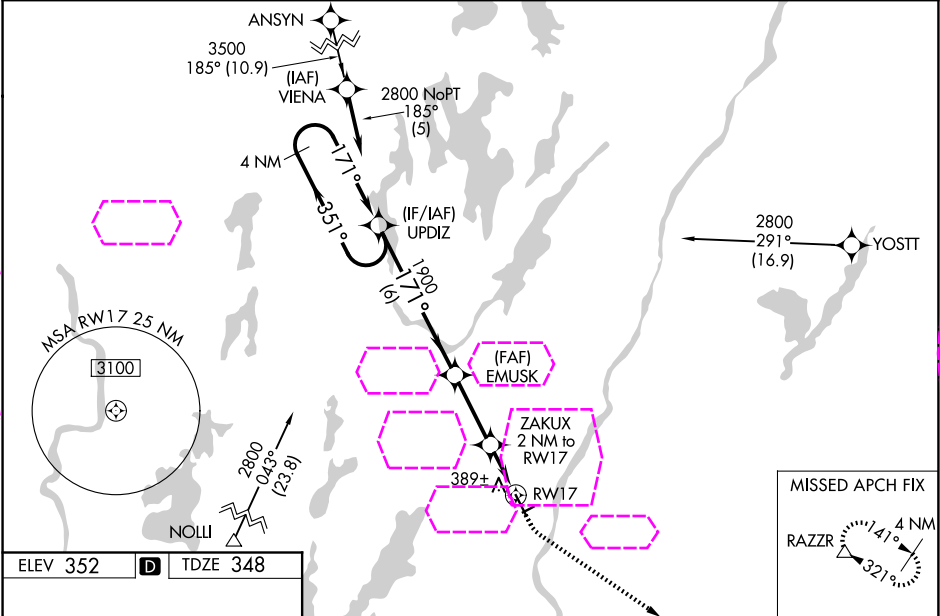
▲

For inop MALSR, increase LNAV/VNAV all Cats visibility to 1 mile. For inop MALSR when using Waterville altimeter setting, increase LNAV/VNAV all Cats visibility to 1½ mile. VDP and Baro-VNAV NA with Waterville altimeter setting. When local altimeter setting not received, use Waterville altimeter setting: increase LPV DA to 583 feet, LNAV/VNAV DA to 710 feet, and visibility LNAV/VNAV all Cats ½ SM; increase all MDA 40 feet and visibility LNAV Cats C and D ½ SM, and Circling Cat D ¼ SM. For uncompensated Baro-VNAV systems, LNAV/VNAV NA below -30°C or above 41°C. Circling Rwy 8, 26 NA at night.

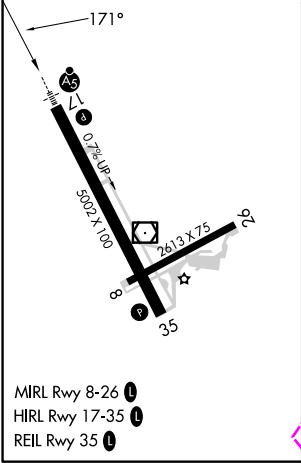
MALSR

MISSED APPROACH:
Climb to 800 then
climbing left turn to
3000 direct RAZZR
and hold.

ASOS 118.325	PORTLAND APP CON ★ 128.35 299.2	CLNC DEL 119.95 299.2	UNICOM 123.0 (CTAF) 0
------------------------	---	---------------------------------	---------------------------------



ELEV 352	D	TDZE 348
----------	----------	----------



4 NM Holding Pattern		VGSI and RNAV glidepath not coincident (VGSI Angle 3.00/TCH 53).		800	3000	RAZZR
2800		351°	171°	1900	1000	
GP 3.00°		TCH 60		6 NM	2.8 NM	1.1 NM
CATEGORY	A	B	C	D		
LPV DA	548-½		200 (200-½)			
LNAV/VNAV DA	675-5⁄8		327 (400-5⁄8)			
LNAV MDA	640-½		292 (300-½)			
CIRCLING	960-1 608 (700-1)	980-1 628 (700-1)	980-1¾ 628 (700-1¾)	1160-2½ 808 (900-2½)		

AUGUSTA, MAINE
Orig-D 21MAR24

44°19'N-69°48'W

RNAV (GPS) RWY 17

NE-1, 07 AUG 2025 to 04 SEP 2025

NE-1, 07 AUG 2025 to 04 SEP 2025