

AUGUSTA, MAINE

AL-29 (FAA)

24081

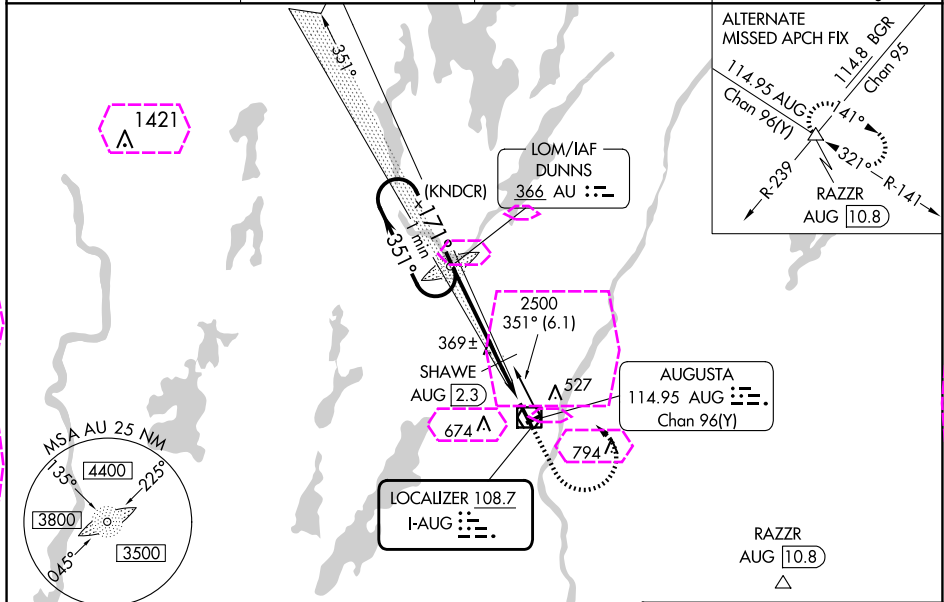
LOC I-AUG 108.7	APP CRS 171°	Rwy Idg 5002 TDZE 348 Apt Elev 352
---------------------------	------------------------	---

ILS or LOC RWY 17

AUGUSTA STATE (AUG)

ADF required.	MALSR	MISSED APPROACH: Climb to 1000 then climbing left turn to 2500 direct DUNNS LOM and hold.
Localizer unusable from 0.5 NM to threshold above 1500 feet. When local altimeter setting not received, use Waterville altimeter setting; increase S-ILS 17 DA to 583; increase all MDAs 40 feet and visibility S-LOC 17 Cat C and D ½ SM, and Circling Cat D ¼ SM; SHAWE fix minimums increase S-LOC 17 Cat C and D visibility ½ SM, and Circling Cat D visibility ¼ SM. Glideslope unusable below 430 feet. Circling Rwy 8, 26 NA at night. # DME from AUG VOR/DME.		

ASOS 118.325	PORTLAND APP CON ★ 128.35 299.2	CLNC DEL 119.95 299.2	UNICOM 123.0 (CTAF)
------------------------	---	---------------------------------	-------------------------------



One Minute Holding Pattern					ELEV 352 D TDZE 348	
VGSI and ILS glidepath not coincident (VGSI Angle 3.00/TCH 53). AU LOM					1000 2500 AU	
2500 ← 351° 171° → 2300 GS 3.00° TCH 61					171°	
2173					5002 X 100	
3.9 NM 1.7 NM					2613 X 75	
*LOC only, 940 when using Waterville altimeter setting.					35	
SHAWE AUG 2.3					8	
CATEGORY	A	B	C	D		
S-ILS 17	548-½ 200 (200-½)					
S-LOC 17	900-½	552 (600-½)	900-1¼	552 (600-1¼)		
CIRCLING	940-1 588 (600-1)	980-1 628 (700-1)	980-1¾ 628 (700-1¾)	1160-2½ 808 (900-2½)	HIRL Rwy 17-35 MIRL Rwy 8-26 REIL Rwy 35	
SHAWE FIX MINIMUMS #					FAF to MAP 5.6 NM	
S-LOC 17	620-½ 272 (300-½)					
CIRCLING	940-1 588 (600-1)	980-1 628 (700-1)	980-1¾ 628 (700-1¾)	1160-2½ 808 (900-2½)	Knots 60 90 120 150 180 Min:Sec 5:36 3:44 2:48 2:14 1:52	

AUGUSTA, MAINE
Amdt 3D 21MAR24

44°19'N-69°48'W

AUGUSTA STATE (AUG)

ILS or LOC RWY 17

AUGUSTA, MAINE

AL-29 (FAA)

25219

LOC I-AUG 108.7	APP CRS 171°	Rwy Ldg TDZE Apt Elev	5002 348 352
---------------------------	------------------------	-----------------------------	---

ILS or LOC RWY 17
AUGUSTA STATE (AUG)

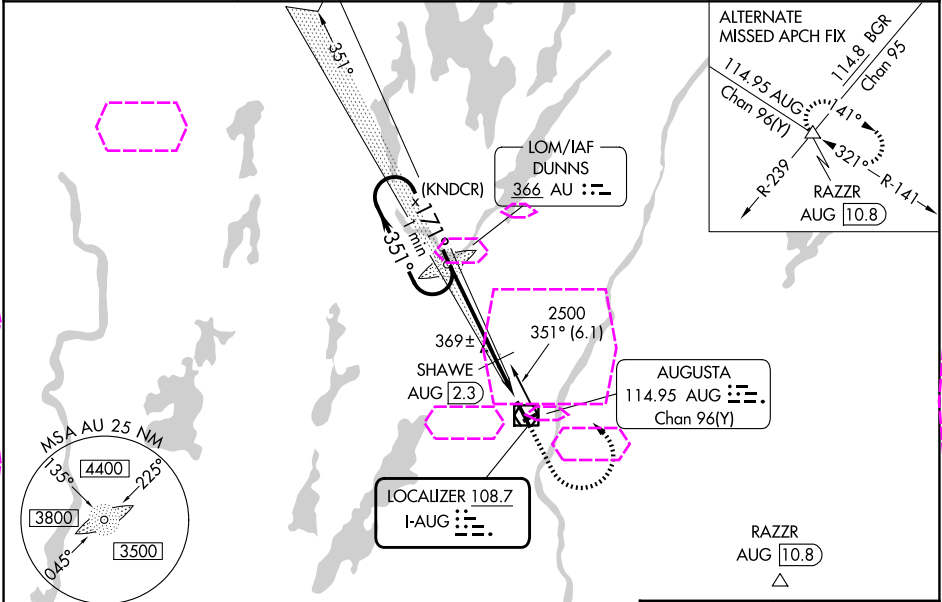
ADF required.

Localizer unusable from 0.5 NM to threshold above 1500 feet. When local altimeter setting not received, use Waterville altimeter setting; increase S-ILS 17 DA to 583; increase all MDAs 40 feet and visibility S-LOC 17 Cat C and D 1/8 SM, and Circling Cat D 1/4 SM; SHAWE fix minimums increase S-LOC 17 Cat C and D visibility 1/8 SM, and Circling Cat D visibility 1/4 SM. Glideslope unusable below 430 feet. Circling Rwy 8, 26 NA at night. # DME from AUG VOR/DME.

MALSR

MISSED APPROACH: Climb to 1000 then climbing left turn to 2500 direct DUNNS LOM and hold.

ASOS 118.325	PORTLAND APP CON ★ 128.35 299.2	CLNC DEL 119.95 299.2	UNICOM 123.0 (CTAF)
------------------------	---	---------------------------------	-------------------------------



One Minute Holding Pattern

VGSI and ILS glidepath not coincident (VGSI Angle 3.00/TCH 53).

1000 2500 AU

2500 2300 2173 171° 351°

GS 3.00° TCH 61

SHAWE AUG 2.3

*LOC only, 940 when using Waterville altimeter setting.

*900

3.9 NM 1.7 NM

CATEGORY	A	B	C	D
S-ILS 17	548-1/2 200 (200-1/2)			
S-LOC 17	900-1/2 552 (600-1/2)	900-1 1/4 552 (600-1 1/4)		
CIRCLING	940-1 588 (600-1)	980-1 628 (700-1)	980-1 3/4 628 (700-1 3/4)	1160-2 1/2 808 (900-2 1/2)
SHAWE FIX MINIMUMS #				
S-LOC 17	620-1/2 272 (300-1/2)			
CIRCLING	940-1 588 (600-1)	980-1 628 (700-1)	980-1 3/4 628 (700-1 3/4)	1160-2 1/2 808 (900-2 1/2)

ELEV 352 D TDZE 348

171°

5002 X 100

2613 X 75

35

HIRL Rwy 17-35

MIRL Rwy 8-26

REIL Rwy 35

FAF to MAP 5.6 NM

Knots	60	90	120	150	180
Min:Sec	5:36	3:44	2:48	2:14	1:52

AUGUSTA, MAINE
Amdt 3D 21MAR24

44°19'N-69°48'W

AUGUSTA STATE (AUG)
ILS or LOC RWY 17

NE-1, 07 AUG 2025 to 04 SEP 2025

NE-1, 07 AUG 2025 to 04 SEP 2025