

ATLANTA, GEORGIA

AL-26 (FAA)

25051

WAAS CH <b>99300</b> <b>W08B</b>	APP CRS <b>095°</b>	Rwy Idg <b>8800</b> TDZE <b>1015</b> Apt Elev <b>1026</b>
--	------------------------	---

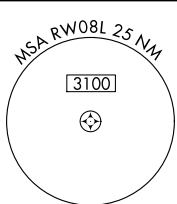
# RNAV (GPS) Y RWY 8L

HARTSFIELD/JACKSON ATLANTA INTL (ATL)

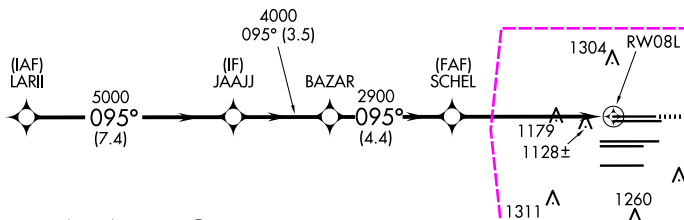
▼ For uncompensated Baro-VNAV systems, LNAV/VNAV NA below -7°C (20°F) or above 54°C (130°F). DME/DME RNP-0.3 NA. For inop ALSF-2, increase LNAV/VNAV all Cnts visibility to 1¼ miles. Helicopter visibility reduction below RVR 4000 NA. LNAV procedure NA during simultaneous operations. Simultaneous approach authorized with Rwy 9L or 9R or 10, or Rwy 8L and 10. Use of FD or AP providing RNAV track guidance required during simultaneous operations.

ALSF-2 MISSED APPROACH:  
Climb to 1500 then  
climbing left turn to  
3500 direct TROYS  
and hold.

D-ATIS ARR <b>119.65</b> DEP <b>125.55</b>	ATLANTA APP CON <b>127.9 379.9</b>	ATLANTA TOWER 8L-26R 8R-26L 9L-27R 9R-27L 10-28 RWYS <b>119.1 125.325 123.85 119.3 119.5 254.4</b>						ALL RWYS <b>121.9</b>	GND CON 10-28 RWYS <b>121.75 121.65 254.4</b>	ALL RWYS
--	--	--	--	--	--	--	--	-----------------------------	---	-------------



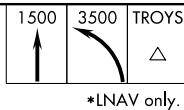
CLNC DEL <b>118.1</b>	CPDLC
-----------------------------	-------



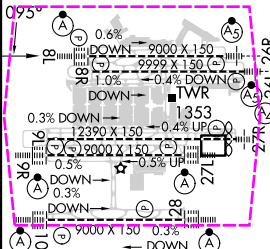
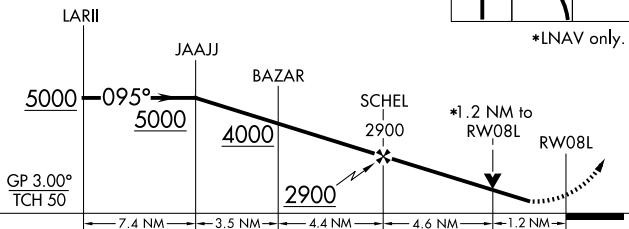
RADAR REQUIRED

ELEV 1026 TDZE 1015

VGSI and RNAV glidepath not coincident (VGSI Angle 3.00/TCH 70).



\*LNAV only.



CATEGORY	A	B	C	D
LPV DA		1215/18	200 (200-½)	
LNAV/VNAV DA		1404/45	389 (400-¾)	
LNAV MDA	1460/24	445 (500-½)	1460/45	445 (500-¾)

HIRL all Rwy  
TDZ/CL Rwy 8L, 9R,  
10, 26R, 27L and 28

ATLANTA, GEORGIA  
Amdt 4A 12OCT17

HARTSFIELD/JACKSON ATLANTA INTL (ATL)  
33°38'N-84°26'W  
**RNAV (GPS) Y RWY 8L**

SE-4, 10 JUL 2025 to 07 AUG 2025

SE-4, 10 JUL 2025 to 07 AUG 2025

ATLANTA, GEORGIA

AL-26 (FAA)

25219

WAAS CH <b>99300</b> <b>W08B</b>	APP CRS <b>095°</b>	Rwy Ldg TDZE <b>1015</b> Apt Elev <b>1026</b>
--	------------------------	---

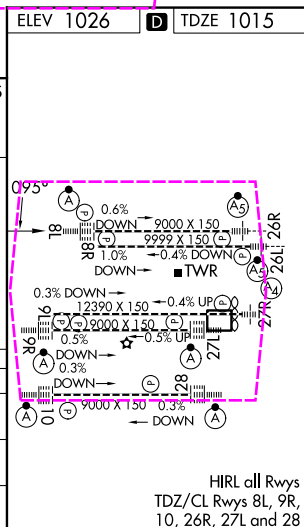
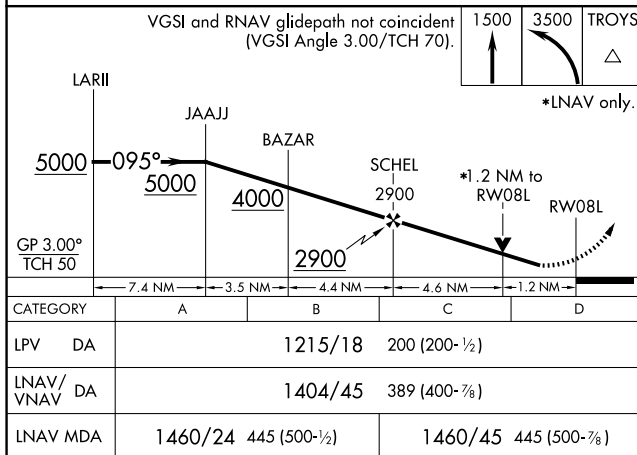
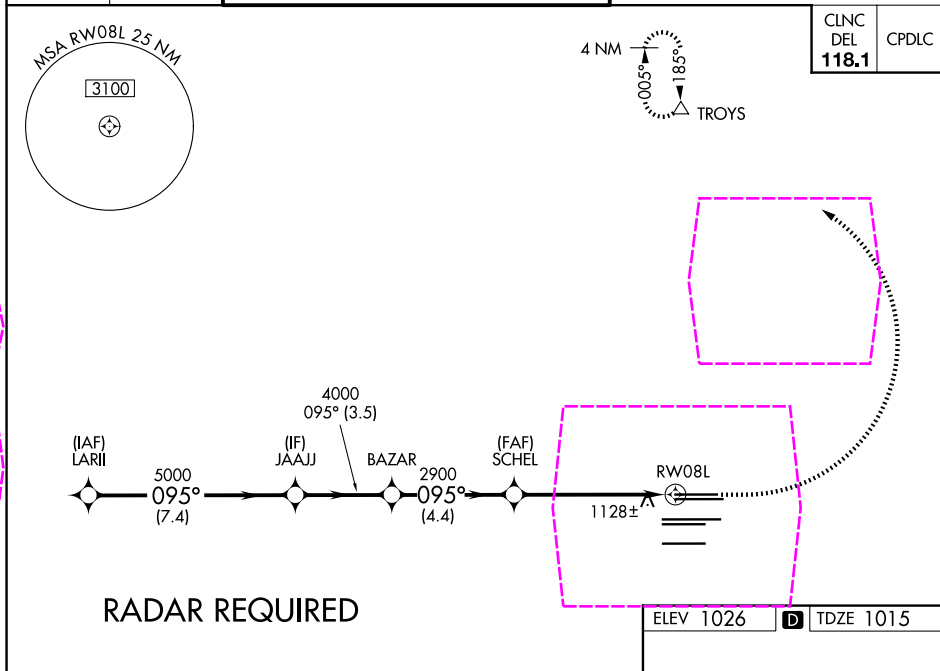
# RNAV (GPS) Y RWY 8L

HARTSFIELD/JACKSON ATLANTA INTL (ATL)

▼ For uncompensated Baro-VNAV systems, LNAV/VNAV NA below -7°C (20°F) or above 54°C (130°F). DME/DME RNP-0.3 NA. For inop ALSF-2, increase LNAV/VNAV all Cats visibility to 1¼ miles. Helicopter visibility reduction below RVR 4000 NA. LNAV procedure NA during simultaneous operations. Simultaneous approach authorized with Rwy 9L or 9R or 10, or Rwys 9L and 10. Use of FD or AP providing RNAV track guidance required during simultaneous operations.

ALSF-2 MISSED APPROACH:  
Climb to 1500 then  
climbing left turn to  
3500 direct TROYS  
and hold.

D-ATIS ARR <b>119.65</b> DEP <b>125.55</b>	ATLANTA APP CON <b>127.9 379.9</b>	ATLANTA TOWER 8L-26R 8R-26L 9L-27R 9R-27L 10-28 RWYS <b>119.1 125.325 123.85 119.3 119.5 254.4</b>					ALL RWYS <b>121.9</b>	GND CON <b>121.75</b>	ALL RWYS <b>121.65 254.4</b>
--	--	--	--	--	--	--	-----------------------------	--------------------------	------------------------------------



ATLANTA, GEORGIA  
Amdt 4A 12OCT17

HARTSFIELD/JACKSON ATLANTA INTL (ATL)  
33°38'N-84°26'W  
**RNAV (GPS) Y RWY 8L**

SE-4, 07 AUG 2025 to 04 SEP 2025

SE-4, 07 AUG 2025 to 04 SEP 2025