



ATLANTA, GEORGIA

AL-26 (FAA)

25219

WAAS CH <b>61299</b> <b>W28A</b>	APP CRS <b>275°</b>	Rwy Ldg TDZE <b>998</b> Apt Elev <b>1026</b>
--	------------------------	--

# RNAV (GPS) Y RWY 28

HARTSFIELD/JACKSON ATLANTA INTL (ATL)

**⚠** For uncompensated Baro-VNAV systems, LNAV/VNAV NA below -7°C (20°F) or above 54°C (130°F). Simultaneous approach authorized with Rwy 26R or 26L or 27R, or Rwys 26R and 27R. DME/DME RNP-0.3 NA. LNAV procedure NA during simultaneous operations. Use of FD or AP providing RNAV track guidance required during simultaneous operations.

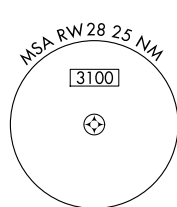
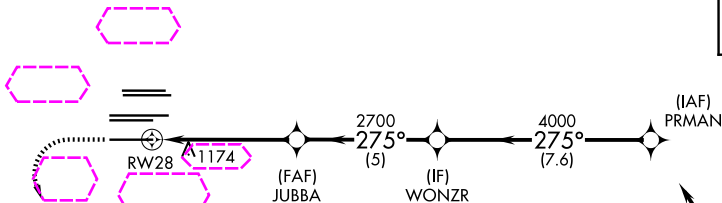
ALSF-2

**A**

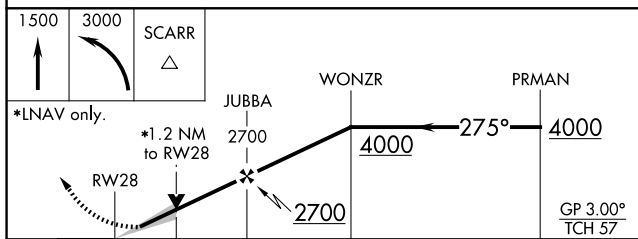
**MISSED APPROACH:**  
Climb to 1500 then climbing left turn to 3000 direct SCARR and hold.

D-ATIS	ATLANTA	ATLANTA TOWER					ALL	GND CON		ALL			
ARR	APP CON	8L-26R	8R-26L	9L-27R	9R-27L	10-28	RWYS	(8L-26R,8R-26L)	(9L-27R,9R-27L)	10-28	RWYS		
DEP	119.65	127.9	379.9	119.1	125.325	123.85	119.3	119.5	254.4	121.9	121.75	121.65	254.4

CINC	CPDLC
<b>DEL 118.1</b>	



**RADAR REQUIRED**



CATEGORY	A	B	C	D
LPV DA	1198/18	200 (200-½)		
LNAV/VNAV DA	1250/24	252 (300-½)		
LNAV MDA	1440/24	442 (500-½)	1440/45	442 (500-¾)

ELEV 1026 **D** TDZE 998

**GP 3.00° TCH 57**

**HIRL all Rwys**  
TDZ/CL Rwys 8L, 9R, 10, 26R, 27L and 28

ATLANTA, GEORGIA  
Amdt 4A 12OCT17

HARTSFIELD/JACKSON ATLANTA INTL (ATL)  
33°38'N-84°26'W  
**RNAV (GPS) Y RWY 28**

SE-4, 07 AUG 2025 to 04 SEP 2025

SE-4, 07 AUG 2025 to 04 SEP 2025