



ATLANTA, GEORGIA

AL-26 (FAA)

25219

WAAS CH <b>61000</b> <b>W26B</b>	APP CRS <b>275°</b>	Rwy Ldg TDZE <b>990</b> Apt Elev <b>1026</b>
--	------------------------	--

RNAV (GPS) Y RWY 26R

HARTSFIELD/JACKSON ATLANTA INTL (ATL)

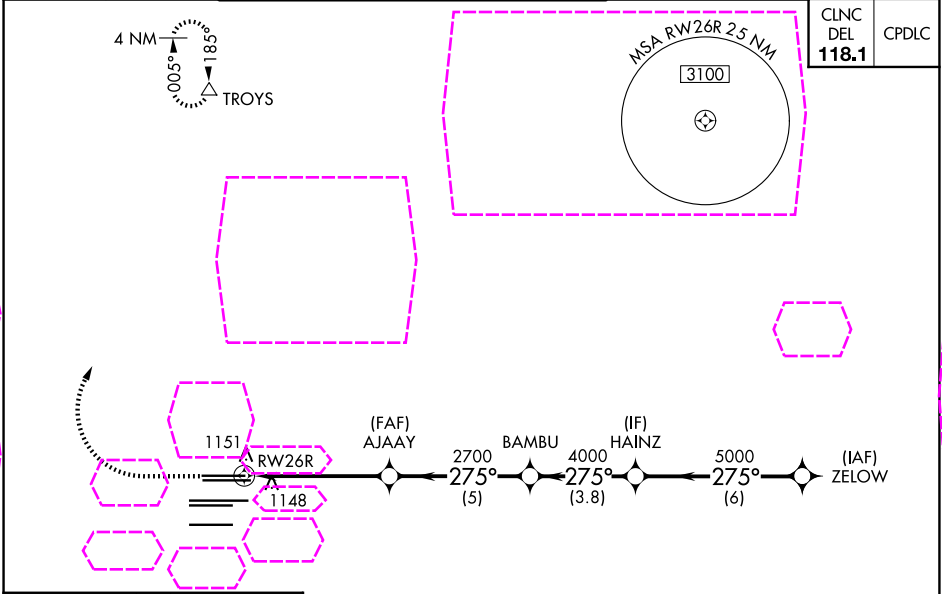
For uncompensated Baro-VNAV systems, LNAV/VNAV NA below -7°C (20°F) or above 54°C (130°F). DME/DME RNP-0.3 NA. Simultaneous approach authorized with Rwy 27R or 27L or 28, or Rwys 27R and 28. LNAV procedure NA during simultaneous operations. Use of FD or AP providing RNAV track guidance required during simultaneous operations.

MALSRL

MISSED APPROACH:

Climb to 1500 then climbing right turn to 3500 direct TROYS and hold.

D-ATIS ARR <b>119.65</b> DEP <b>125.55</b>	ATLANTA APP CON <b>127.9 379.9</b>	ATLANTA TOWER 8L-26R 8R-26L 9L-27R 9R-27L 10-28 RWYS <b>119.1 125.325 123.85 119.3 119.5 254.4</b>						ALL RWYS <b>121.9</b>	GND CON (8L-26R, 8R-26L) (9L-27R, 9R-27L) 10-28 <b>121.75 121.65 254.4</b>	ALL RWYS
--	--	--	--	--	--	--	--	-----------------------------	--	-------------



ELEV 1026	<b>D</b>	TDZE 990
-----------	----------	----------

RADAR REQUIRED

The radar chart shows the approach path with various navigational aids and altitudes. Key features include:

- Altitudes:** 1500, 3500, 2700, 4000, 5000, and 5500 feet.
- Waypoints:** AJAAY, BAMBU, HAINZ, and ZELOW.
- Obstacles:** Several obstacles are shown, including a prominent one at 1151 feet near RWY 26R and another at 1148 feet.

VGSI and RNAV glidepath not coincident (VGSI Angle 3.00°/TCH 69°).

**\*LNAV only.**

**\*1.3 NM to RWY 26R**

1.3 3.9 NM 5 NM 3.8 NM 6 NM

CATEGORY	A	B	C	D
LPV DA	1190/18 200 (200-½)			
LNAV/VNAV DA	1426/50 436 (500-1)			
LNAV MDA	1460/24	470 (500-½)	1460/50	470 (500-1)

ATLANTA, GEORGIA  
Amdt 4A 12OCT17

HARTSFIELD/JACKSON ATLANTA INTL (ATL)  
33°38'N-84°26'W  
RNAV (GPS) Y RWY 26R