

ATLANTA, GEORGIA

AL-26 (FAA)

25051

WAAS CH 40399 W10A	APP CRS 095°	Rwy Idg 9000 TDZE 1000 Apt Elev 1026
--	------------------------	---

RNAV (GPS) Y RWY 10

HARTSFIELD/JACKSON ATLANTA INTL (ATL)

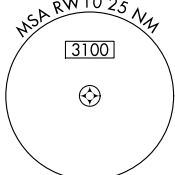
▼ For uncompensated Baro-VNAV systems, LNAV/VNAV NA below -7°C (20°F) or above 54°C (130°F). DME/DME-0.3 RNP NA. For inop ALSF-2, increase LNAV/VNAV all Cats visibility to 1½ mile and LNAV Cats C and D visibility to 1¾ mile. LNAV procedure NA during simultaneous operations. Simultaneous approach authorized with Rwy 8L or 8R or 9L, or Rwy 8L and 9L. Use of FD or AP providing RNAV track guidance required during simultaneous operations.



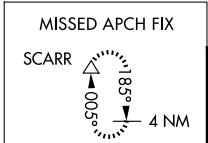
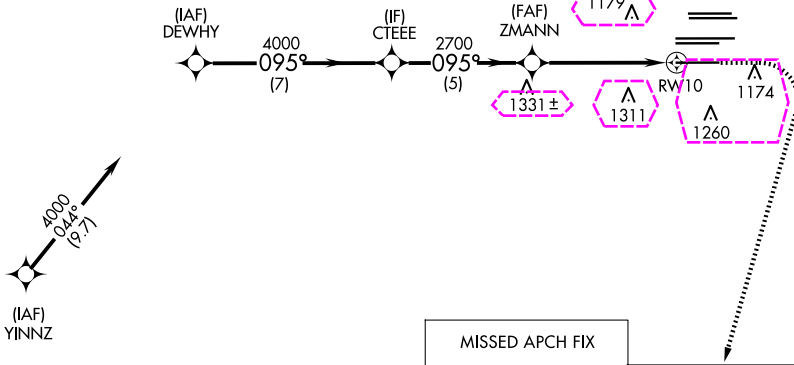
MISSED APPROACH: Climb to 1500 then climbing right turn to 3000 direct SCARR and hold.

D-ATIS ARR 119.65 DEP 125.55	ATLANTA APP CON 127.9 379.9	ATLANTA TOWER 8L-26R 8R-26L 9L-27R 9R-27L 10-28 RWYS 119.1 125.325 123.85 119.3 119.5 254.4	ALL RWYS 121.75 121.65 254.4	GND CON 8L-26R,8R-26L 9L-27R,9R-27L 10-28 RWYS 121.75 121.65 254.4	ALL RWYS
--	--	--	---	---	-------------

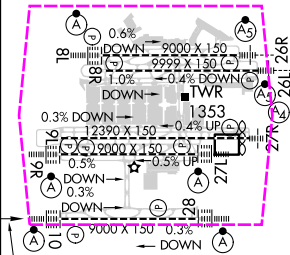
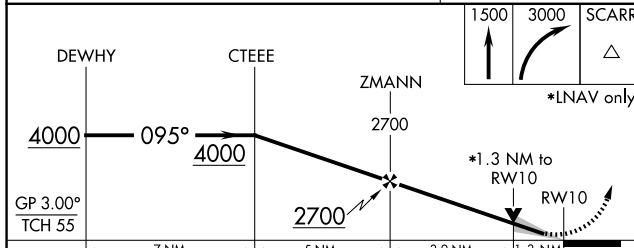
RADAR REQUIRED



CLNC DEL 118.1	CPDLC
-----------------------------	-------



ELEV 1026	TDZE 1000
-----------	-----------



CATEGORY	A	B	C	D
LPV DA		1200/18	200 (200-½)	
LNAV/VNAV DA		1455/55	455 (500-1)	
LNAV MDA	1480/24	480 (500-½)	1480/50	480 (500-1)

ATLANTA, GEORGIA
Amdt 4A 12OCT17

HARTSFIELD/JACKSON ATLANTA INTL (ATL)
33°38'N-84°26'W
RNAV (GPS) Y RWY 10

HIRL all Rwy's
TDZ/CL Rwy's 8L, 9R, 10, 26R,
27L and 28

ATLANTA, GEORGIA

AL-26 (FAA)

25219

WAAS CH 40399 W10A	APP CRS 095°	Rwy Ldg TDZE 1000 Apt Elev 1026
--	------------------------	---

RNAV (GPS) Y RWY 10

HARTSFIELD/JACKSON ATLANTA INTL (ATL)

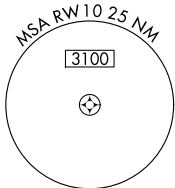
For uncompensated Baro-VNAV systems, LNAV/VNAV NA below -7°C (20°F) or above 54°C (130°F). DME/DME-0.3 RNP NA. For inop ALSF-2, increase LNAV/VNAV all Cats visibility to 1½ mile and LNAV Cats C and D visibility to 1¾ mile. LNAV procedure NA during simultaneous operations. Simultaneous approach authorized with Rwy 8L or 8R or 9L, or Rwys 8L and 9L. Use of FD or AP providing RNAV track guidance required during simultaneous operations.



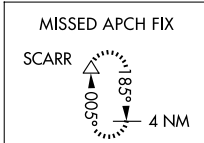
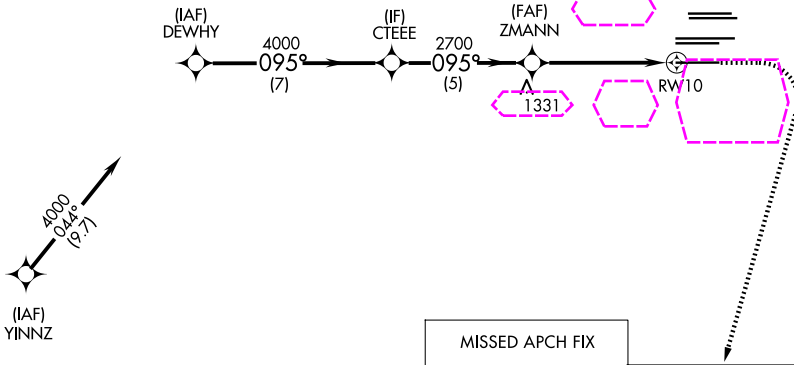
MISSED APPROACH: Climb to 1500 then climbing right turn to 3000 direct SCARR and hold.

D-ATIS	ATLANTA APP CON	ATLANTA TOWER						ALL RWYS	GND CON	ALL RWYS
ARR 119.65		8L-26R	8R-26L	9L-27R	9R-27L	10-28			(8L-26R,8R-26L)	(9L-27R,9R-27L)
DEP 125.55	127.9 379.9	119.1	125.325	123.85	119.3	119.5	254.4	121.9	121.75	121.65 254.4

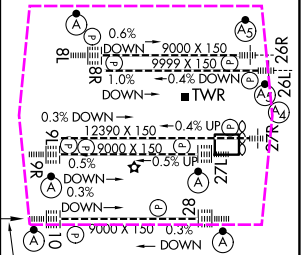
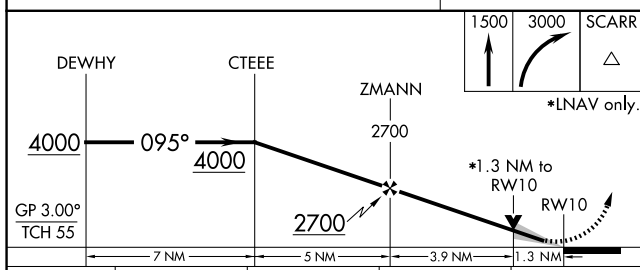
RADAR REQUIRED



CLNC DEL	CPDLC
118.1	



ELEV 1026	TDZE 1000
-----------	-----------



CATEGORY	A	B	C	D
LPV DA		1200/18	200 (200-½)	
LNAV/VNAV DA		1455/55	455 (500-1)	
LNAV MDA	1480/24	480 (500-½)	1480/50	480 (500-1)

HIRL all Rwys
TDZ/CL Rwys 8L, 9R, 10, 26R, 27L and 28

ATLANTA, GEORGIA
Amdt 4A 12OCT17

HARTSFIELD/JACKSON ATLANTA INTL (ATL)
33°38'N-84°26'W
RNAV (GPS) Y RWY 10

SE-4, 07 AUG 2025 to 04 SEP 2025

SE-4, 07 AUG 2025 to 04 SEP 2025