

SE-4, 10 JUL 2025 to 07 AUG 2025

ATLANTA, GEORGIA

AL-26 (FAA)

25219

APP CRS	Rwy Ldg	8800
095°	TDZE	1015
	Apt Elev	1026

RNAV (RNP) Z RWY 8L

HARTSFIELD/JACKSON ATLANTA INTL (ATL)

RNP AR APCH - GPS.

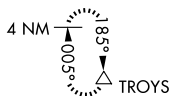
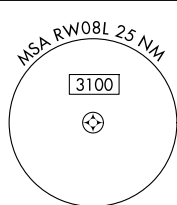
▼ For uncompensated Baro-VNAV systems, procedure NA below -5°C or above 54°C.
For inop ALS, increase RNP 0.15 all Cats RVR to 5500. Simultaneous approach authorized. Arrival from BOLND NA during simultaneous triple approaches.

ALSf-2

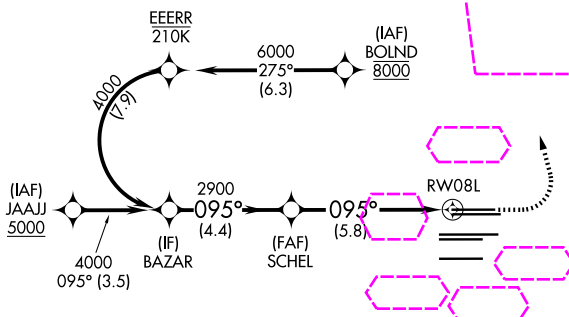


MISSED APPROACH: Climb to 1500 then dimbing left turn to 3500 direct TROYS and hold.

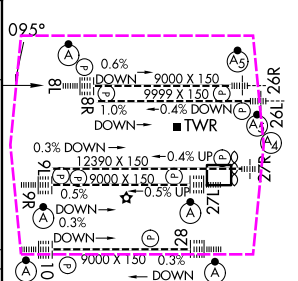
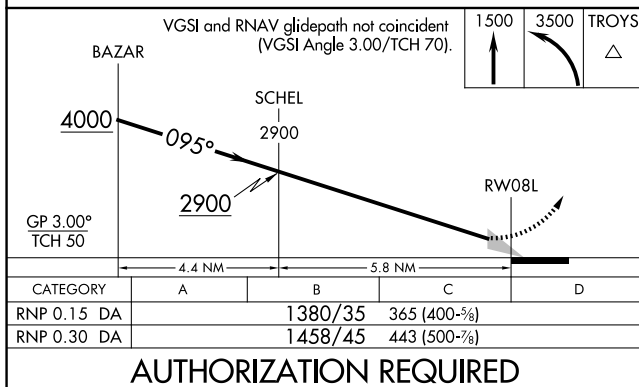
D-ATIS	ATLANTA	ATLANTA TOWER						ALL	GND CON	ALL
ARR 119.65	APP CON	8L-26R	8R-26L	9L-27R	9R-27L	10-28	RWYS	(8L-26R,8R-26L)	(9L-27R,9R-27L)	10-28
DEP 125.55	127.9 379.9	119.1	125.325	123.85	119.3	119.5	254.4	121.9	121.75	121.65 254.4



CLNC DEL	CPDLC
118.1	



ELEV 1026 D TDZE 1015



HIRL all Rwys
TDZ/CL Rwys 8L, 9R, 10, 26R,
27L and 28

ATLANTA, GEORGIA

Amdt 1A 23FEB23

HARTSFIELD/JACKSON ATLANTA INTL (ATL)

33°38'N-84°26'W

RNAV (RNP) Z RWY 8L

SE-4, 07 AUG 2025 to 04 SEP 2025

SE-4, 07 AUG 2025 to 04 SEP 2025