

ATLANTA, GEORGIA

AL-26 (FAA)

25051

APP CRS	Rwy Idg	9000
095°	TDZE	1000
	Apt Elev	1026

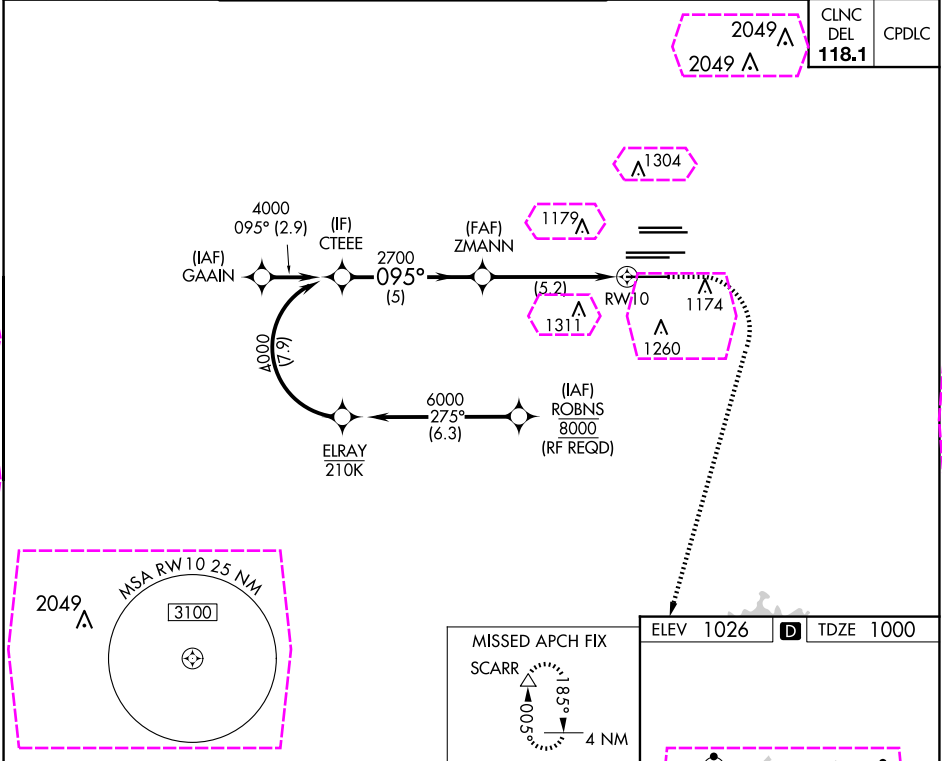
RNAV (RNP) Z RWY 10

HARTSFIELD/JACKSON ATLANTA INTL (ATL)

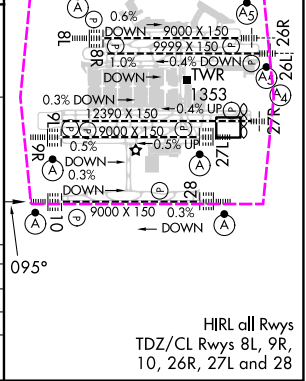
For uncompensated Baro-VNAV systems, procedure NA below -8°C (18°F) or above 54°C (130°F). GPS required. Simultaneous approach authorized; arrival from ROBNS NA. For inop ALS, increase RNP 0.11 DA all Cats visibility to RVR 4500.

ALS-F-2 MISSED APPROACH: Climb to 1500 then climbing right turn to 3000 direct SCARR and hold.

D-ATIS	ATLANTA	ATLANTA TOWER					ALL	GND CON				ALL
ARR 119.65	APP CON	8L-26R	8R-26L	9L-27R	9R-27L	10-28	RWYS	(8L-26R,8R-26L)	(9L-27R,9R-27L)	10-28	RWYS	
DEP 125.55	127.9 379.9	119.1	125.325	123.85	119.3	119.5	254.4	121.9	121.75	121.65	254.4	



<div><div><div>1500</div><div>↑</div></div><div><div>3000</div><div></div></div><div><div>SCARR</div><div></div></div></div>				
<div>GP 3.00° TCH 55</div> <div>CTEEE</div> <div>4000</div> <div>095°</div> <div>ZMANN</div> <div>2700</div> <div>2700</div> <div>5 NM</div> <div>5.2 NM</div> <div>RWY10</div>				
CATEGORY	A	B	C	D
RNP 0.11 DA	1290/24		290 (300-½)	
RNP 0.30 DA	1456/50		456 (500-1)	
AUTHORIZATION REQUIRED				



SE-4, 07 AUG 2025 to 04 SEP 2025