

ATLANTA, GEORGIA

AL-26 (FAA)

RNAV (GPS) PRM Y RWY 28
(SIMULTANEOUS CLOSE PARALLEL)
HARTSFIELD/JACKSON ATLANTA INTL (ATL)

25051

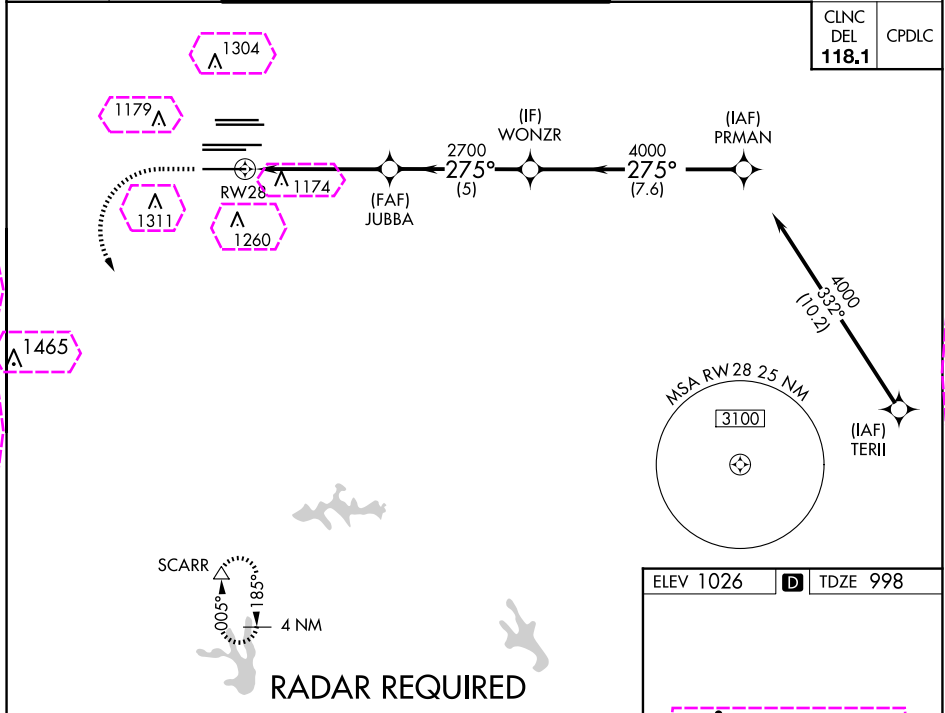
| | | |
|--|------------------------|--|
| WAAS CH 61299 W28A | APP CRS 275° | Rwy Idg 9000 TDZE 998 Apt Elev 1026 |
|--|------------------------|--|

For uncompensated Baro-VNAV systems, LNAV/VNAV NA below -7°C (20°F) or above 54°C (130°F). DME/DME RNP-0.3 NA. Simultaneous close parallel approach authorized with ILS PRM and RNAV PRM Rwy 26R or 26L or 27R or 27L, or Rwy 26R and 27R, or Rwy 26L and 27L, or Rwy 26L and 27R, or Rwy 26L and 27L. Use of FD or AP providing RNAV track guidance required during simultaneous operations. Dual VHF Comm required. See additional requirements on AAUP.

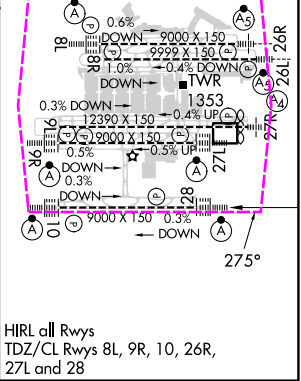
ALSF-2

MISSED APPROACH: Climb to 1500 then climbing left turn to 3000 direct SCARR and hold.

| | | | |
|--|---------------------------------------|--|--|
| D-ATIS ARR 119.65 DEP 125.55 | ATLANTA APP CON 127.9 379.9 | ATLANTA TOWER 8L-26R 8R-26L 9L-27R 9R-27L 10-28 RWYS 119.1 125.325 123.85 119.3 119.5 254.4 PRM 133.425 | ALL RWYS (8L-26R, 8R-26L) (9L-27R, 9R-27L) 10-28 RWYS 121.9 121.75 121.65 254.4 |
|--|---------------------------------------|--|--|



| | | |
|--------------------|---------|-------------|
| 1500 | 3000 | SCARR |
| ↑ | ↘ | △ |
| WONZR | | |
| PRMAN | | |
| JUBBA | 2700 | 4000 |
| RW28 | 2700 | 4000 |
| GP 3.00° TCH 57' | | |
| 5.2 NM 5 NM 7.6 NM | | |
| CATEGORY | A | B C D |
| LPV DA | 1198/18 | 200 (200-½) |
| LNAV/VNAV DA | 1250/24 | 252 (300-½) |



ATLANTA, GEORGIA

AL-26 (FAA)

RNAV (GPS) PRM Y RWY 28 (SIMULTANEOUS CLOSE PARALLEL) HARTSFIELD/JACKSON ATLANTA INTL (ATL)

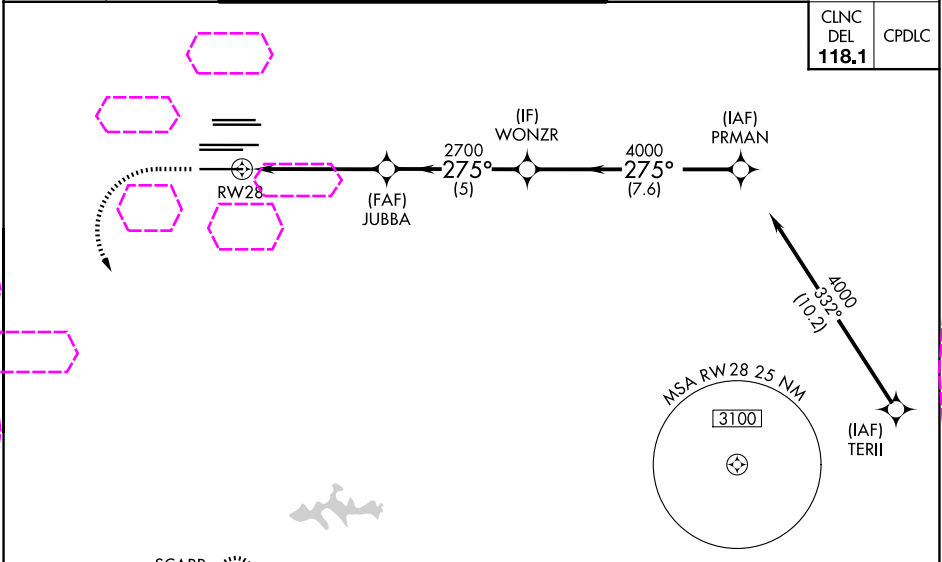
| | | |
|--|------------------------|--|
| WAAS CH 61299 W28A | APP CRS 275° | Rwy Ldg 9000 TDZE 998 Apt Elev 1026 |
|--|------------------------|--|

▼ For uncompensated Baro-VNAV systems, LNAV/VNAV NA below -7°C (20°F) or above 54°C (130°F). DME/DME RNP-0.3 NA. Simultaneous close parallel approach authorized with ILS PRM and RNAV PRM Rwy 26R or 26L or 27R or 27L, or Rwy 26R and 27R, or Rwy 26R and 27L, or Rwy 26L and 27R, or Rwy 26L and 27L. Use of FD or AP providing RNAV track guidance required during simultaneous operations. Dual VHF Comm required. See additional requirements on AAUP.

ALSF-2

MISSED APPROACH: Climb to 1500 then climbing left turn to 3000 direct SCARR and hold.

| | | | |
|--|--|--|---|
| D-ATIS ARR 119.65 DEP 125.55 | ATLANTA APP CON 127.9 379.9 | ATLANTA TOWER 8L-26R 8R-26L 9L-27R 9R-27L 10-28 RWYS 119.1 125.325 123.85 119.3 119.5 254.4 PRM 133.425 | ALL RWYS 121.9 121.75 121.65 254.4 |
|--|--|--|---|



SE-4, 07 AUG 2025 to 04 SEP 2025

SE-4, 07 AUG 2025 to 04 SEP 2025

SCARR 185° 500' 4 NM

RADAR REQUIRED

| | | |
|------|------|-------|
| 1500 | 3000 | SCARR |
| ↑ | ↙ | △ |

WONZR PRMAN
JUBBA
RW28
2700 4000 275°
GP 3.00° TCH 57'

| | | | | |
|--------------|---------|---|-------------|---|
| CATEGORY | A | B | C | D |
| LPV DA | 1198/18 | | 200 (200-½) | |
| LNAV/VNAV DA | 1250/24 | | 252 (300-½) | |

ELEV 1026 TDZE 998

0.6% DOWN - 9000 X 1.50
0.5% DOWN - 8000 X 1.50
1.0% DOWN - 7000 X 1.50
0.3% DOWN - 6000 X 1.50
0.5% DOWN - 5000 X 1.50
0.3% DOWN - 4000 X 1.50
0.3% UP - 3000 X 1.50
0.3% DOWN - 2000 X 1.50
0.3% DOWN - 1000 X 1.50
0.3% DOWN - 0 X 1.50

HIRL all Rwy
TDZ/CL Rwy 8L, 9R, 10, 26R,
27L and 28