

ATLANTA, GEORGIA

AL-26 (FAA)

RNAV (GPS) PRM RWY 9R
(SIMULTANEOUS CLOSE PARALLEL)
HARTSFIELD/JACKSON ATLANTA INTL (ATL)

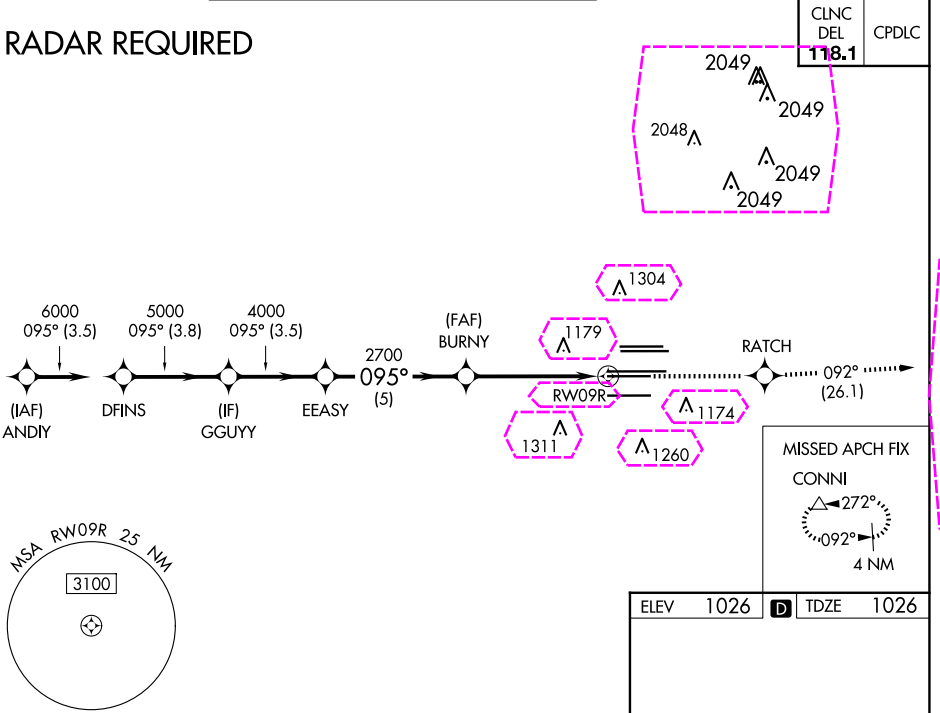
25051

WAAS CH 97400 W09B	APP CRS 095°	Rwy ldg TDZE 1026 Apt Elev 1026
--	------------------------	---

NA	For uncompensated Baro-VNAV systems, LNAV/VNAV NA below -7°C (20°F) or above 54°C (130°F). DME/DME RNP-0.3 NA. Simultaneous close parallel approach authorized with ILS PRM and RNAV PRM Rwy 8L or 8R or 10, or Rwy 8L and 10, or Rwy 8R and 10. Dual VHF comm required. See additional requirements on AAUP. Use of FD or AP providing RNAV track guidance required during simultaneous operations.	ALSIF-2 	MISSED APPROACH: Climb to 4000 direct RATCH and on track 092° to CONNI and hold.
-----------	--	-------------	---

D-ATIS ARR 119.65 DEP 125.55	ATLANTA APP CON 127.9 379.9	ATLANTA TOWER 8L-26R 8R-26L 9L-27R 9R-27L 10-28 RWYS 119.1 125.325 123.85 119.3 119.5 254.4 PRM 132.55	ALL RWYS 121.9 121.75 121.65 254.4
--	--	---	---

RADAR REQUIRED



SE-4, 10 JUL 2025 to 07 AUG 2025

SE-4, 10 JUL 2025 to 07 AUG 2025

VGSI and RNAV glidepath not coincident (VGSI Angle 3.00/TCH 70).		4000	RATCH	tr 092°	CONNI
CATEGORY	A	B	C	D	
LPV DA	1226/18		200 (200-½)		
LNAV/VNAV DA	1403/40		377 (400-¾)		

0.6% DOWN → 9000 X 1.50

0.3% DOWN → 2250 X 1.50

0.5% DOWN → 2250 X 1.50

0.3% DOWN → 2250 X 1.50

0.4% DOWN → 2250 X 1.50

0.5% UP → 2250 X 1.50

0.4% UP → 2250 X 1.50

0.3% DOWN → 2250 X 1.50

0.3% DOWN → 2250 X 1.50

0.3% DOWN → 2250 X 1.50

0.3% DOWN → 2250 X 1.50

0.3% DOWN → 2250 X 1.50

0.3% DOWN → 2250 X 1.50

0.3% DOWN → 2250 X 1.50

0.3% DOWN → 2250 X 1.50

0.3% DOWN → 2250 X 1.50

0.3% DOWN → 2250 X 1.50

0.3% DOWN → 2250 X 1.50

0.3% DOWN → 2250 X 1.50

0.3% DOWN → 2250 X 1.50

0.3% DOWN → 2250 X 1.50

0.3% DOWN → 2250 X 1.50

0.3% DOWN → 2250 X 1.50

0.3% DOWN → 2250 X 1.50

0.3% DOWN → 2250 X 1.50

0.3% DOWN → 2250 X 1.50

0.3% DOWN → 2250 X 1.50

0.3% DOWN → 2250 X 1.50

0.3% DOWN → 2250 X 1.50

0.3% DOWN → 2250 X 1.50

0.3% DOWN → 2250 X 1.50

0.3% DOWN → 2250 X 1.50

0.3% DOWN → 2250 X 1.50

0.3% DOWN → 2250 X 1.50

0.3% DOWN → 2250 X 1.50

0.3% DOWN → 2250 X 1.50

0.3% DOWN → 2250 X 1.50

0.3% DOWN → 2250 X 1.50

0.3% DOWN → 2250 X 1.50

0.3% DOWN → 2250 X 1.50

0.3% DOWN → 2250 X 1.50

0.3% DOWN → 2250 X 1.50

0.3% DOWN → 2250 X 1.50

0.3% DOWN → 2250 X 1.50

0.3% DOWN → 2250 X 1.50

0.3% DOWN → 2250 X 1.50

0.3% DOWN → 2250 X 1.50

0.3% DOWN → 2250 X 1.50

0.3% DOWN → 2250 X 1.50

0.3% DOWN → 2250 X 1.50

0.3% DOWN → 2250 X 1.50

0.3% DOWN → 2250 X 1.50

0.3% DOWN → 2250 X 1.50

0.3% DOWN → 2250 X 1.50

0.3% DOWN → 2250 X 1.50

0.3% DOWN → 2250 X 1.50

0.3% DOWN → 2250 X 1.50

0.3% DOWN → 2250 X 1.50

0.3% DOWN → 2250 X 1.50

0.3% DOWN → 2250 X 1.50

0.3% DOWN → 2250 X 1.50

0.3% DOWN → 2250 X 1.50

0.3% DOWN → 2250 X 1.50

0.3% DOWN → 2250 X 1.50

0.3% DOWN → 2250 X 1.50

0.3% DOWN → 2250 X 1.50

0.3% DOWN → 2250 X 1.50

0.3% DOWN → 2250 X 1.50

0.3% DOWN → 2250 X 1.50

0.3% DOWN → 2250 X 1.50

0.3% DOWN → 2250 X 1.50

0.3% DOWN → 2250 X 1.50

0.3% DOWN → 2250 X 1.50

0.3% DOWN → 2250 X 1.50

0.3% DOWN → 2250 X 1.50

0.3% DOWN → 2250 X 1.50

0.3% DOWN → 2250 X 1.50

0.3% DOWN → 2250 X 1.50

0.3% DOWN → 2250 X 1.50

0.3% DOWN → 2250 X 1.50

0.3% DOWN → 2250 X 1.50

0.3% DOWN → 2250 X 1.50

0.3% DOWN → 2250 X 1.50

0.3% DOWN → 2250 X 1.50

0.3% DOWN → 2250 X 1.50

0.3% DOWN → 2250 X 1.50

0.3% DOWN → 2250 X 1.50

0.3% DOWN → 2250 X 1.50

0.3% DOWN → 2250 X 1.50

0.3% DOWN → 2250 X 1.50

0.3% DOWN → 2250 X 1.50

0.3% DOWN → 2250 X 1.50

0.3% DOWN → 2250 X 1.50

0.3% DOWN → 2250 X 1.50

0.3% DOWN → 2250 X 1.50

0.3% DOWN → 2250 X 1.50

0.3% DOWN → 2250 X 1.50

0.3% DOWN → 2250 X 1.50

0.3% DOWN → 2250 X 1.50

0.3% DOWN → 2250 X 1.50

0.3% DOWN → 2250 X 1.50

0.3% DOWN → 2250 X 1.50

0.3% DOWN → 2250 X 1.50

0.3% DOWN → 2250 X 1.50

0.3% DOWN → 2250 X 1.50

0.3% DOWN → 2250 X 1.50

0.3% DOWN → 2250 X 1.50

0.3% DOWN → 2250 X 1.50

0.3% DOWN → 2250 X 1.50

0.3% DOWN → 2250 X 1.50

0.3% DOWN → 2250 X 1.50

0.3% DOWN → 2250 X 1.50

0.3% DOWN → 2250 X 1.50

0.3% DOWN → 2250 X 1.50

0.3% DOWN → 2250 X 1.50

0.3% DOWN → 2250 X 1.50

0.3% DOWN → 2250 X 1.50

0.3% DOWN → 2250 X 1.50

0.3% DOWN → 2250 X 1.50

0.3% DOWN → 2250 X 1.50

0.3% DOWN → 2250 X 1.50

0.3% DOWN → 2250 X 1.50

0.3% DOWN → 2250 X 1.50

0.3% DOWN → 2250 X 1.50

0.3% DOWN → 2250 X 1.50

0.3% DOWN → 2250 X 1.50

0.3% DOWN → 2250 X 1.50

0.3% DOWN → 2250 X 1.50

0.3% DOWN → 2250 X 1.50

0.3% DOWN → 2250 X 1.50

0.3% DOWN → 2250 X 1.50

0.3% DOWN → 2250 X 1.50

0.3% DOWN → 2250 X 1.50

0.3% DOWN → 2250 X 1.50

0.3% DOWN → 2250 X 1.50

0.3% DOWN → 2250 X 1.50

0.3% DOWN → 2250 X 1.50

0.3% DOWN → 2250 X 1.50

0.3% DOWN → 2250 X 1.50

0.3% DOWN → 2250 X 1.50

0.3% DOWN → 2250 X 1.50

0.3% DOWN → 2250 X 1.50

0.3% DOWN → 2250 X 1.50

0.3% DOWN → 2250 X 1.50

0.3% DOWN → 2250 X 1.50

0.3% DOWN → 2250 X 1.50

0.3% DOWN → 2250 X 1.50

0.3% DOWN → 2250 X 1.50

0.3% DOWN → 2250 X 1.50

0.3% DOWN → 2250 X 1.50

0.3% DOWN → 2250 X 1.50

0.3% DOWN → 2250 X 1.50

0.3% DOWN → 2250 X 1.50

0.3% DOWN → 2250 X 1.50

0.3% DOWN → 2250 X 1.50

0.3% DOWN → 2250 X 1.50

0.3% DOWN → 2250 X 1.50

0.3% DOWN → 2250 X 1.50

0.3% DOWN → 2250 X 1.50

0.3% DOWN → 2250 X 1.50

0.3% DOWN → 2250 X 1.50

0.3% DOWN → 2250 X 1.50

0.3% DOWN → 2250 X 1.50

0.3% DOWN → 2250 X 1.50

0.3% DOWN → 2250 X 1.50

0.3% DOWN → 2250 X 1.50

0.3% DOWN → 2250 X 1.50

0.3% DOWN → 2250 X 1.50

0.3% DOWN → 2250 X 1.50

0.3% DOWN → 2250 X 1.50

0.3% DOWN → 2250 X 1.50

0.3% DOWN → 2250 X 1.50

0.3% DOWN → 2250 X 1.50

0.3% DOWN → 2250 X 1.50

0.3% DOWN → 2250 X 1.50

0.3% DOWN → 2250 X 1.50

0.3% DOWN → 2250 X 1.50

0.3% DOWN → 2250 X 1.50

0.3% DOWN → 2250 X 1.50

0.3% DOWN → 2250 X 1.50

0.3% DOWN → 2250 X 1.50

0.3% DOWN → 2250 X 1.50

0.3% DOWN → 2250 X 1.50

0.3% DOWN → 2250 X 1.50

0.3% DOWN → 2250 X 1.50

0.3% DOWN → 2250 X 1.50

0.3% DOWN → 2250 X 1.50

0.3% DOWN → 2250 X 1.50

0.3% DOWN → 2250 X 1.50

0.3% DOWN → 2250 X 1.50

0.3% DOWN → 2250 X 1.50

0.3% DOWN → 2250 X 1.50

0.3% DOWN → 2250 X 1.50

0.3% DOWN → 2250 X 1.50

0.3% DOWN → 2250 X 1.50

0.3% DOWN → 2250 X 1.50

0.3% DOWN → 2250 X 1.50

0.3% DOWN → 2250 X 1.50

0.3% DOWN → 2250 X 1.50

0.3% DOWN → 2250 X 1.50

0.3% DOWN → 2250 X 1.50

0.3% DOWN → 2250 X 1.50

0.3% DOWN → 2250 X 1.50

0.3% DOWN → 2250 X 1.50

0.3% DOWN → 2250 X 1.50

0.3% DOWN → 2250 X 1.50

0.3% DOWN → 2250 X 1.50

0.3% DOWN → 2250 X 1.50

0.3% DOWN → 2250 X 1.50

0.3% DOWN → 2250 X 1.50

0.3% DOWN → 2250 X 1.50

0.3% DOWN → 2250 X 1.50

0.3% DOWN → 2250 X 1.50

0.3% DOWN → 2250 X 1.50

0.3% DOWN → 2250 X 1.50

0.3% DOWN → 2250 X 1.50

0.3% DOWN → 2250 X 1.50

0.3% DOWN → 2250 X 1.50

0.3% DOWN → 2250 X 1.50

0.3% DOWN → 2250 X 1.50

0.3% DOWN → 2250 X 1.50

0.3% DOWN → 2250 X 1.50

0.3% DOWN → 2250 X 1.50

0.3% DOWN → 2250 X 1.50

0.3% DOWN → 2250 X 1.50

0.3% DOWN → 2250 X 1.50

0.3% DOWN → 2250 X 1.50

0.3% DOWN → 2250 X 1.50

0.3% DOWN → 2250 X 1.50

0.3% DOWN → 2250 X 1.50

0.3% DOWN → 2250 X 1.50

0.3% DOWN → 2250 X 1.50

0.3% DOWN → 2250 X 1.50

0.3% DOWN → 2250 X 1.50

0.3% DOWN → 2250 X 1.50

0.3% DOWN → 2250 X 1.50

0.3% DOWN → 2250 X 1.50

0.3% DOWN → 2250 X 1.50

0.3% DOWN → 2250 X 1.50

0.3% DOWN → 2250 X 1.50

0.3% DOWN → 2250 X 1.50

0.3% DOWN → 2250 X 1.50

0.3% DOWN → 2250 X 1.50

0.3% DOWN → 2250 X 1.50

0.3% DOWN → 2250 X 1.50

0.3% DOWN → 2250 X 1.50

0.3% DOWN → 2250 X 1.50

0.3% DOWN → 2250 X 1.50

0.3% DOWN → 2250 X 1.50

0.3% DOWN → 2250 X 1.50

0.3% DOWN → 2250 X 1.50

0.3% DOWN → 2250 X 1.50

0.3% DOWN → 2250 X 1.50

0.3% DOWN → 2250 X 1.50

0.3% DOWN → 2250 X 1.50

0.3% DOWN → 2250 X 1.50

0.3% DOWN → 2250 X 1.50

0.3% DOWN → 2250 X 1.50

0.3% DOWN → 2250 X 1.50

0.3% DOWN → 2250 X 1.50

0.3% DOWN → 2250 X 1.50

0.3% DOWN → 2250 X 1.50

0.3% DOWN → 2250 X 1.50

0.3% DOWN → 2250 X 1.50

0.3% DOWN → 2250 X 1.50

0.3% DOWN → 2250 X 1.50

0.3% DOWN → 2250 X 1.50

0.3% DOWN → 2250 X 1.50

0.3% DOWN → 2250 X 1.50

0.3% DOWN → 2250 X 1.50

0.3% DOWN → 2250 X 1.50

0.3% DOWN → 2250 X 1.50

0.3% DOWN → 2250 X 1.50

0.3% DOWN → 2250 X 1.50

0.3% DOWN → 2250 X 1.50

0.3% DOWN → 2250 X 1.50

0.3% DOWN → 2250 X 1.50

0.3% DOWN → 2250 X 1.50

0.3% DOWN → 2250 X 1.50

0.3% DOWN → 2250 X 1.50

0.3% DOWN → 2250 X 1.50

0.3% DOWN → 2250 X 1.50

0.3% DOWN → 2250 X 1.50

0.3% DOWN → 2250 X 1.50

0.3% DOWN → 2250 X 1.50

0.3% DOWN → 2250 X 1.50

0.3% DOWN → 2250 X 1.50

0.3% DOWN → 2250 X 1.50

0.3% DOWN → 2250 X 1.50

0.3% DOWN → 2250 X 1.50

0.3% DOWN → 2250 X 1.50

0.3% DOWN → 2250 X 1.50

0.3% DOWN → 2250 X 1.50

0.3% DOWN → 2250 X 1.50

0.3% DOWN → 2250 X 1.50

0.3% DOWN → 2250 X 1.50

0.3% DOWN → 2250 X 1.50

0.3% DOWN → 2250 X 1.50

0.3% DOWN → 2250 X 1.50

0.3% DOWN → 2250 X 1.50

0.3% DOWN → 2250 X 1.50

0.3% DOWN → 2250 X 1.50

0.3% DOWN → 2250 X 1.50

0.3% DOWN → 2250 X 1.50

0.3% DOWN → 2250 X 1.50

0.3% DOWN → 2250 X 1.50

0.3% DOWN → 2250 X 1.50

0.3% DOWN → 2250 X 1.50

0.3% DOWN → 2250 X 1.50

0.3% DOWN → 2250 X 1.50

0.3% DOWN → 2250 X 1.50

0.3% DOWN → 2250 X 1.50

0.3% DOWN → 2250 X 1.50

0.3% DOWN → 2250 X 1.50

0.3% DOWN → 2250 X 1.50

0.3% DOWN → 2250 X 1.50

0.3% DOWN → 2250 X 1.50

0.3% DOWN → 2250 X 1.50

0.3% DOWN → 2250 X 1.50

0.3% DOWN → 2250 X 1.50

0.3% DOWN → 2250 X 1.50

0.3% DOWN → 2250 X 1.50

0.3% DOWN → 2250 X 1.50

0.3% DOWN → 2250 X 1.50

0.3% DOWN → 2250 X 1.50

0.3% DOWN → 2250 X 1.50

0.3% DOWN → 2250 X 1.50

0.3% DOWN → 2250 X 1.50

0.3% DOWN → 2250 X 1.50

0.3% DOWN → 2250 X 1.50

0.3% DOWN → 2250 X 1.50

0.3% DOWN → 2250 X 1.50

0.3% DOWN → 2250 X 1.50

0.3% DOWN → 2250 X 1.50

0.3% DOWN → 2250 X 1.50

0.3% DOWN → 2250 X 1.50

0.3% DOWN → 2250 X 1.50

0.3% DOWN → 2250 X 1.50

0.3% DOWN → 2250 X 1.50

0.3% DOWN → 2250 X 1.50

0.3% DOWN → 2250 X 1.50

0.3% DOWN → 2250 X 1.50

0.3% DOWN → 2250 X 1.50

0.3% DOWN → 2250 X 1.50

0.3% DOWN → 2250 X 1.50

0.3% DOWN → 2250 X 1.50

0.3% DOWN → 2250 X 1.50

0.3% DOWN → 2250 X 1.50

0.3% DOWN → 2250 X 1.50

0.3% DOWN → 2250 X 1.50

0.3% DOWN → 2250 X 1.50

0.3% DOWN → 2250 X 1.50

0.3% DOWN → 2250 X 1.50

0.3% DOWN → 2250 X 1.50

0.3% DOWN → 2250 X 1.50

0.3% DOWN → 2250 X 1.50

0.3% DOWN → 2250 X 1.50

0.3% DOWN → 2250 X 1.50

0.3% DOWN → 2250 X 1.50

0.3% DOWN → 2250 X 1.50

0.3% DOWN → 2250 X 1.50

0.3% DOWN → 2250 X 1.50

0.3% DOWN → 2250 X 1.50

0.3% DOWN → 2250 X 1.50

0.3% DOWN → 2250 X 1.50

0.3% DOWN → 2250 X 1.50

0.3% DOWN → 2250 X 1.50

0.3% DOWN → 2250 X 1.50

0.3% DOWN → 2250 X 1.50

0.3% DOWN → 2250 X 1.50

0.3% DOWN → 2250 X 1.50

0.3% DOWN → 2250 X 1.50

0.3% DOWN → 2250 X 1.50

0.3% DOWN → 2250 X 1.50

0.3% DOWN → 2250 X 1.50

0.3% DOWN → 2250 X 1.50

0.3% DOWN → 2250 X 1.50

0.3% DOWN → 2250 X 1.50

0.3% DOWN → 2250 X 1.50

0.3% DOWN → 2250 X 1.50

0.3% DOWN → 2250 X 1.50

0.3% DOWN → 2250 X 1.50

0.3% DOWN → 2250 X 1.50

0.3% DOWN → 2250 X 1.50

0.3% DOWN → 2250 X 1.50

0.3% DOWN → 2250 X 1.50

0.3% DOWN → 2250 X 1.50

0.3% DOWN → 2250 X 1.50

0.3% DOWN → 2250 X 1.50

0.3% DOWN → 2250 X 1.50

0.3% DOWN → 2250 X 1.50

0.3% DOWN → 2250 X 1.50

0.3% DOWN → 2250 X 1.50

0.3% DOWN → 2250 X 1.50

0.3% DOWN → 2250 X 1.50

0.3% DOWN → 2250 X 1.50

0.3% DOWN → 2250 X 1.50

0.3% DOWN → 2250 X 1.50

0.3% DOWN → 2250 X 1.50

0.3% DOWN → 2250 X 1.50

0.3% DOWN → 2250 X 1.50

0.3% DOWN → 2250 X 1.50

0.3% DOWN → 2250 X 1.50

0.3% DOWN → 2250 X 1.50

0.3% DOWN → 2250 X 1.50

0.3% DOWN → 2250 X 1.50

0.3% DOWN → 2250 X 1.50

0.3% DOWN → 2250 X 1.50

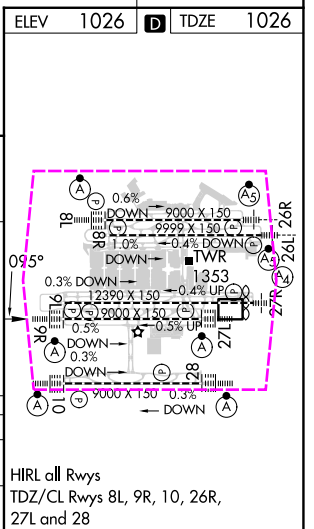
0.3% DOWN → 2250 X 1.50

0.3% DOWN → 2250 X 1.50

0.3% DOWN → 2250 X 1.50

0.3% DOWN → 2250 X 1.50

0.3% DOWN → 22



ATLANTA, GEORGIA
Orig-A 12OCT17

33°38'N-84°26'W

HARTSFIELD/JACKSON ATLANTA INTL (ATL)

RNAV (GPS) PRM RWY 9R (SIMULTANEOUS CLOSE PARALLEL)

ATLANTA, GEORGIA

AL-26 (FAA)

25219

RNAV (GPS) PRM RWY 9R

(SIMULTANEOUS CLOSE PARALLEL)

HARTSFIELD/JACKSON ATLANTA INTL (ATL)

WAAS CH 97400 W09B	APP CRS 095°	Rwy Ldg 9000 TDZE 1026 Apt Elev 1026
--	------------------------	---

NA For uncompensated Baro-VNAV systems, LNAV/VNAV NA below -7°C (20°F) or above 54°C (130°F). DME/DME RNP-0.3 NA. Simultaneous close parallel approach authorized with ILS PRM and RNAV PRM Rwy 8L or 8R or 10, or Rwy 8L and 10, or Rwy 8R and 10. Dual VHF comm required. See additional requirements on AAUP. Use of FD or AP providing RNAV track guidance required during simultaneous operations.

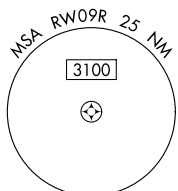
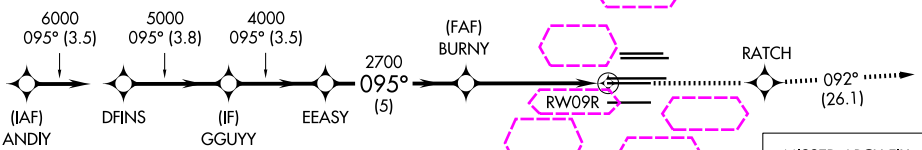


MISSED APPROACH:
Climb to 4000 direct RATCH and on track 092° to CONNI and hold.

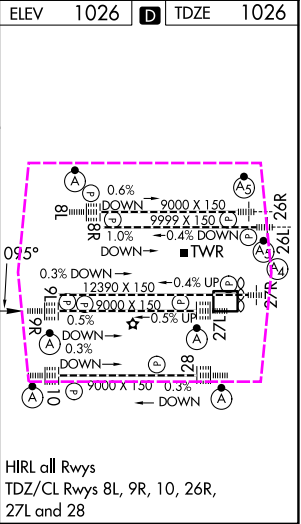
D-ATIS ARR 119.65 DEP 125.55	ATLANTA APP CON 127.9 379.9	ATLANTA TOWER 8L-26R 8R-26L 9L-27R 9R-27L 10-28 RWYS 119.1 125.325 123.85 119.3 119.5 254.4 PRM 132.55	ALL RWYS (8L-26R, 8R-26L) (9L-27R, 9R-27L) 10-28 RWYS 121.9 121.75 121.65 254.4
--	---------------------------------------	---	--

RADAR REQUIRED

CINC DEL 118.1	CPDLC
--------------------------	-------



VGSI and RNAV glidepath not coincident (VGSI Angle 3.00/TCH 70).				
ANDY	DFINS	GGUY	EEASY	BURNY
7000	6000	5000	4000	2700
GP 3.00° TCH 56				RW09R
3.5 NM	3.8 NM	3.5 NM	5 NM	5.1 NM
CATEGORY	A	B	C	D
LPV DA	1226/18 200 (200-½)			
LNAV/VNAV DA	1403/40 377 (400-¾)			



ATLANTA, GEORGIA
Orig-A 12OCT17

33°38'N-84°26'W

HARTSFIELD/JACKSON ATLANTA INTL (ATL)

RNAV (GPS) PRM RWY 9R (SIMULTANEOUS CLOSE PARALLEL)

SE-4, 07 AUG 2025 to 04 SEP 2025

SE-4, 07 AUG 2025 to 04 SEP 2025