

ATLANTA, GEORGIA

AL-26 (FAA)

RNAV (GPS) PRM RWY 27L
(SIMULTANEOUS CLOSE PARALLEL)
HARTSFIELD/JACKSON ATLANTA INTL (ATL)

25051

WAAS CH 65700 W27A	APP CRS 275°	Rwy Idg 8865 TDZE 999 Apt Elev 1026
--	------------------------	--

▼ For uncompensated Baro-VNAV systems, LNAV/VNAV NA below -7°C (20°F) or above 54°C (130°F). DME/DME RNP-0.3 NA. Simultaneous close parallel approach authorized with ILS PRM and RNAV PRM Rwy 26R or 26L or 28, or Rwy 26R and 28, or Rwy 26L and 28. Dual VHF Comm required. Use of FD or AP providing RNAV track guidance required during simultaneous operations. See additional requirements on AAUP.

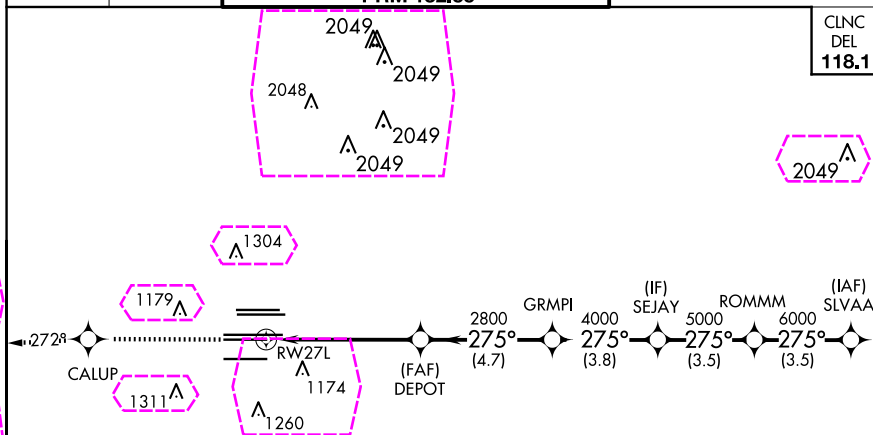
ALSF-2



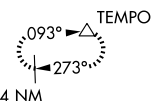
MISSED APPROACH: Climb to 4000 direct CALUP and on track 272° to TEMPO and hold.

D-ATIS	ATLANTA	ATLANTA TOWER					ALL				
ARR 119.65	APP CON	8L-26R	8R-26L	9L-27R	9R-27L	10-28	RWYS	(8L-26R,8R-26L)	(9L-27R,9R-27L)	10-28	RWYS
DEP 125.55	127.9 379.9	119.1	125.325	123.85	119.3	119.5	254.4	121.9	121.75	121.65	254.4
				PRM	132.55						

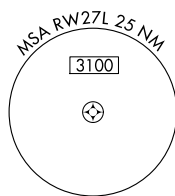
CLNC DEL 118.1	CPDLC
-----------------------------	-------



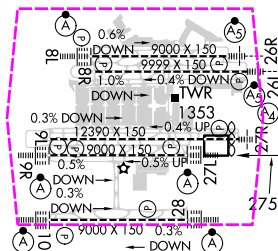
MISSED APCH FIX



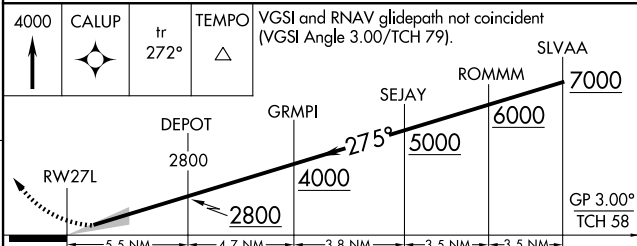
ELEV	1026	D	TDZE	999
------	------	----------	------	-----



RADAR REQUIRED



HIRL all Rwys
TDZ/CL Rwys 8L, 9R, 10, 26R,
27L and 28



CATEGORY		A	B	C	D
LPV	DA	1199/18 200 (200-½)			
LNAV/ VNAV	DA	1528-1⅜ 529 (600-1⅔)			

ATLANTA, GEORGIA
Orig-A 12OCT17

33°38'N-84°26'W

HARTSFIELD/JACKSON ATLANTA INTL (ATL)

RNAV (GPS) PRM RWY 27L (SIMULTANEOUS CLOSE PARALLEL)

SE-4, 10 JUL 2025 to 07 AUG 2025

SE-4, 10 JUL 2025 to 07 AUG 2025

SE-4, 07 AUG 2025 to 04 SEP 2025