

ATLANTA, GEORGIA

AL-26 (FAA)

25051

WAAS
CH **48800**
W08D

APP CRS
095°

Rwy Idg
TDZE **1024**
Apt Elev **1026**

RNAV (GPS) RWY 8R

HARTSFIELD/JACKSON ATLANTA INTL (ATL)

RNP APCH - GPS.
RADAR required.

▼ For uncompensated Baro-VNAV systems, LNAV/VNAV NA below -5°C or above 54°C. Simultaneous approach authorized with Rwy 9L or 9R or 10. LNAV procedure NA during simultaneous operations. Use of FD or AP providing RNAV track guidance required during simultaneous operations.

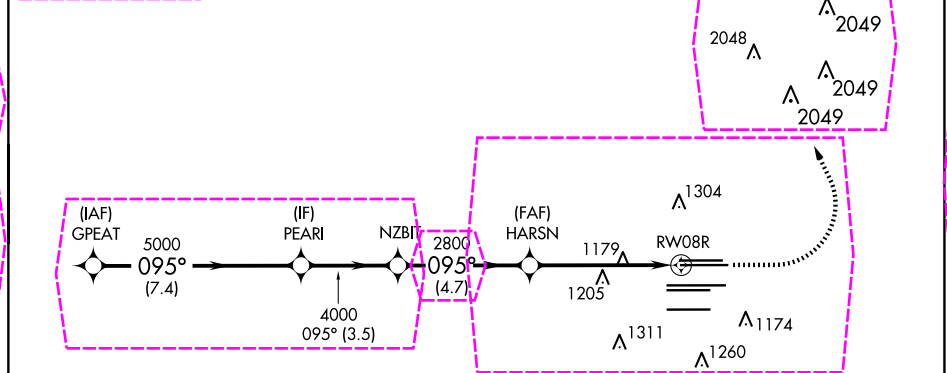
MISSED APPROACH:
Climb to 1500 then
climbing left turn to
3500 direct TROYS
and hold.

D-ATIS	ATLANTA APP CON	ATLANTA TOWER					ALL	GND CON			ALL
ARR 119.65		8L-26R	8R-26L	9L-27R	9R-27L	10-28	RWYS	(8L-26R, 8R-26L)	(9L-27R, 9R-27L)	10-28	RWYS
DEP 125.55	127.9 379.9	119.1	125.325	123.85	119.3	119.5	254.4	121.9	121.75	121.65	254.4

MSA RW08R 25 NM
3100

4 NM
185°
1005°
TROYS

CLNC DEL **118.1** CPDLC



ELEV 1026 TDZE 1024	
VGSI and RNAV glidepath not coincident (VGSI Angle 3.00/TCH 67).	
GPEAT	PEARL
5000	095°
5000	095°
4000	095° (3.5)
2800	095° (4.7)
2800	1.2 NM to RW08R
2800	1.2
7.4 NM	3.5 NM
4.7 NM	4.3 NM
1.2	
CATEGORY	A B C D
LPV DA	1282/40 258 (300-¾)
LNAV/VNAV DA	1440/60 416 (500-1¼)
LNAV MDA	1460/55 436 (500-1) 1460-1¼ 436 (500-1¼)

ATLANTA, GEORGIA
Amdt 5 31OCT24

33°38'N 84°26'W

HARTSFIELD/JACKSON ATLANTA INTL (ATL)
RNAV (GPS) RWY 8R

25219

WAAS CH 48800 W08D	APP CRS 095°	Rwy Ldg 9999 TDZE 1024 Apt Elev 1026
--	------------------------	---

RNAV (GPS) RWY 8R
HARTSFIELD/JACKSON ATLANTA INTL (ATL)

RNP APCH - GPS.

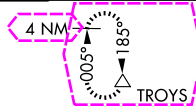
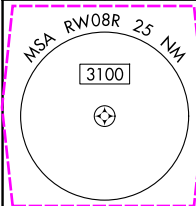
RADAR required.

T For uncompensated Baro-VNAV systems, LNAV/VNAV NA below -5°C or above 54°C. Simultaneous approach authorized with Rwy 9L or 9R or 10. LNAV procedure NA during simultaneous operations. Use of FD or AP providing RNAV track guidance required during simultaneous operations.

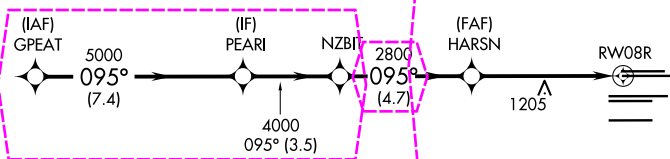
MISSED APPROACH:

Climb to 1500 then climbing left turn to 3500 direct TROYS and hold.

D-ATIS		ATLANTA TOWER							GND CON				
ARR	ATLANTA APP CON	8L-26R	8R-26L	9L-27R	9R-27L	10-28	ALL RWYS	(8L-26R,8R-26L)	(9L-27R,9R-27L)	10-28	ALL RWYS		
DEP	119.65	127.9	379.9	119.1	125.325	123.85	119.3	119.5	254.4	121.9	121.75	121.65	254.4

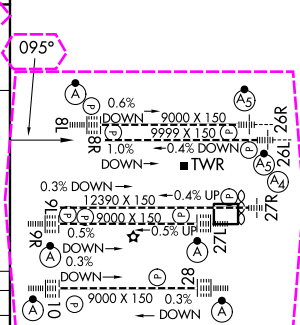
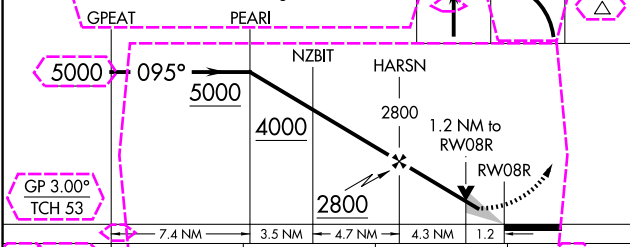
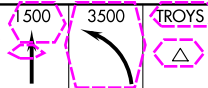


CLNC DEL 118.1	CPDLC
-----------------------------	-------



ELEV	1026	D	TDZE	1024
------	------	----------	------	------

VGSI and RNAV glidepath not coincident
(VGSI Angle 3.00/TCH 67).



CATEGORY	A	B	C	D
----------	---	---	---	---

LPV DA 1282/40 258 (300-3/4)

LNAV/ VNAV	DA	1440/60	416 (500-1¼)
---------------	----	---------	--------------

LNAV MDA	1460/55 436 (500-1)	1460-1¼ 436 (500-1¼)
----------	---------------------	-----------------------

HIRL all Rwy's
TDZ/CL Rwy's 8L, 9R,
10, 26R, 27L and 28

ATLANTA, GEORGIA
Amdt 5 31OCT24

33°38'N-84°26'W

HARTSFIELD/JACKSON ATLANTA INTL (ATL)
RNAV (GPS) RWY 8R

SE-4, 07 AUG 2025 to 04 SEP 2025