

ATLANTA, GEORGIA

AL-26 (FAA)

25051

WAAS CH 70400 W27B	APP CRS 275°	Rwy Idg 11890 TDZE 985 Apt Elev 1026
--------------------------	-----------------	--

# RNAV (GPS) RWY 27R

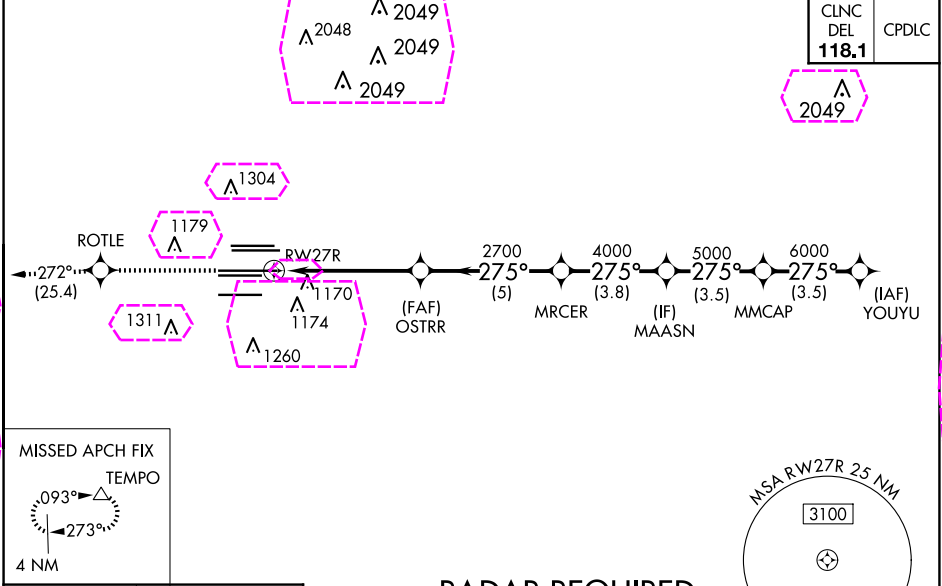
HARTSFIELD/JACKSON ATLANTA INTL (ATL)

▼ For uncompensated Baro-VNAV systems, LNAV/VNAV NA below -7°C (20°F) or above 54°C (130°F). Simultaneous approach authorized with Rwy 26R or 26L or 28, or Rwy 26R and 28. DME/DME RNP-0.3 NA. For inop MALS, increase LNAV/VNAV Cat D visibility and LNAV Cats C and D visibility ¼ mile. LNAV procedure NA during simultaneous operations. Use of FD or AP providing RNAV track guidance required during simultaneous operations. Inop table does not apply to LPV, all Cats.

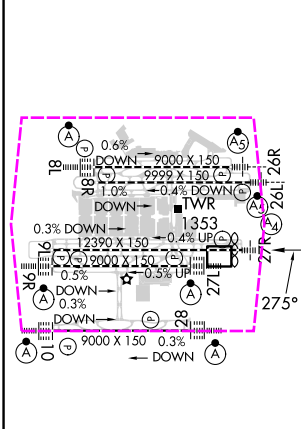
MALS

MISSED APPROACH:  
Climb to 4000 direct  
ROTLE and on track  
272° to TEMPO and  
hold.

D-ATIS ARR 119.65	ATLANTA APP CON	ATLANTA TOWER						ALL RWYS	GND CON	ALL RWYS
DEP 125.55	127.9 379.9	8L-26R	8R-26L	9L-27R	9R-27L	10-28	119.1 125.325 123.85 119.3 119.5 254.4	121.9	121.75	121.65 254.4



ELEV 1026	D	TDZE 985
-----------	---	----------



HIRL all Rwy  
TDZ/CL Rwy 8L, 9R,  
10, 26R, 27L and 28

4000	ROTLE	tr 272°	TEMPO	VGSI and RNAV glidepath not coincident (VGSI Angle 3.00/TCH 72).		YOUYU
*LNAV only.		*1.3 NM to RWY 27R		GP 3.00° TCH 56		
CATEGORY		A	B	C	D	
LPV DA		1185/40		200 (200-¾)		
LNAV/VNAV DA		1461-1⅓		476 (500-1⅓)		
LNAV MDA		1460/40		1460/60		475 (500-1¼)

ATLANTA, GEORGIA  
Amdt 4 18SEP14

HARTSFIELD/JACKSON ATLANTA INTL (ATL)  
33°38'N-84°26'W  
RNAV (GPS) RWY 27R

SE-4, 10 JUL 2025 to 07 AUG 2025

SE-4, 10 JUL 2025 to 07 AUG 2025

HARTSFIELD/JACKSON ATLANTA INTL (ATL)  
W RNAV (GPS) RWY 27R

SE-4, 07 AUG 2025 to 04 SEP 2025