

ATLANTA, GEORGIA

AL-26 (FAA)

25051

WAAS CH 65700 W27A	APP CRS 275°	Rwy Idg 8865 TDZE 999 Apt Elev 1026
--	------------------------	--

RNAV (GPS) RWY 27L

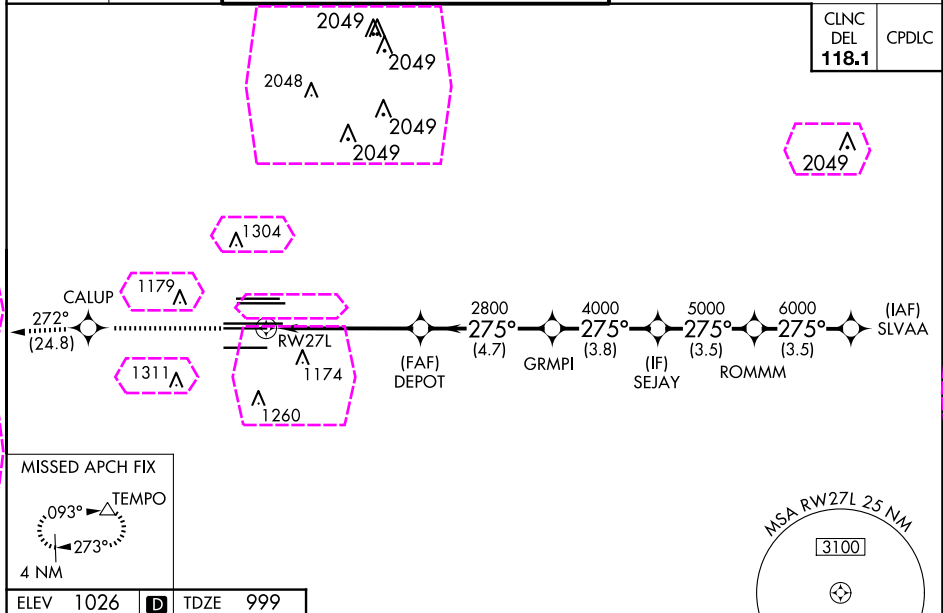
HARTSFIELD/JACKSON ATLANTA INTL (ATL)

For uncompensated Baro-VNAV systems, LNAV/VNAV NA below -7°C (20°F) or above 54°C (130°F). DME/DME RNP-0.3 NA. Simultaneous approach authorized with Rwy 26R or 26L. LNAV procedure NA during simultaneous operations. Use of FD or AP providing RNAV track guidance required during simultaneous operations.

ALSF-2

MISSED APPROACH: Climb to 4000 direct CALUP and on track 272° to TEMPO and hold.

D-ATIS ARR 119.65 DEP 125.55	ATLANTA APP CON 127.9 379.9	ATLANTA TOWER 8L-26R 8R-26L 9L-27R 9R-27L 10-28 RWYS 119.1 125.325 123.85 119.3 119.5 254.4					ALL RWYS 121.9	GND CON (8L-26R,8R-26L) (9L-27R,9R-27L) 10-28 RWYS 121.75 121.65 254.4	ALL RWYS
--	--	--	--	--	--	--	-----------------------------	---	-------------



RADAR REQUIRED

4000 CALUP tr 272° TEMPO

VGSI and RNAV glidepath not coincident (VGSI Angle 3.00/TCH 79).

SLVAA ROMMM SEJAY GRMPI DEPOT

*LNAV only.

*1.7 NM to RW27L 2800

RW27L 2800 4000 5000 6000 7000

GP 3.00° TCH 58

CATEGORY	A	B	C	D
LPV DA	1199/18 200 (200-½)			
LNAV/VNAV DA	1528-1¾ 529 (600-1¾)			
LNAV MDA	1620/24 621 (600-½)	1620-1¾ 621 (600-1¾)		

HIRL all Rwy's
TDZ/CL Rwy's 8L, 9R, 10, 26R, 27L and 28

ATLANTA, GEORGIA
Amdt 5A 12OCT17

HARTSFIELD/JACKSON ATLANTA INTL (ATL)
33°38'N-84°26'W
RNAV (GPS) RWY 27L

SE-4, 07 AUG 2025 to 04 SEP 2025