

ATLANTA, GEORGIA

AL-26 (FAA)

ILS PRM RWY 9R (CAT II & III)
(CLOSE PARALLEL)

25051

LOC/DME I-FUN 108.9 Chan 26	APP CRS 095°	Rwy Idg TDZE Apt Elev 9000 1026 1026
---	------------------------	--

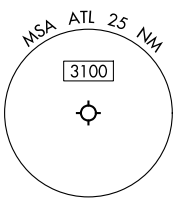
HARTSFIELD/JACKSON ATLANTA INTL (ATL)

RADAR required for procedure entry, DME.

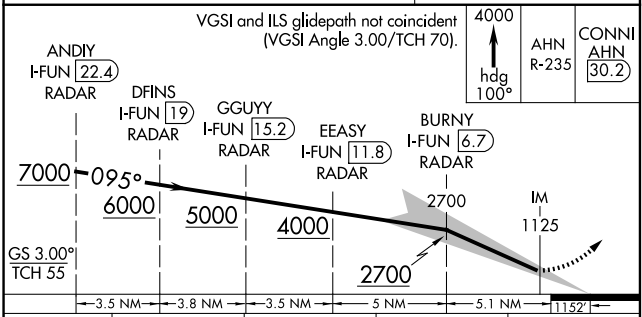
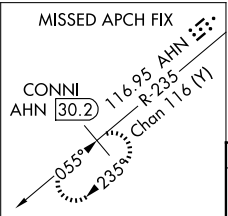
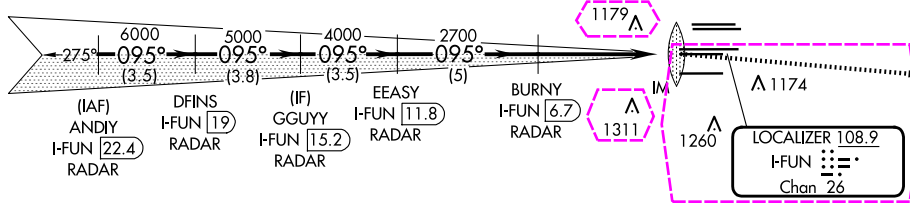
ALSIF-2

MISSED APPROACH: Climb to 4000 on heading 100° and AHN VOR/DME R-235 to CONNI/AHN 30.2 DME and hold.

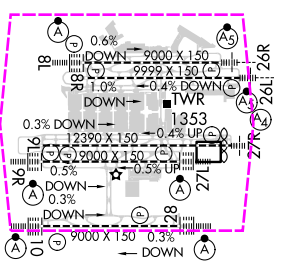
D-ATIS ARR 119.65 DEP 125.55	ATLANTA APP CON 127.9 379.9	ATLANTA TOWER 8L-26R 8R-26L 9L-27R 9R-27L 10-28 RWYS 119.1 125.325 123.85 119.3 119.5 254.4 PRM 132.55	ALL RWYS 121.9 121.75 121.65 254.4	GND CON (8L-26R,8R-26L) (9L-27R,9R-27L) 10-28 RWYS
--	--	---	---	---



CINC DEL 118.1	CPDLC
-----------------------------	-------



ELEV 1026	TDZE 1026
-----------	-----------



CATEGORY	A	B	C	D
S-ILS 9R	CAT II RA 118/12 100 DA 1126			
S-ILS 9R	CAT III RVR 03			

CATEGORY II & III ILS SPECIAL AIRCREW
& AIRCRAFT CERTIFICATION REQUIRED

HIRL all Rwws
TDZ/CL Rwws 8L, 9R, 10, 26R,
27L and 28

ATLANTA, GEORGIA
Amdt 3 22APR21

33°38'N-84°26'W HARTSFIELD/JACKSON ATLANTA INTL (ATL)
ILS PRM RWY 9R (CAT II & III) (CLOSE PARALLEL)

SE-4, 10 JUL 2025 to 07 AUG 2025

SE-4, 10 JUL 2025 to 07 AUG 2025

ATLANTA, GEORGIA

AL-26 (FAA)

ILS PRM RWY 9R (CAT II & III)
(CLOSE PARALLEL)

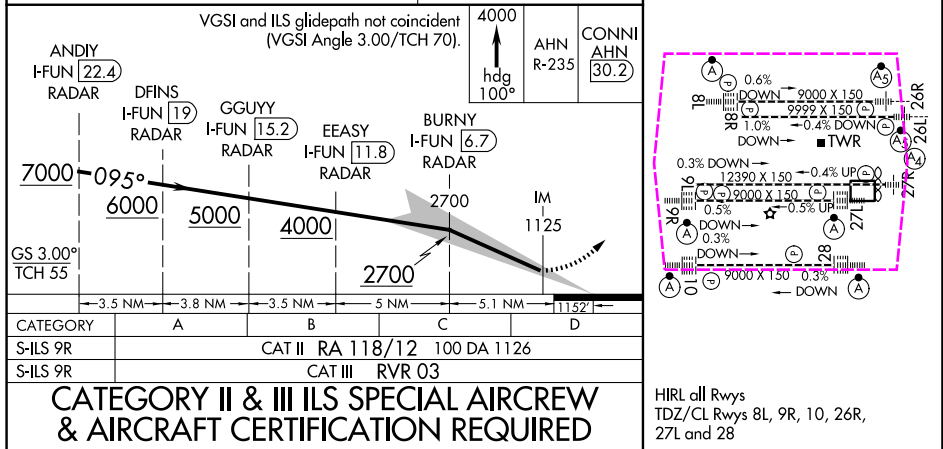
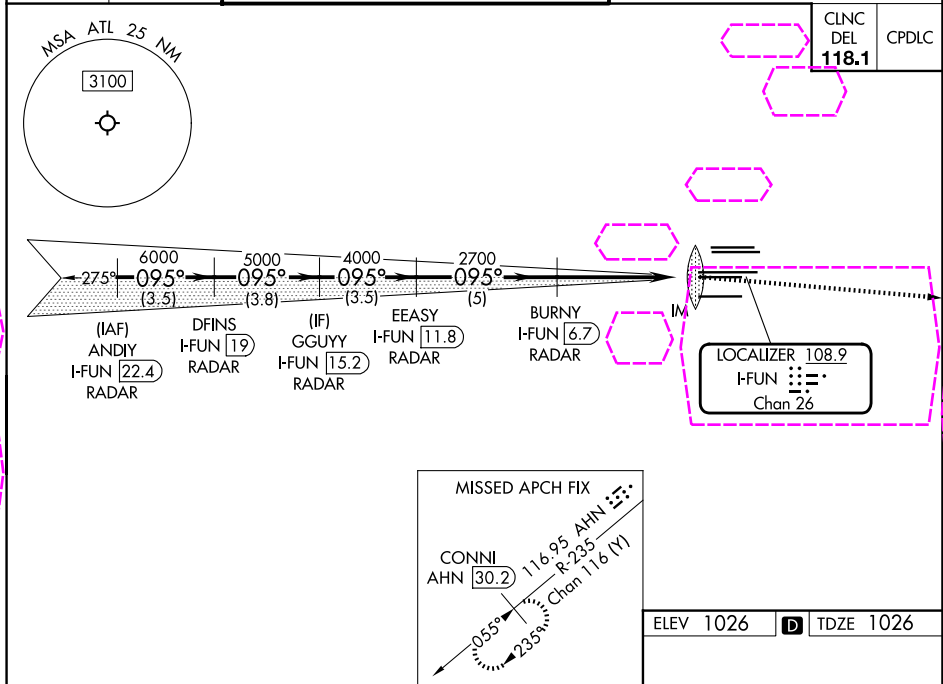
25219

LOC/DME I-FUN 108.9 Chan 26	APP CRS 095°	Rwy Ldg TDZE Apt Elev 9000 1026 1026
---	------------------------	--

HARTSFIELD/JACKSON ATLANTA INTL (ATL)

RADAR required for procedure entry, DME.			ALSIF-2 	MISSED APPROACH: Climb to 4000 on heading 100° and AHN VOR/DME R-235 to CONNI/AHN 30.2 DME and hold.
Simultaneous approach authorized. Use of FD or AP required during simultaneous operations. Dual VHF comm required. See additional requirements on AAUP.				

D-ATIS ARR 119.65 DEP 125.55	ATLANTA APP CON 127.9 379.9	ATLANTA TOWER 8L-26R 8R-26L 9L-27R 9R-27L 10-28 RWYS 119.1 125.325 123.85 119.3 119.5 254.4 PRM 132.55				ALL RWYS 254.4	GND CON (8L-26R,8R-26L) (9L-27R,9R-27L) 10-28 121.9 121.75 121.65 254.4	ALL RWYS
--	--	---	--	--	--	-----------------------------	--	-------------



ATLANTA, GEORGIA
Amdt 3 22APR21

33°38'N-84°26'W HARTSFIELD/JACKSON ATLANTA INTL (ATL)
ILS PRM RWY 9R (CAT II & III) (CLOSE PARALLEL)

SE-4, 07 AUG 2025 to 04 SEP 2025

SE-4, 07 AUG 2025 to 04 SEP 2025