

ATLANTA, GEORGIA

AL-26 (FAA)

25051

LOC/DME I-PKU	APP CRS	Rwy ldg	9000
111.75	275°	TDZE	998
Chan 54(Y)		Apt Elev	1026

ILS PRM RWY 28 (CLOSE PARALLEL)

HARTSFIELD/JACKSON ATLANTA INTL (ATL)

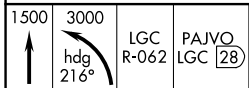
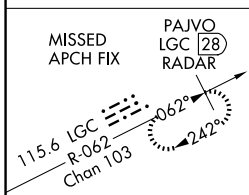
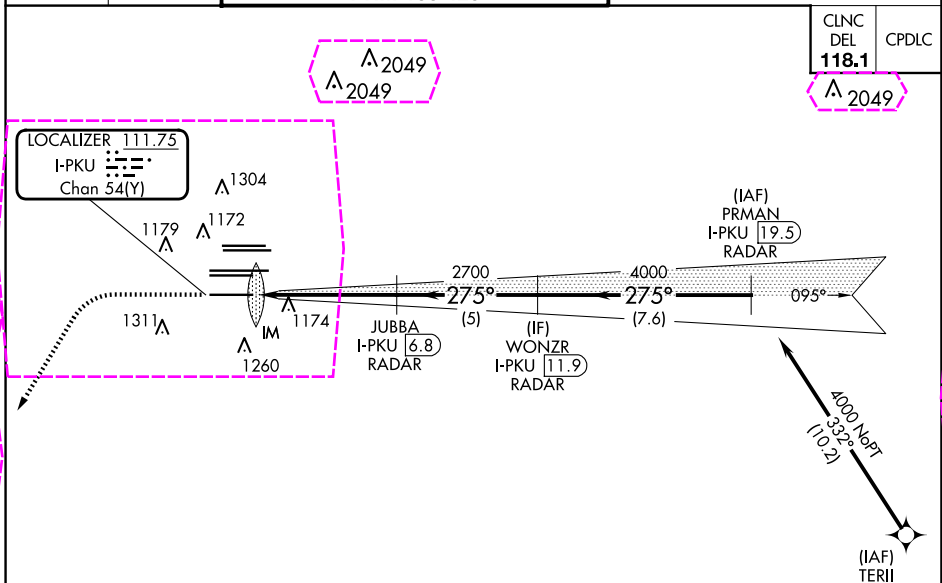
RNAV 1-GPS or RADAR required for procedure entry.
From TERII: RNAV 1-GPS required. DME or RADAR required.

Simultaneous approach authorized. Use of FD or AP required during simultaneous operations. Dual VHF comm required. See additional requirements on AAUP.

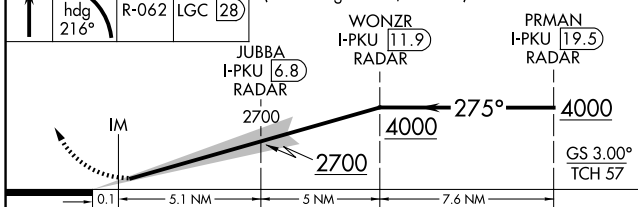
ALSIF-2

MISSED APPROACH: Climb to 1500 then climbing left turn to 3000 on heading 216° and LGC VORTAC R-062 to PAJVO/LGC 28 DME/RADAR and hold.

D-ATIS	ATLANTA	ATLANTA TOWER				ALL	GND CON				ALL
ARR 119.65	APP CON	8L-26R	8R-26L	9L-27R	9R-27L	10-28	RWYS	(8L-26R, 8R-26L)	(9L-27R, 9R-27L)	10-28	RWYS
DEP 125.55	127.9 379.9	119.1	125.325	123.85	119.3	119.5	254.4	121.9	121.75	121.65	254.4
		PRM 133.425									

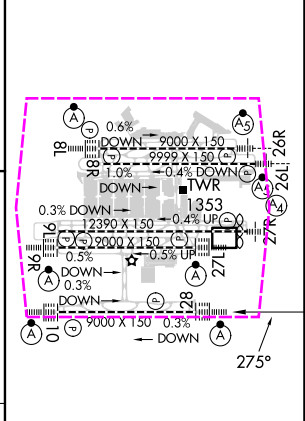


VGSI and ILS glidepath not coincident (VGSI Angle 3.00/TCH 72).



CATEGORY	A	B	C	D
S-ILS 28	1198/18	200 (200-1/2)		

ELEV 1026 TDZE 998



ATLANTA, GEORGIA
Amdt 5 07OCT21

33°38'N-84°26'W

HARTSFIELD/JACKSON ATLANTA INTL (ATL)

ILS PRM RWY 28 (CLOSE PARALLEL)

ATLANTA, GEORGIA

AL-26 (FAA)


25219

LOC/DME I-PKU 111.75 Chan 54 (Y)	APP CRS 275°	Rwy Ldg TDZE 998 Apt Elev 1026
--	------------------------	--

ILS PRM RWY 28 (CLOSE PARALLEL)

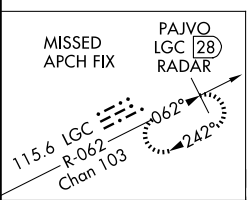
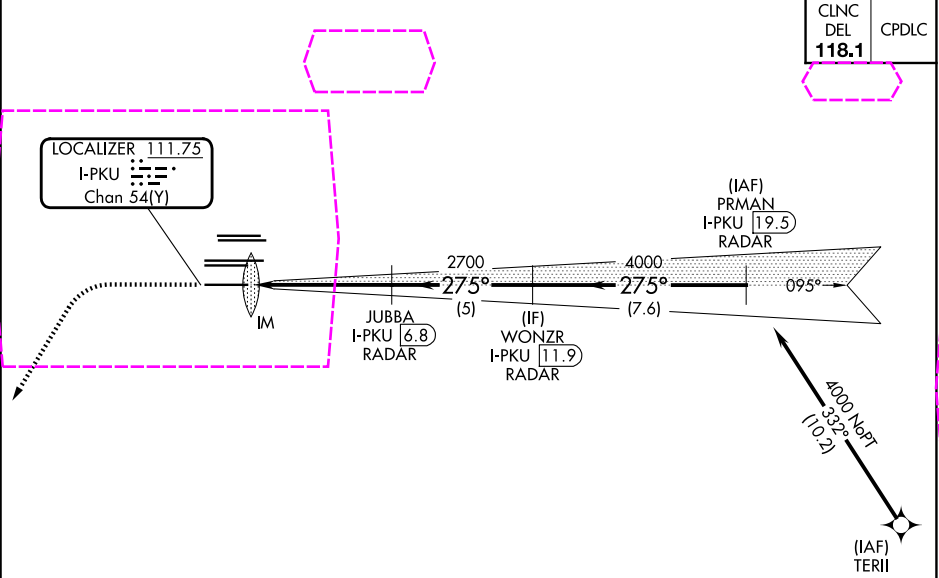
HARTSFIELD/JACKSON ATLANTA INTL (ATL)

RNAV 1-GPS or RADAR required for procedure entry.
From TERII: RNAV 1-GPS required. DME or RADAR required.

ALSIF-2

MISSED APPROACH: Climb to 1500 then climbing left turn to 3000 on heading 216° and LGC VORTAC R-062 to PAJVO/LGC 28 DME/RADAR and hold.

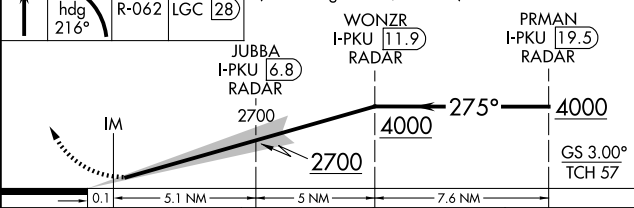
D-ATIS ARR 119.65 DEP 125.55	ATLANTA APP CON 127.9 379.9	ATLANTA TOWER 8L-26R 8R-26L 9L-27R 9R-27L 10-28 RWYS 119.1 125.325 123.85 119.3 119.5 254.4 PRM 133.425	ALL RWYS (8L-26R,8R-26L) (9L-27R,9R-27L) 10-28 121.9 121.75 121.65 254.4
--	--	--	--

CLNC DEL 118.1	CPDLC
-----------------------------	-------



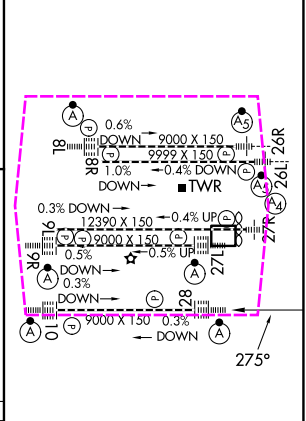
1500 ↑ hdg 216°	LGC R-062	PAJVO LGC 28
--------------------------	--------------	-----------------

VGSI and ILS glidepath not coincident
(VGSI Angle 3.00/TCH 72).



CATEGORY	A	B	C	D
S-ILS 28		1198/18	200 (200-1/2)	

ELEV 1026	D	TDZE 998
-----------	---	----------



HIRL all Rwy
TDZ/CL Rwy 8L, 9R,
10, 26R, 27L and 28

ATLANTA, GEORGIA
Amdt 5 07OCT21

33°38'N-84°26'W

HARTSFIELD/JACKSON ATLANTA INTL (ATL)

ILS PRM RWY 28 (CLOSE PARALLEL)

SE-4, 07 AUG 2025 to 04 SEP 2025

SE-4, 07 AUG 2025 to 04 SEP 2025